

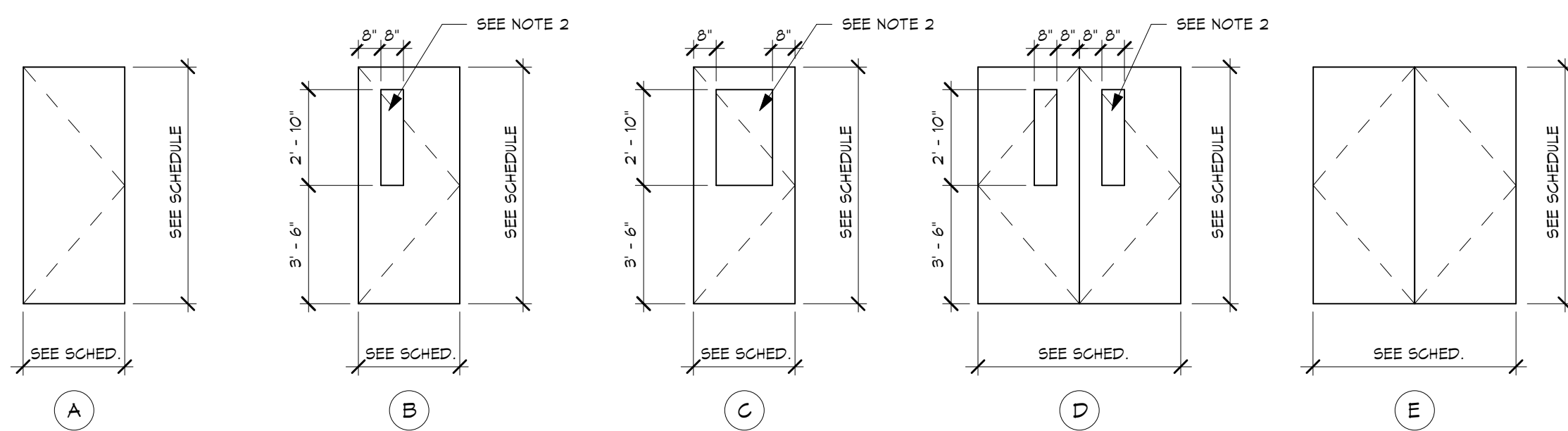
OPENING NUMBER	DOOR, FRAME, HARDWARE SCHEDULE												DOOR UNDERCUTS	REMARKS
	ELEV.	MNTL	DOOR			DOOR & FRAME		FRAME			HARDWARE SET NO.			
			NOMINAL SIZE	FIRE RATING	GLASS	ELEV.	MNTL	HEA	JAM	SIL				
FIRST FLOOR (ELEV. 100.00)														
1C-1	A	IND	3'-0"	T-0"	1 3/4"	45 MIN	A	HM	H1	J1	S1	CS09		2
1C-2	A	IND	3'-0"	T-0"	1 3/4"	45 MIN	A	HM	H5	J5	S5	CS09		
1C-2B	A	HM	3'-0"	T-0"	1 3/4"	45 MIN	A	HM	H6	J6	S1	CS02		
1B-1	A	HM	3'-0"	T-0"	1 3/4"	45 MIN	A	HM	H6	J6	S1	CS01		
1B-2	A	HM	3'-0"	T-0"	1 3/4"	45 MIN	A	HM	H7	J7	S1	CS02		
1001	A	IND	6'-0"	T-0"					H5	J5	S5	CS09		1
1002	A	IND	6'-0"	T-0"					H5	J5	S5	CS04		1
1003	A	IND	4'-0"	T-0"	1 3/4"	45 MIN	A	HM	H1	J1	S1	CS08		1
1004	A	IND	3'-0"	T-0"	1 3/4"	45 MIN	A	HM	H1	J1	S1	CS07		1
1005	A	IND	3'-0"	T-0"	1 3/4"	45 MIN	A	HM	H1	J1	S1	CS07.1		1
1006A	A	IND	4'-0"	T-0"	1 3/4"	45 MIN	A	HM	H1	J1	S1	CS08		1
1006B	A	IND	3'-0"	T-0"	1 3/4"	45 MIN	A	HM	H1	J1	S1	CS07.1		1
1007	A	IND	6'-0"	T-0"					H5	J5	S5	CS04		1
1007A	A	IND	3'-0"	T-0"	1 3/4"	45 MIN	A	HM	H1	J1	S1	CS08		1
1007B	A	IND	3'-0"	T-0"	1 3/4"	45 MIN	A	HM	H1	J1	S1	CS08		1
1008	A	IND	6'-0"	T-0"					H5	J5	S5	CS07.1		1
SECOND FLOOR (ELEV. 115.26)														
2C-1A	A	IND	3'-0"	T-0"	1 3/4"	45 MIN	A	HM	H1	J1	S1	CS09.1		
2C-1B	A	IND	3'-0"	T-0"	1 3/4"	45 MIN	A	HM	H1	J1	S1	CS09.1		
2C-2	A	IND	3'-0"	T-0"	1 3/4"	45 MIN	A	HM	H1	J1	S1	CS09.1		
2C-2A	A	GLASS	3'-0"	T-0"	1 3/4"	45 MIN	A	HM	H1	J1	S1	CS09.1		
2C-2B	A	IND	3'-0"	T-0"	1 3/4"	45 MIN	A	HM	H1	J1	S1	CS09		
2C-2C	A	IND	3'-0"	T-0"	1 3/4"	45 MIN	A	HM	H1	J1	S1	CS09.1		
2C-4A	A	IND	3'-0"	T-0"	1 3/4"	45 MIN	A	HM	H1	J1	S1	CS09.1		
2C-4B	A	IND	3'-0"	T-0"	1 3/4"	45 MIN	A	HM	H1	J1	S1	CS09.1		
2C-4C	A	IND	3'-0"	T-0"	1 3/4"	45 MIN	A	HM	H1	J1	S1	CS09.1		
2C-4D	A	IND	3'-0"	T-0"	1 3/4"	45 MIN	A	HM	H1	J1	S1	CS09.1		
2C-4E	A	IND	3'-0"	T-0"	1 3/4"	45 MIN	A	HM	H1	J1	S1	CS09.1		
2C-4F	A	IND	3'-0"	T-0"	1 3/4"	45 MIN	A	HM	H1	J1	S1	CS09.1		
2B-1	A	HM	3'-0"	T-0"	1 3/4"	45 MIN	A	HM	H6	J6	S1	CS011		
2B-2	A	HM	3'-0"	T-0"	1 3/4"	45 MIN	A	HM	H7	J7	S1	CS011		
2001	A	IND	3'-0"	T-0"	1 3/4"	45 MIN	A	HM	H1	J1	S1	CS07		
2002	A	IND	3'-0"	T-0"	1 3/4"	45 MIN	A	HM	H1	J1	S1	CS012		
2003	A	IND	3'-0"	T-0"	1 3/4"	45 MIN	A	HM	H1	J1	S1	CS01B		

DOOR, FRAME, HARDWARE, SCHEDULE NOTES

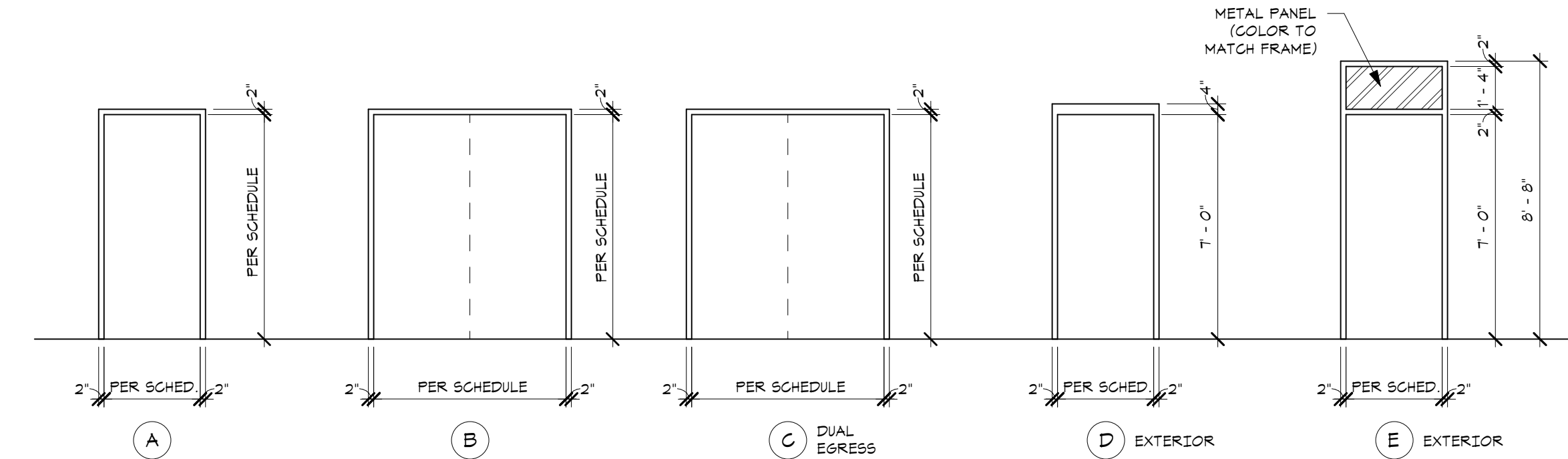
- PART OF STOREFRONT ASSEMBLY. SEE A4/A602 FOR MORE INFORMATION.
- PART OF INTERIOR WINDOW ASSEMBLY. SEE INTERIOR WINDOW SCHEDULE E1/A602 FOR MORE INFORMATION.

DOOR ABBREVIATIONS:

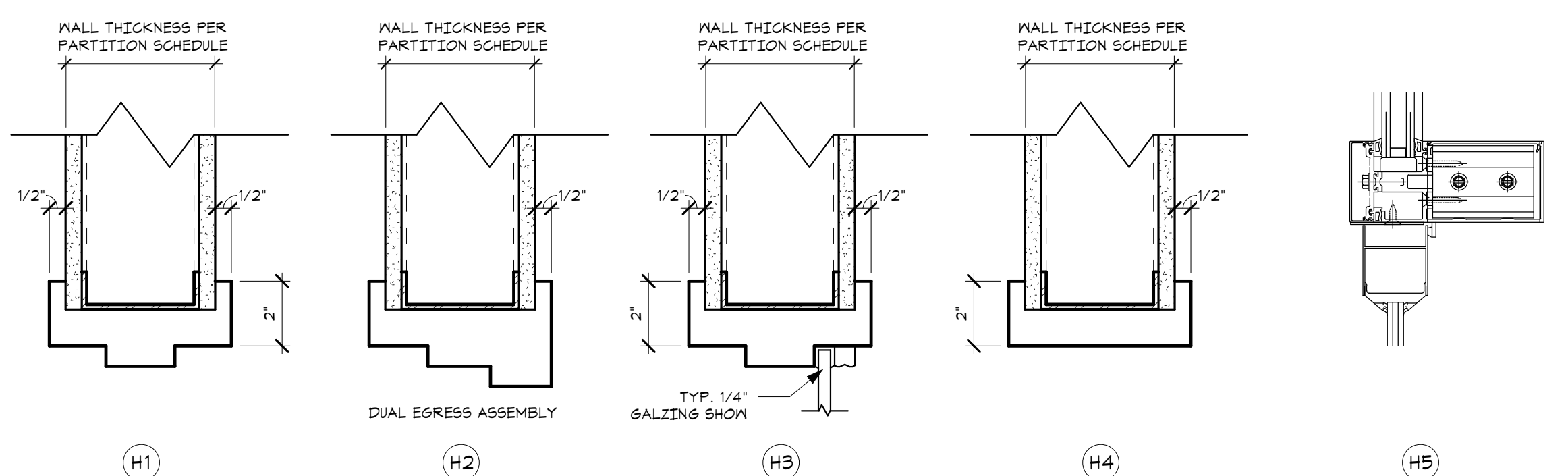
- AL - ALUMINUM
- GORR - CORRIDOR SEPARATION
- GA - GALVANIZED STEEL
- HM - HOLLOW METAL
- SB - SMOKE BARRIER ASSEMBLY
- ST - STEEL
- MD - MDO, OAK VENEER



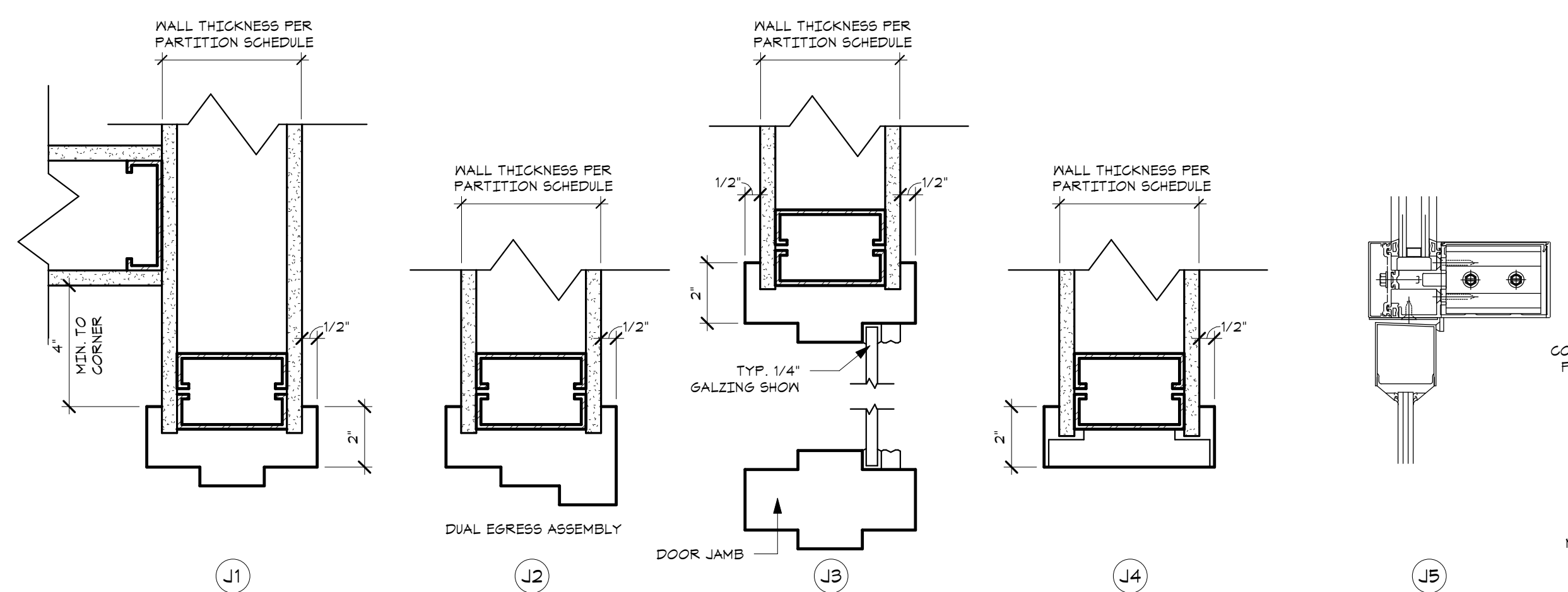
F3 DOOR ELEVATIONS
SCALE: 1/4" = 1'-0"



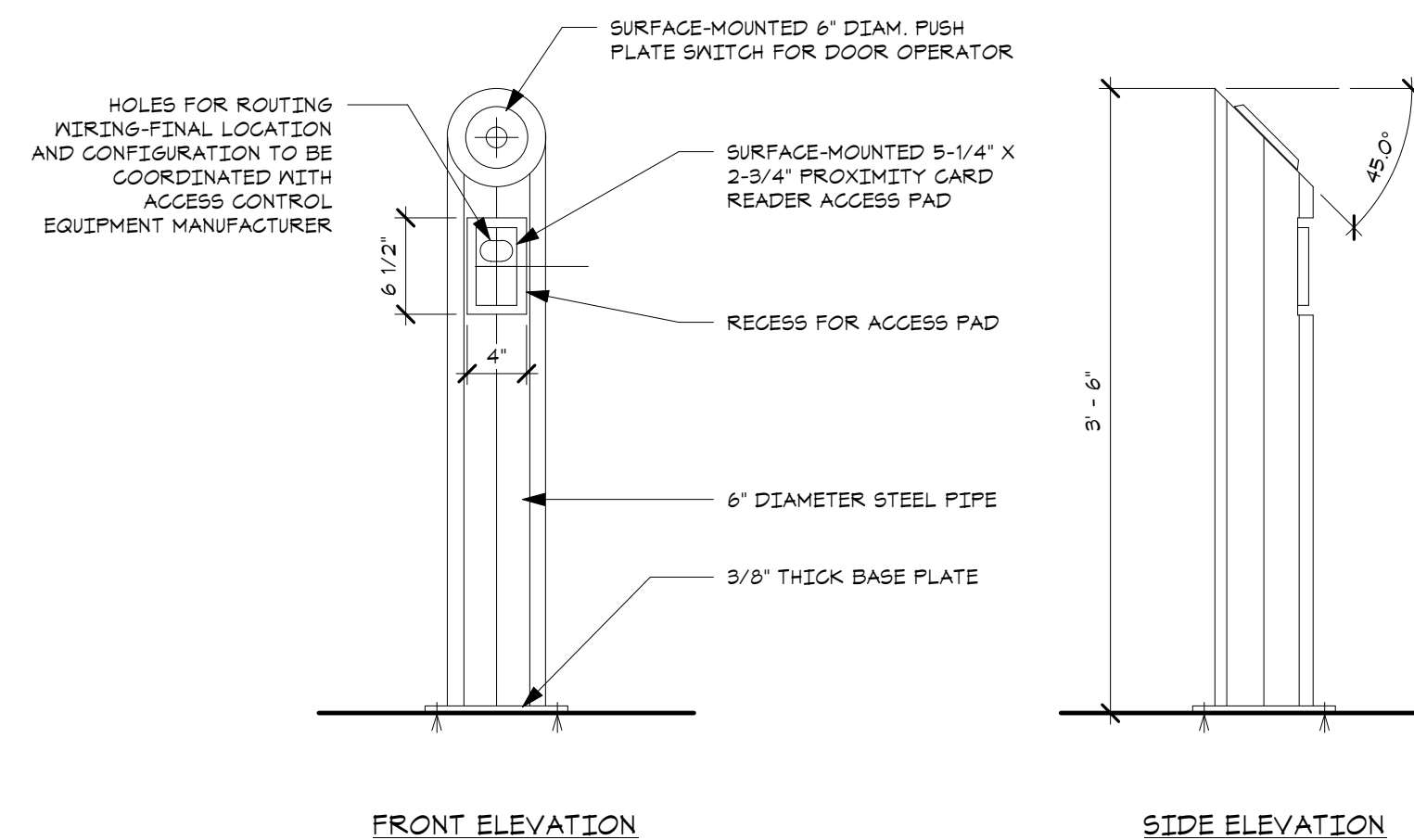
E3 DOOR FRAME ELEVATIONS
SCALE: 1/4" = 1'-0"



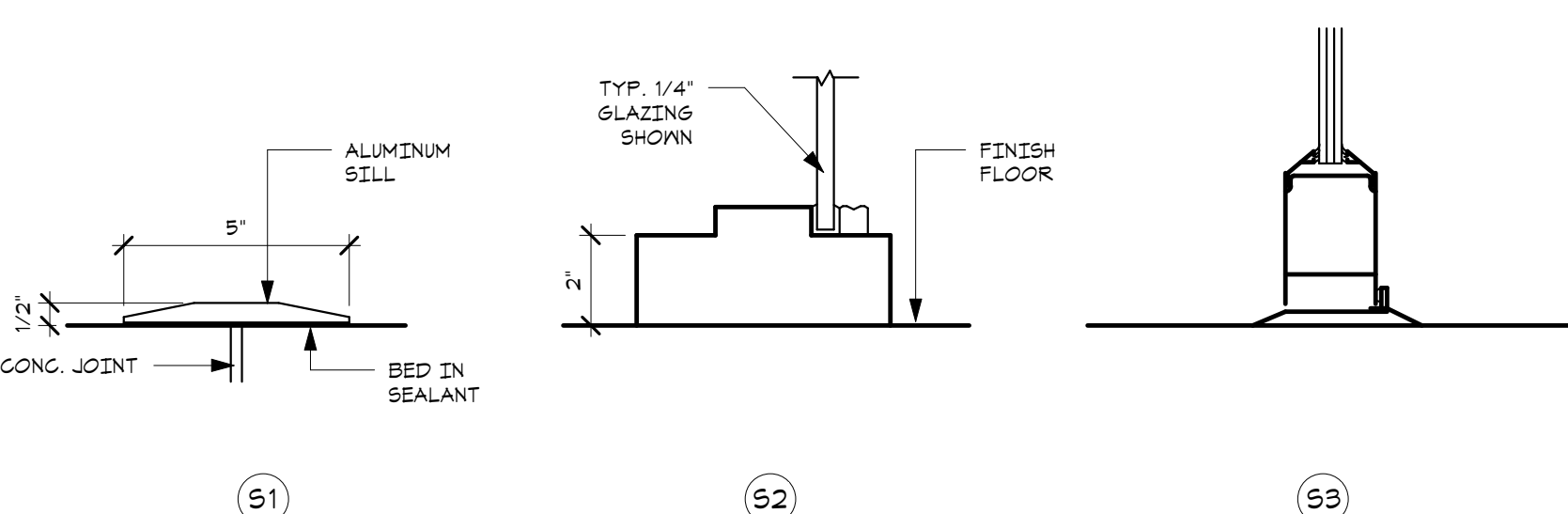
D3 HEAD DETAILS
SCALE: 3/8" = 1'-0"



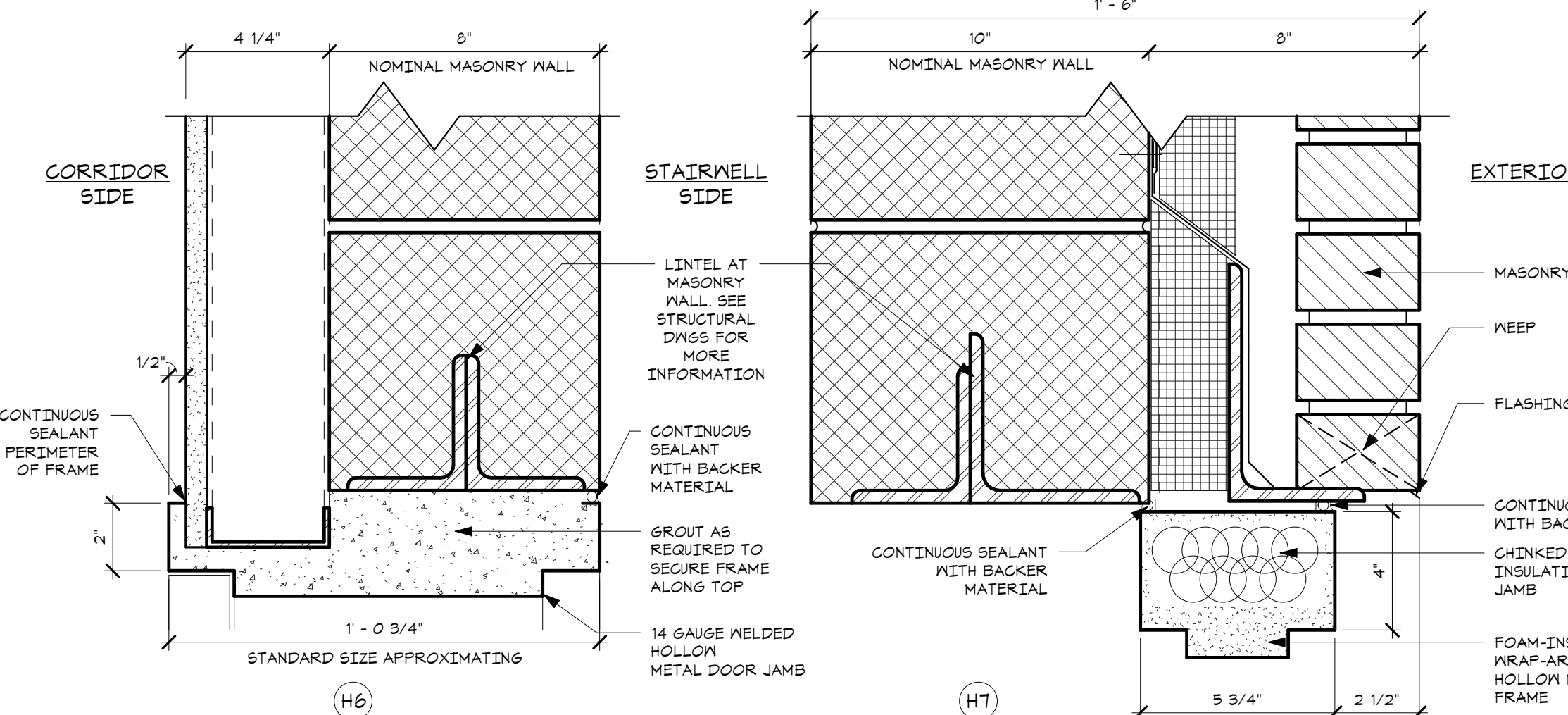
B3 JAMB DETAILS
SCALE: 3/8" = 1'-0"



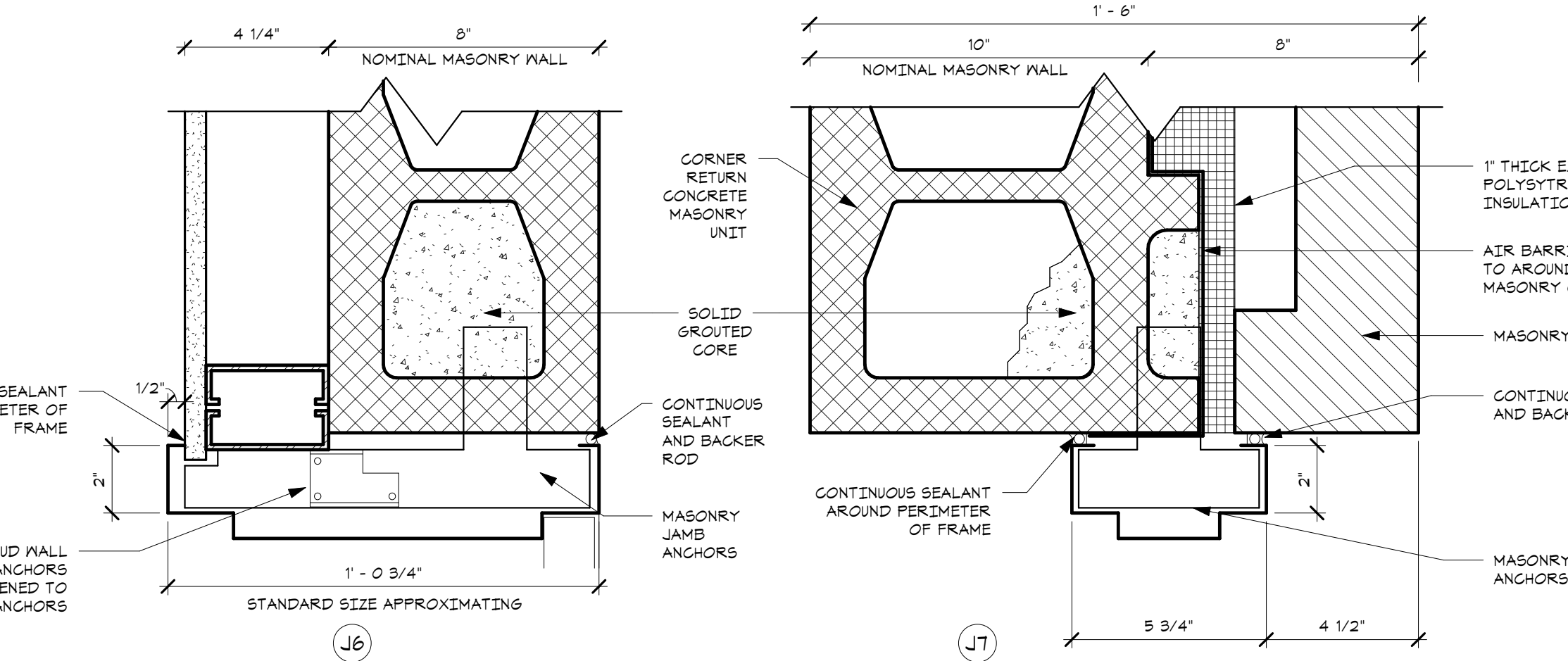
A1 BOLLARD FOR MOUNTING DOOR ACCESS CONTROL EQUIPMENT
SCALE: 1" = 1'-0"



A3 STILL DETAILS
SCALE: 3/8" = 1'-0"

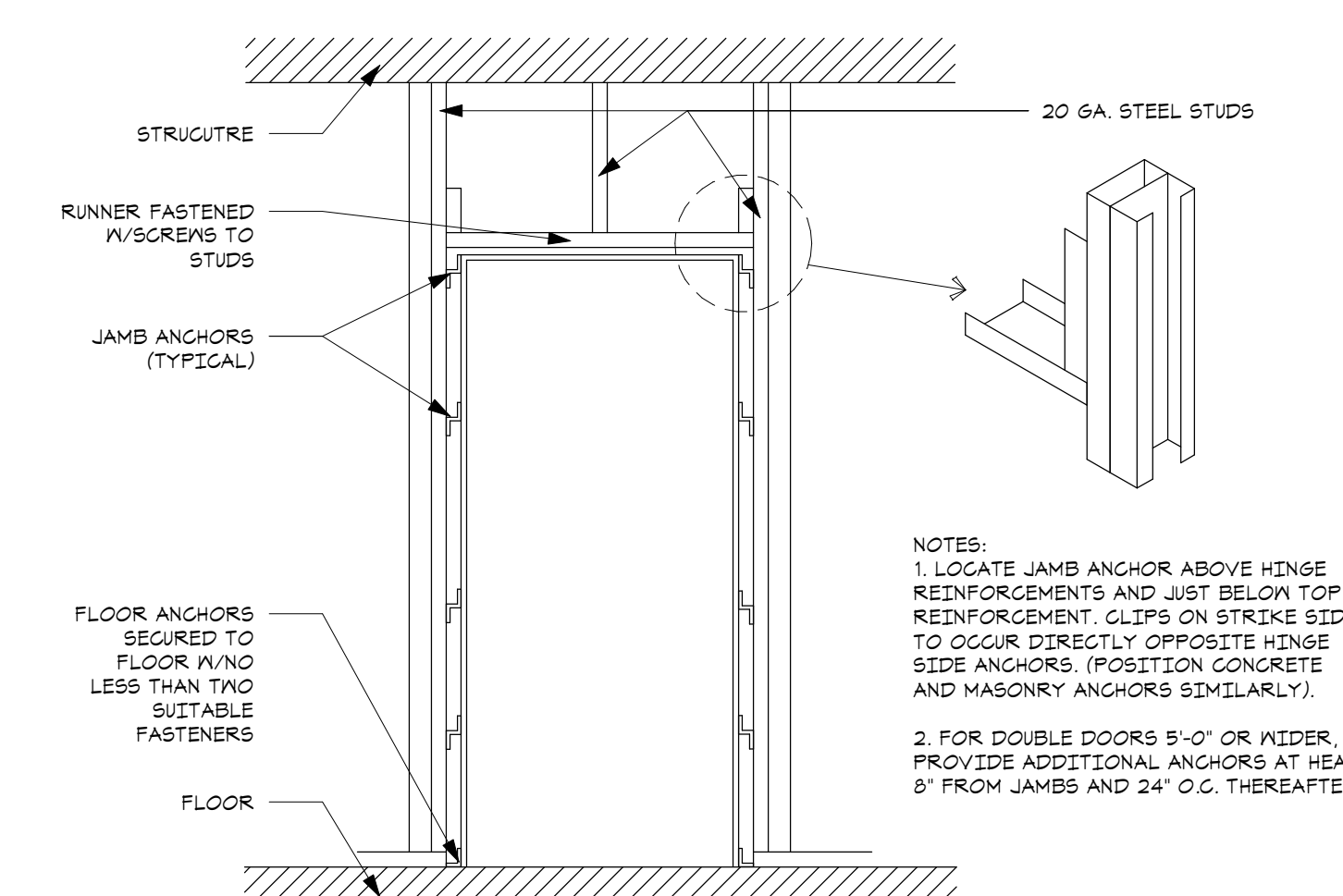


G6 WINDOW DETAILS
SCALE: 1/2" = 1'-0"

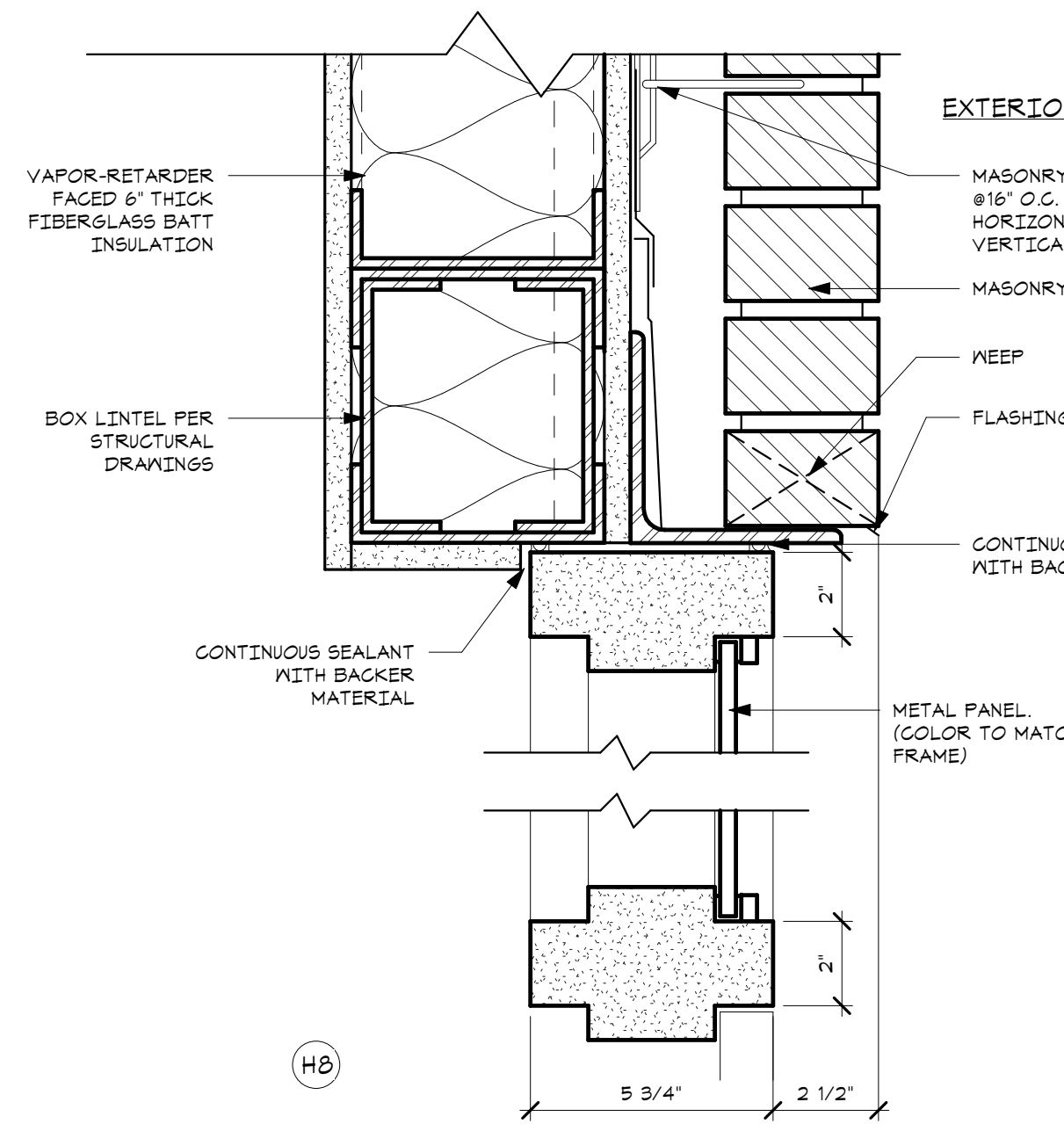


G7 WINDOW DETAILS
SCALE: 1/2" = 1'-0"

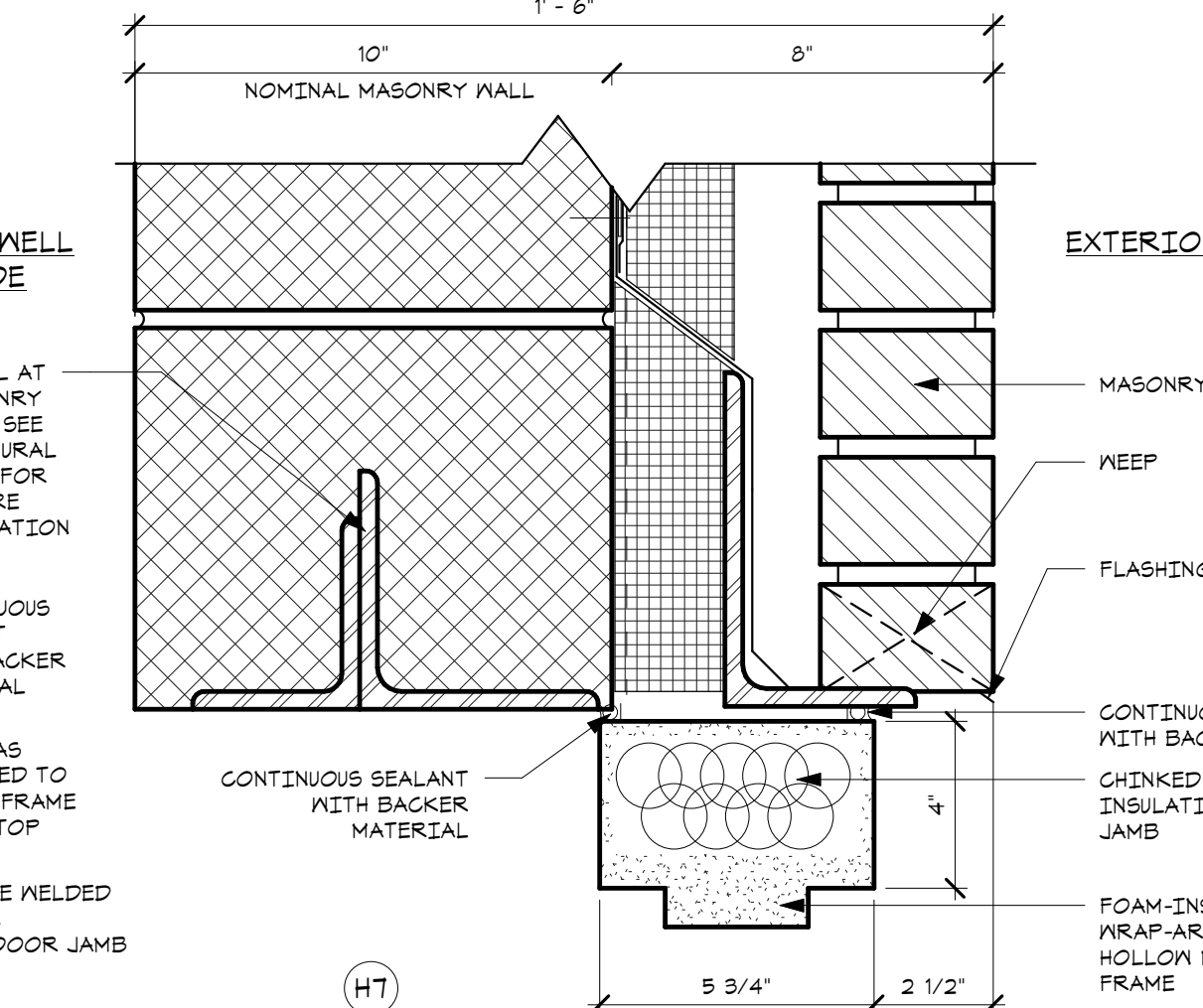
- GENERAL DOOR NOTES & FRAME DETAILS**
SCALE: 1/2" = 1'-0"
- ALL DOORS MUST OPEN TO A FULL 90° (OR 180° WHERE INDICATED).
 - MAINTAIN A 4" MINIMUM CLEARANCE (UNLESS OTHERWISE SHOWN IN PLAN) BETWEEN DOOR FRAME AND ADJACENT PARTITION.
 - MAINTAIN CONTINUITY OF SMOKE AND RATED PARTITIONS AT DOOR OPENINGS.
 - CONTRACTOR TO COORDINATE DOOR VISION PANEL CUT-OUT WITH HARDWARE CUT-OUTS.
 - REFER TO SPECIFICATIONS FOR HARDWARE SET TYPES.
 - MANUFACTURER'S INSTALLATION INSTRUCTIONS SHALL BE AVAILABLE ON THE JOB SITE FOR ALL RATED DOOR ASSEMBLIES.
 - FIELD VERIFY EXISTING WALL FOR THROAT DIMENSION OF FRAME WHERE A NEW DOOR IS INSTALLED IN AN EXISTING WALL. ALSO, FIELD VERIFY DIMENSIONS WHERE A NEW WALL IS TO ALIGN WITH THE EXISTING WALL.



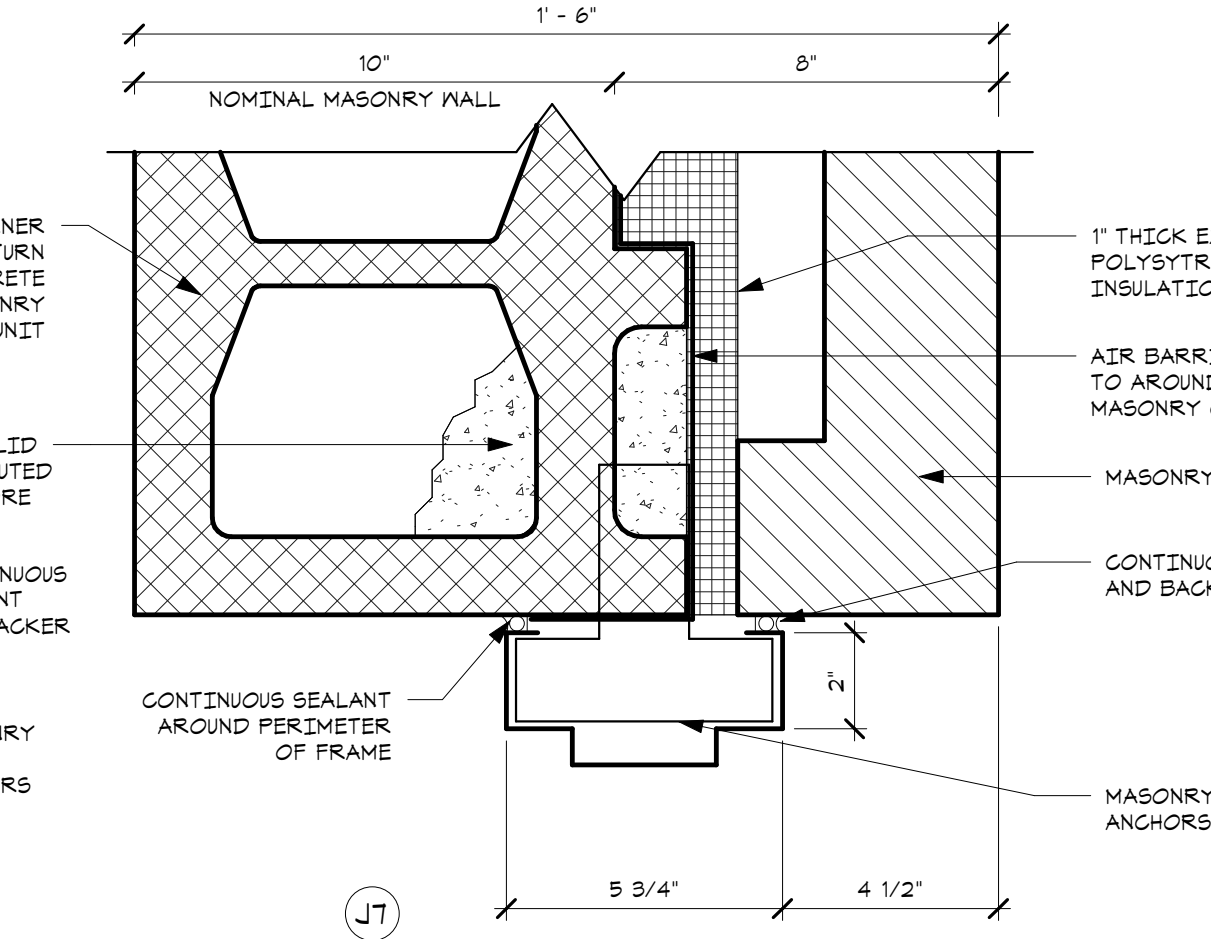
A6 DOOR FRAME DETAIL
SCALE: 1/2" = 1'-0"



G6 WINDOW DETAIL



H6 WINDOW DETAIL



J6 WINDOW DETAIL

Goodman Associates
PLANNING ■ ARCHITECTURE ■ INTERIOR DESIGN

912 COMMERCE ROAD ANNAPOLIS, MD 21401 V-410-841-2570 F-410-841-2575

STATE OF MARYLAND LICENSE NUMBER 14696
© 2008 OR GOODMAN ASSOCIATES, LLC
THESE DRAWINGS ARE THE PROPERTY OF THE ARCHITECT. OR GOODMAN ASSOCIATES, LLC. UNAUTHORIZED REPRODUCTION FOR ANY PURPOSE IS AN INFRINGEMENT UPON COPYRIGHT LAWS. VIOLATORS WILL BE SUBJECT TO PROSECUTION TO THE FULLEST EXTENT OF THE LAW.

CONSULTANTS

SITE ENGINEER
N.G.S.O. ENGINEERING INC.
23725 THREE NOTCH ROAD, SUITE 200
HOLLYWOOD, MARYLAND 20636
PHONE: 301-475-8700
FAX: 301-475-8705

STRUCTURAL ENGINEER
MORABITO CONSULTANTS, INC.
952 RIDGEBROOK ROAD, SUITE 1700
SPARKS, MARYLAND 21152
PHONE: 410-467-2377
FAX: 410-467-4132

MECHANICAL & ELECTRICAL ENGINEER
LEACH WALLACE ASSOCIATES, INC.
6522 MEADOWRIDGE ROAD
ELK RIDGE, MARYLAND 21075
PHONE: 410-579-8100
FAX: 410-540-9041

PROJECT KEY PLAN

ISSUE	DATE	NUMBER
BID ISSUE #2	03/16/09	1
APPENDIX #1	04/02/09	2

CLIENT
ST. MARY'S HOSPITAL

PROJECT TITLE
MEDICAL OFFICE BUILDING

DATE 03.16.09

CRGA PROJECT NUMBER 08.056.A

DRAWING TITLE
DOOR SCHEDULES

DRAWING NUMBER
A601
CORE SHELL