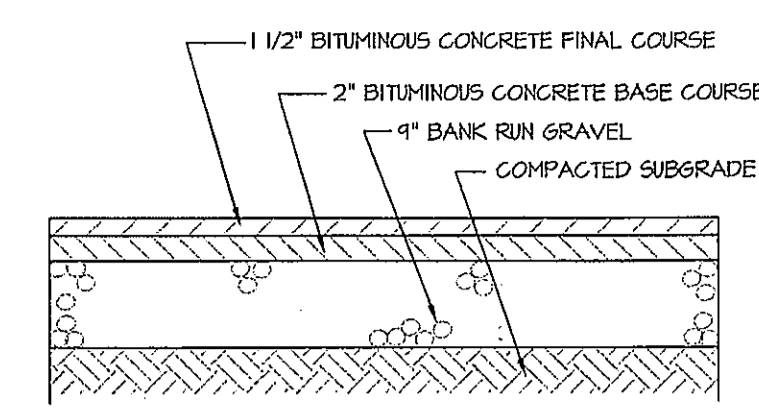
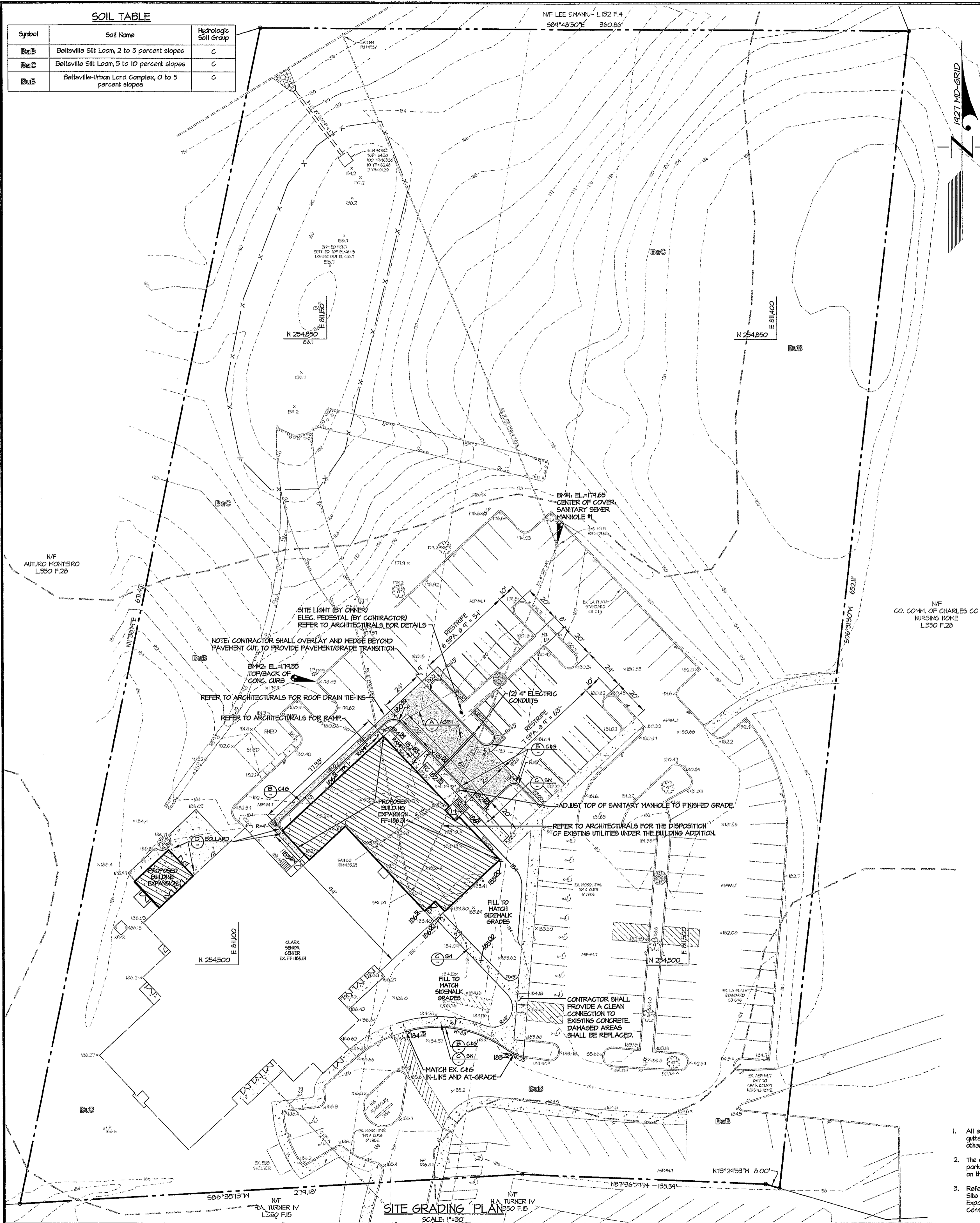
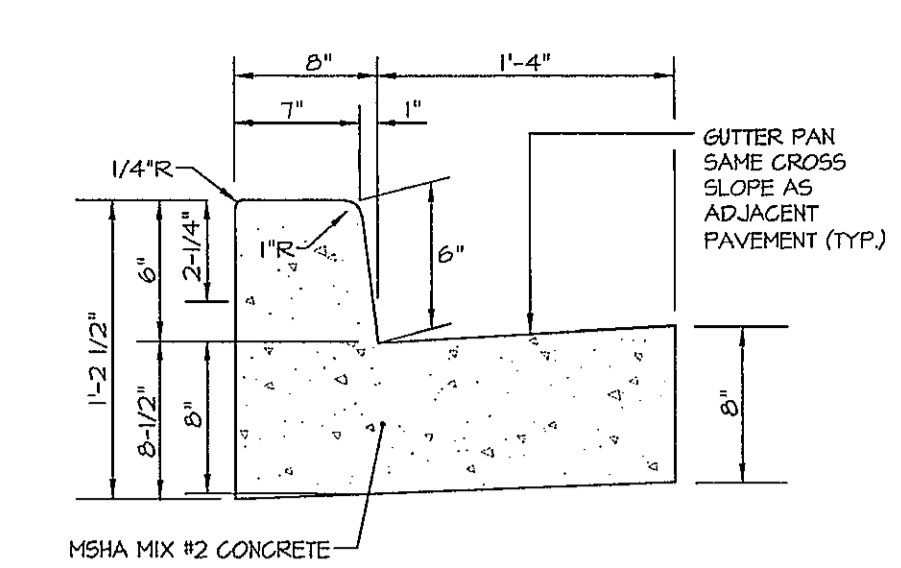


Symbol	Soil Name	Hydrologic Soil Group
BaB	Beltsville Silt Loam, 2 to 5 percent slopes	C
BaC	Beltsville Silt Loam, 5 to 10 percent slopes	C
BaB	Beltsville-Urban Land Complex, 0 to 5 percent slopes	C

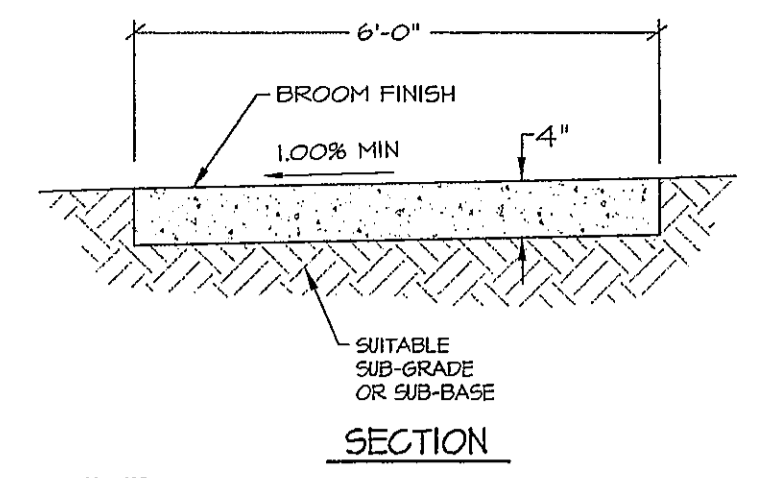


AN EVALUATION OF THE PROPOSED PAVEMENT SECTION BASED ON EXISTING SUBSURFACE AND SUBGRADE SOIL CONDITIONS, AND WORST CASE SCENARIO FOR TRAFFIC VOLUMES (EA.1.1) IS REQUIRED TO BE SUBMITTED BY A LICENSED GEOTECHNICAL ENGINEER PRIOR TO PLACEMENT OF THE SUB-BASE MATERIALS.

**A ASPHALT PAVING SECTION**  
CHARLES COUNTY STANDARD P-1  
NOT TO SCALE

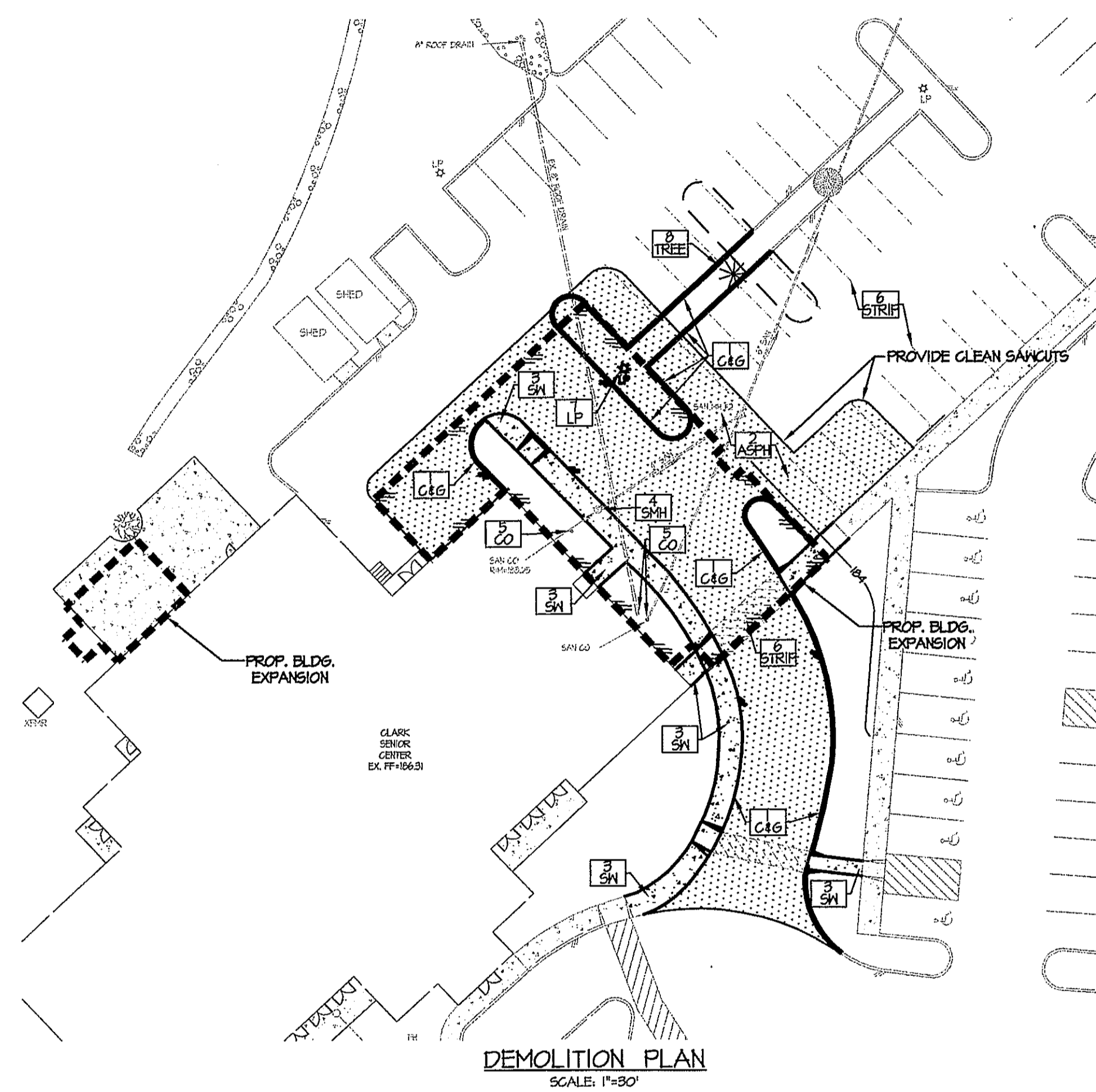


**B 6" COMBINATION CURB & GUTTER**  
CHARLES COUNTY STANDARD 2.22  
NOT TO SCALE

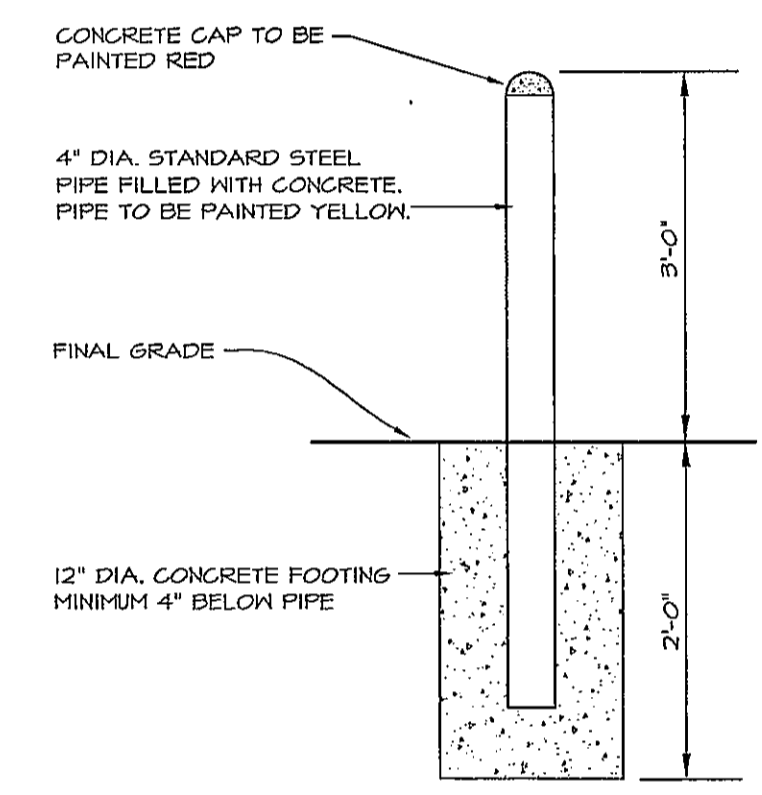


**NOTES:**  
1. SIDEWALK TO BE SCRIBED IN 6"x4" SECTIONS.  
2. EXPANSION JOINTS ACROSS THE SIDEWALK ARE NOT TO BE MORE THAN 10' APART.  
3. 1/2" PREFORMED BITUMINOUS EXPANSION JOINT FILLER IN THE EXPANSION JOINTS TO BE 1/4" BELOW THE SURFACE OF THE SIDEWALK.  
4. CONCRETE SHALL BE SH4 MIX NO. 2.  
5. WHERE SIDEWALK ABUTS CURB, THE SIDEWALK SHALL BE 1/4" ABOVE CURB WITH 1/2" PREFORMED BITUMINOUS EXPANSION JOINT FILLER BETWEEN THEM.  
6. CONSTRUCT 1/2" PREFORMED EXPANSION JOINTS AT DRIVEWAYS, LEADWALKS, CURBS, POLES, OR ANY OTHER PERMANENT STRUCTURE.  
7. REFER TO ARCHITECTURALS FOR INDICATION OF SCRIBED LOCATIONS AT THE MAIN ENTRANCE MAY.  
8. A KEY PROJECTING BELOW THE SIDEWALK AND HINGLING WITH 1/2" THICK BY 6" DEEP, FILL WIDTH OF THE SIDEWALK, SHALL BE CONSTRUCTED ON GRADES OF 5% OR MORE, APPROXIMATELY MIDWAY BETWEEN EXPANSION JOINTS.

**C CONCRETE SIDEWALK**  
NOT TO SCALE

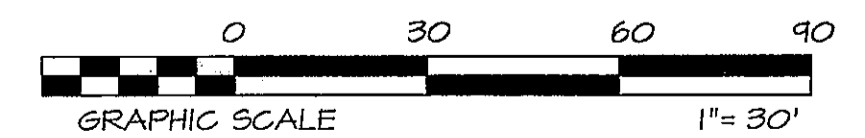


KEY NOTE	DESCRIPTION
C46	REMOVE CURB & GUTTER
ASPH	REMOVE ASPHALT PAVEMENT (PRIOR TO DEMOLITION, VERIFY ADDITIONAL AREAS OF EXISTING PAVEMENT THAT CAN BE SALVAGED)
SH	REMOVE CONCRETE SIDEWALK, WITH ADJACENT CURBING AND RAMPS
SM	ADJUST SANITARY MANHOLE TOP TO FINISHED GRADE. REFER TO ARCHITECTURAL PLANS FOR DISPOSITION OF EXISTING SEWER.
CO	REFER TO ARCHITECTURAL PLANS FOR DISPOSITION OF EXISTING SEWER CLEANOUTS.
LP	REMOVE EXISTING PAINT STRIPING
LP	REMOVE LIGHT POLE & FOUNDATION. CAP ELEC. SERVICE BELOW GRADE & MARK LOCATION. REMOVE EXISTING ELECTRIC AT THE DIRECTION OF THE OWNER.
TR	REMOVE TREE

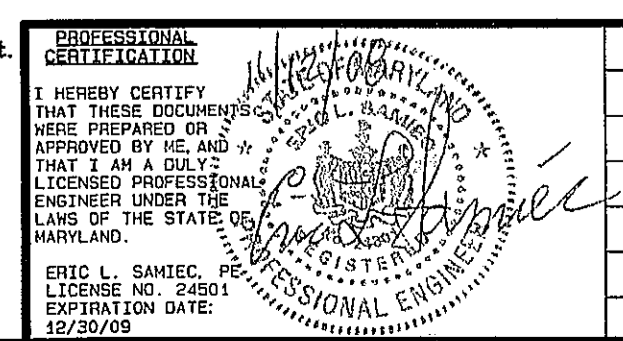


**D CONCRETE BOLLARD DETAIL**  
NOT TO SCALE

**SITE GRADING PLAN,  
DEMOLITION PLAN,  
& SITE DETAILS  
RICHARD R. CLARK  
SENIOR CENTER**  
TOWN OF LA PLATA  
1ST ELECTION DISTRICT  
CHARLES COUNTY, MARYLAND



- NOTES:**
- All elevations adjacent to curb & gutter are bottom of curb, unless otherwise noted.
  - The Contractor is responsible for all parking lot paint striping as depicted on these plans.
  - Refer to Architectural drawings for Site Lighting Details, Building Expansion Layout and Utility Connections layout.
- LEGEND**
- ASPH = Detail Designation. Refer to Site Details, This SH.
  - x193.2 = Proposed Spot Elevation
  - x195.2 = Existing Spot Elevation
  - = Soil Boundary
  - BaB = Soils Series Abbreviation



DATE	DESCRIPTION	BY	SCALE	REVISIONS	DATE	DESCRIPTION	BY	SCALE	REVISIONS
			1"=30'						

0376 CHEESAPEAKE STREET, SUITE 227  
P.O. BOX 2727, LA PLATA, MARYLAND 20646  
BEN DYER ASSOCIATES, INC.  
Engineers / Surveyors / Planners  
TELEPHONE (301) 763-1696  
COPYRIGHT © 2008 BEN DYER ASSOCIATES, INC.  
DRAWN BY DESIGNED BY CHECKED BY RECORD NO.  
JLT JLE ELS B-02542  
DATE SEPTEMBER, 2008 ERWG. NO. 06.00.02-Y