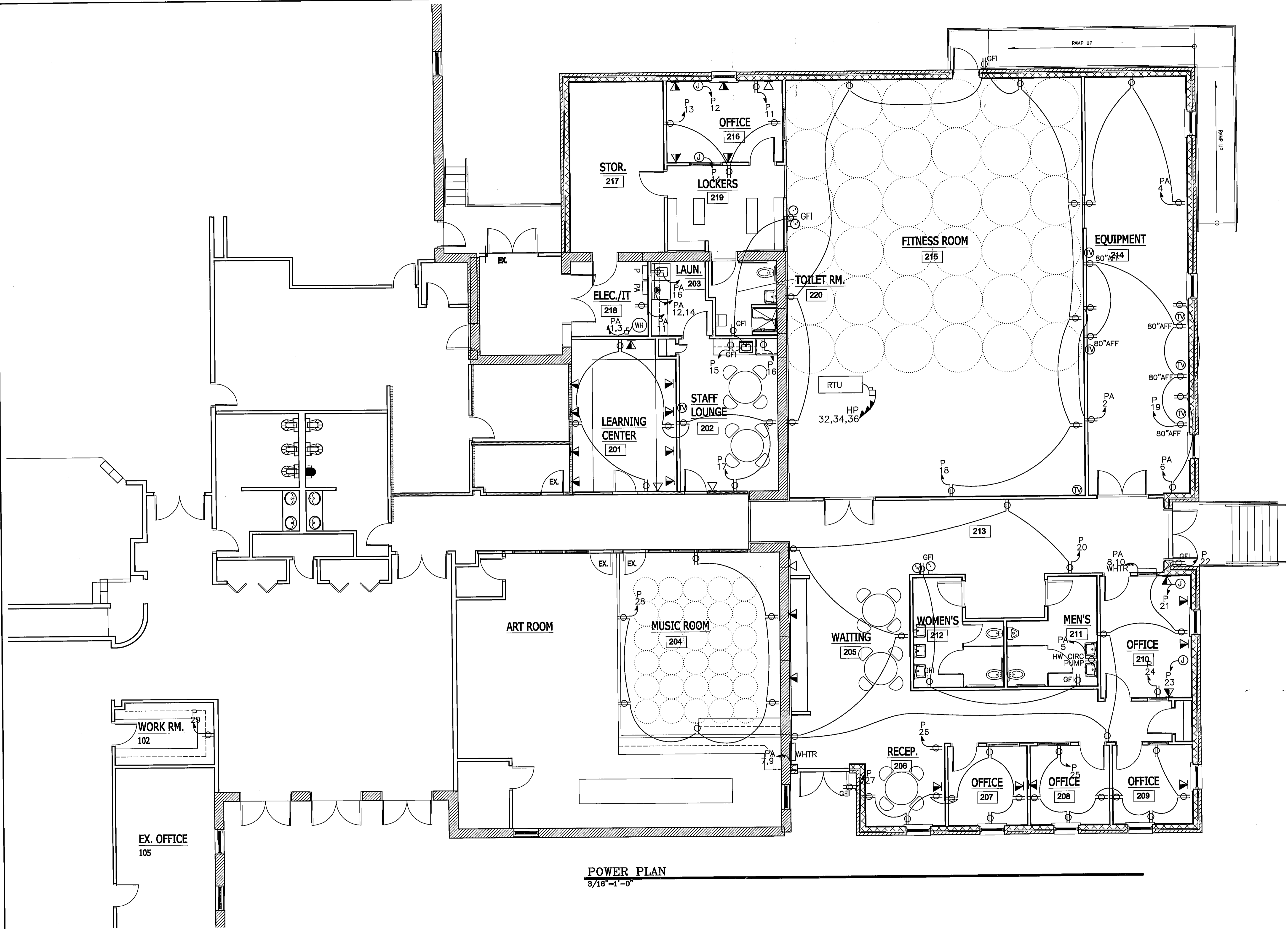


|           |
|-----------|
| REVISIONS |
|           |
|           |
|           |



**POWER PLAN**  
3/16"=1'-0"

**ADDITION TO CLARK CENTER**  
LA PLATA, MARYLAND

R.L. LITTEN & ASSOCIATES, ARCHITECTS, LLC  
300 CHARLES STREET, SUITE 4  
P.O. BOX 1920, LAPLATA, MD 20646 (301) 934-1471

**LEWIS ENGINEERING ASSOCIATES, INC**  
**MECHANICAL and ELECTRICAL ENGINEERS**  
28841 RIVERWATCH DRIVE, MECHANICSVILLE, MD 20659  
PHONE (301) 884-3370 FAX (301) 884-2854 EMAIL lewiseng.net

|          |
|----------|
| KL       |
| RL       |
| 07-14-09 |
| 05-79    |

911

**ENGINEER'S CERTIFICATION STATEMENT**  
I CERTIFY THAT THESE DOCUMENTS WERE PREPARED OR APPROVED BY ME, AND THAT I AM A DULY LICENSED ENGINEER UNDER THE LAWS OF THE STATE OF MARYLAND. LICENSE NO. 16927, EXPIRATION DATE MAY 12, 2010.