

ALL PART NUMBERS
REFER TO KING
ARCHITECTURAL METALS

STEEL HANDRAIL
MODEL 45-905

MTL. CAP
No. 5820

1/2" x 1"
FLAT BAR

2" x 2"
SQ. POST

5/8" SQ. PICKET
MODEL 13-45026-000
AT 4" O.C.

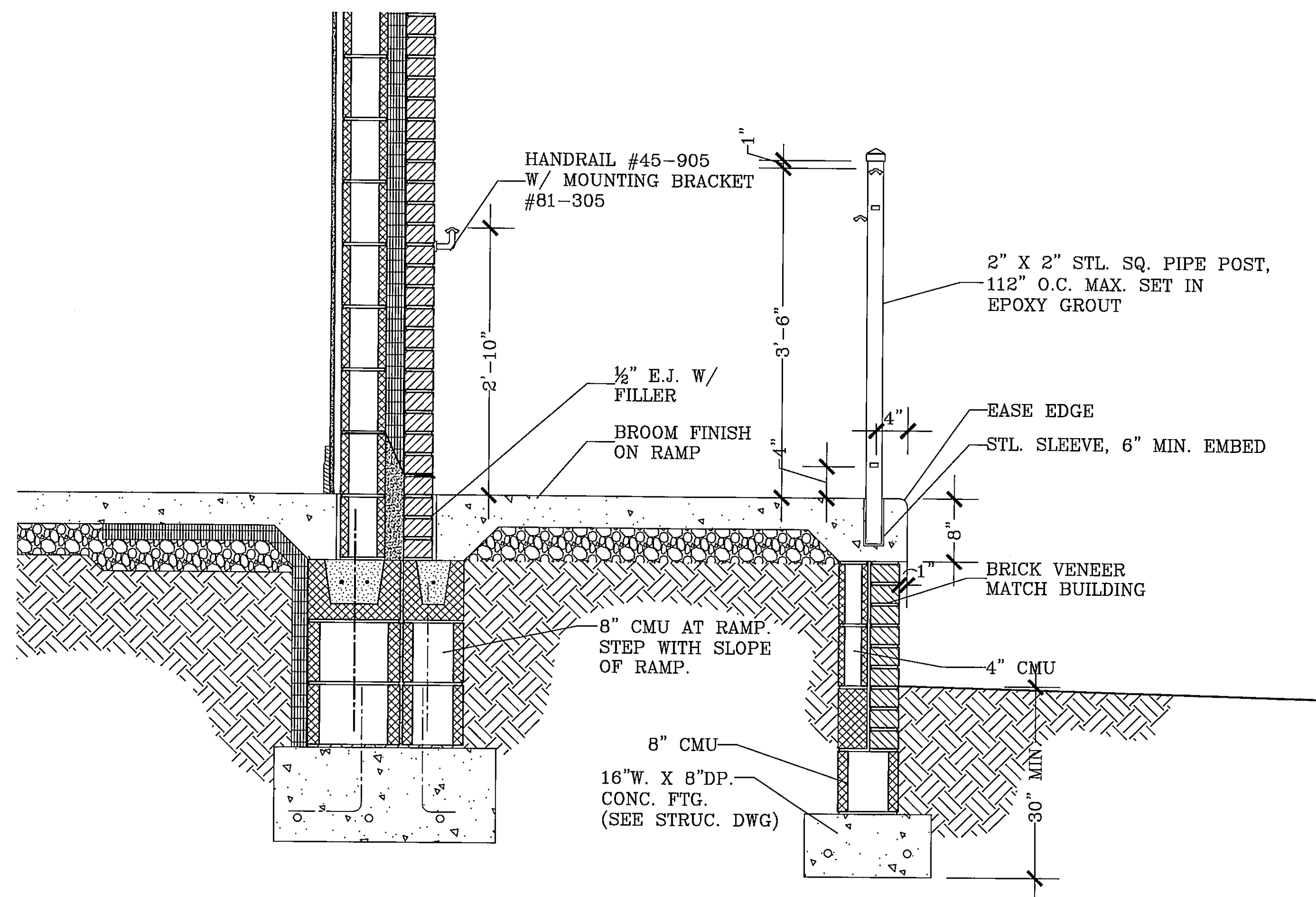
1/2" x 1"
FLAT BAR

45-234-2
SHOE

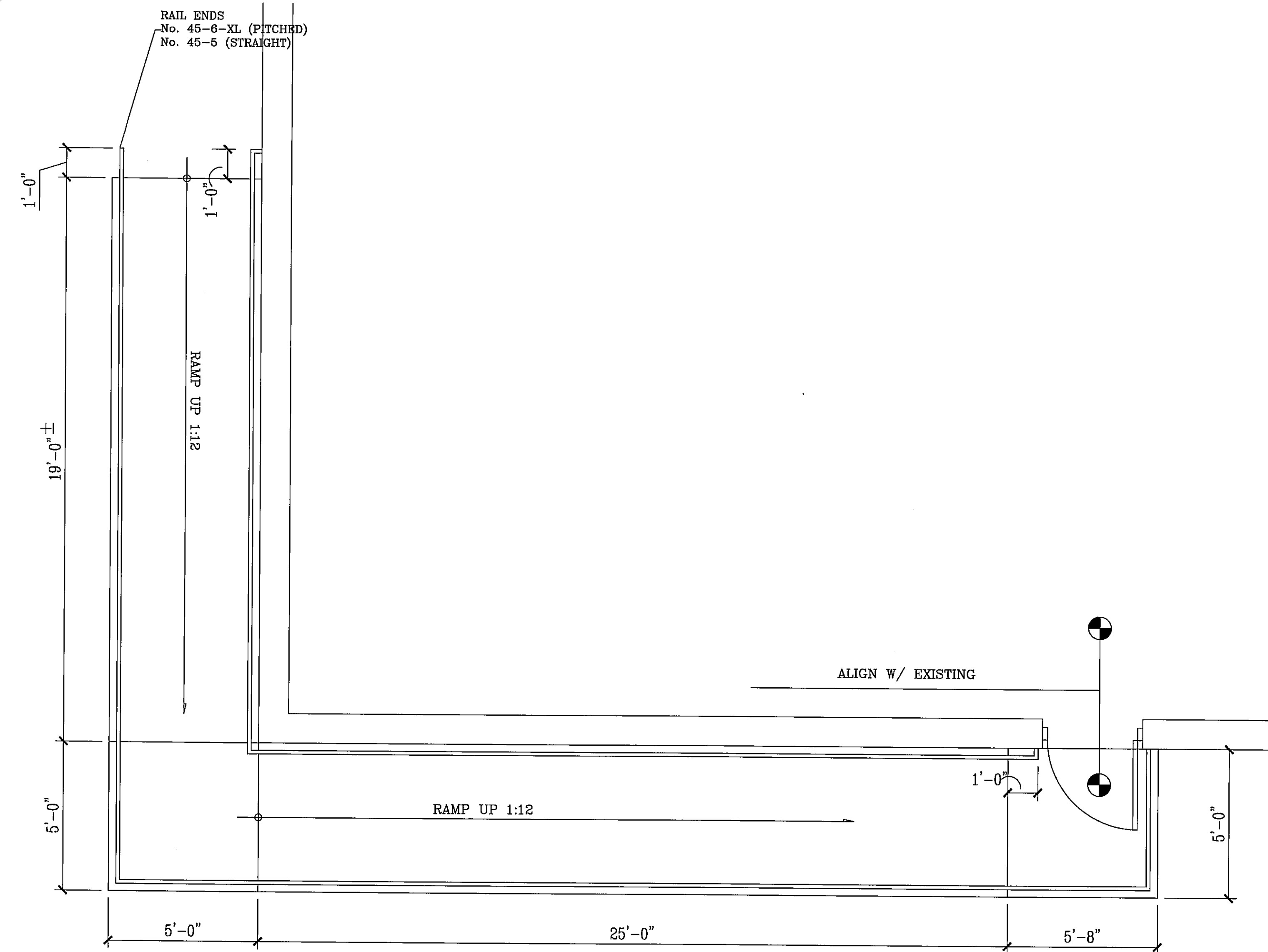
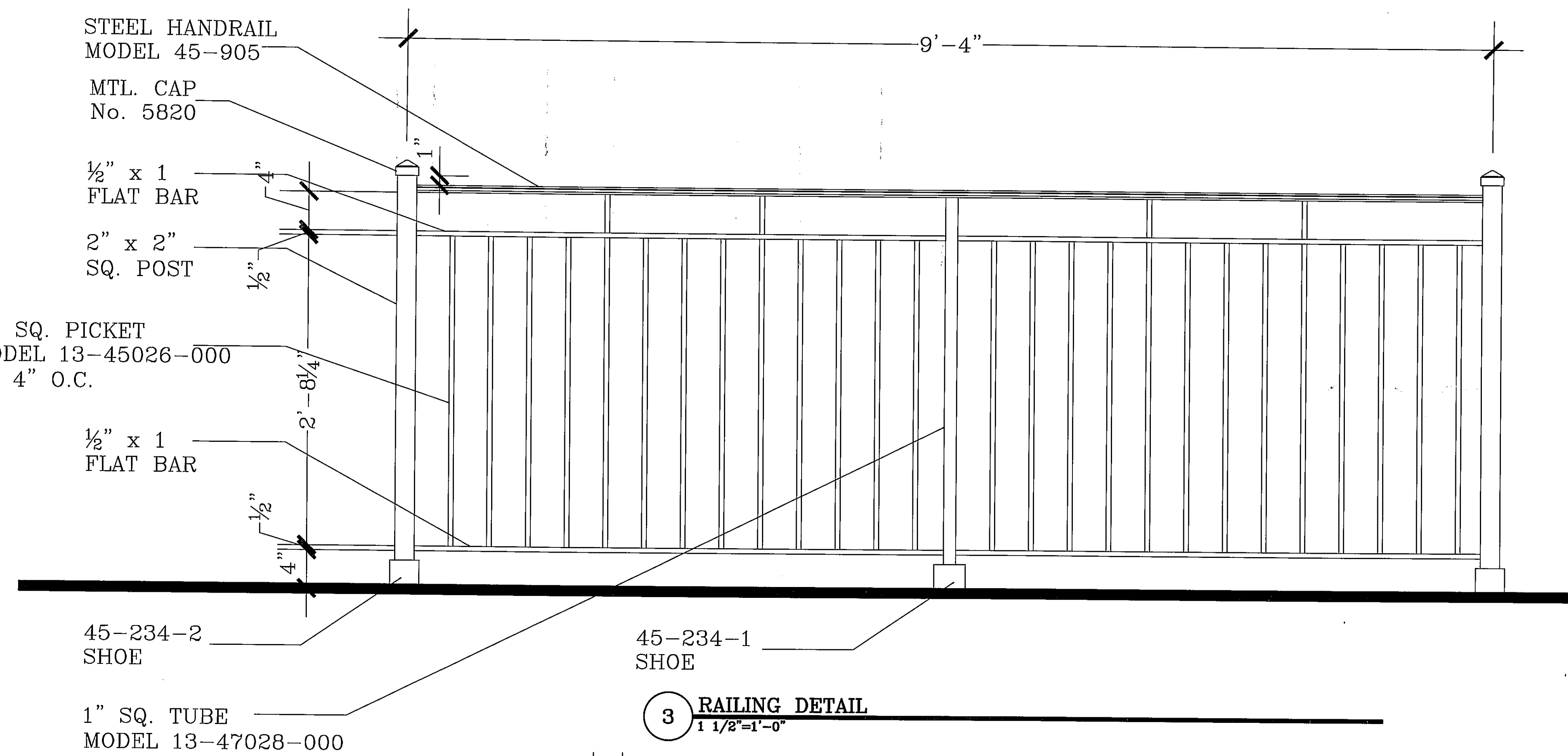
45-234-1
SHOE

1" SQ. TUBE
MODEL 13-47028-000

3 RAILING DETAIL
1 1/2"=1'-0"



2 RAMP SECTION
1"=1'-0"



1 HANDICAPPED RAMP PLAN
3/8"=1'-0"

ADDITION TO RICHARD R. CLARK SENIOR
CENTER
LA PLATA, MARYLAND

R.L. LITTEEN & ASSOCIATES, ARCHITECTS, LLC
300 CHARLES STREET, SUITE 4
P.O. BOX 1920, LAPLATA, MD 20646 (301) 934-1471

KL
RL
07-14-09
05-79

642