

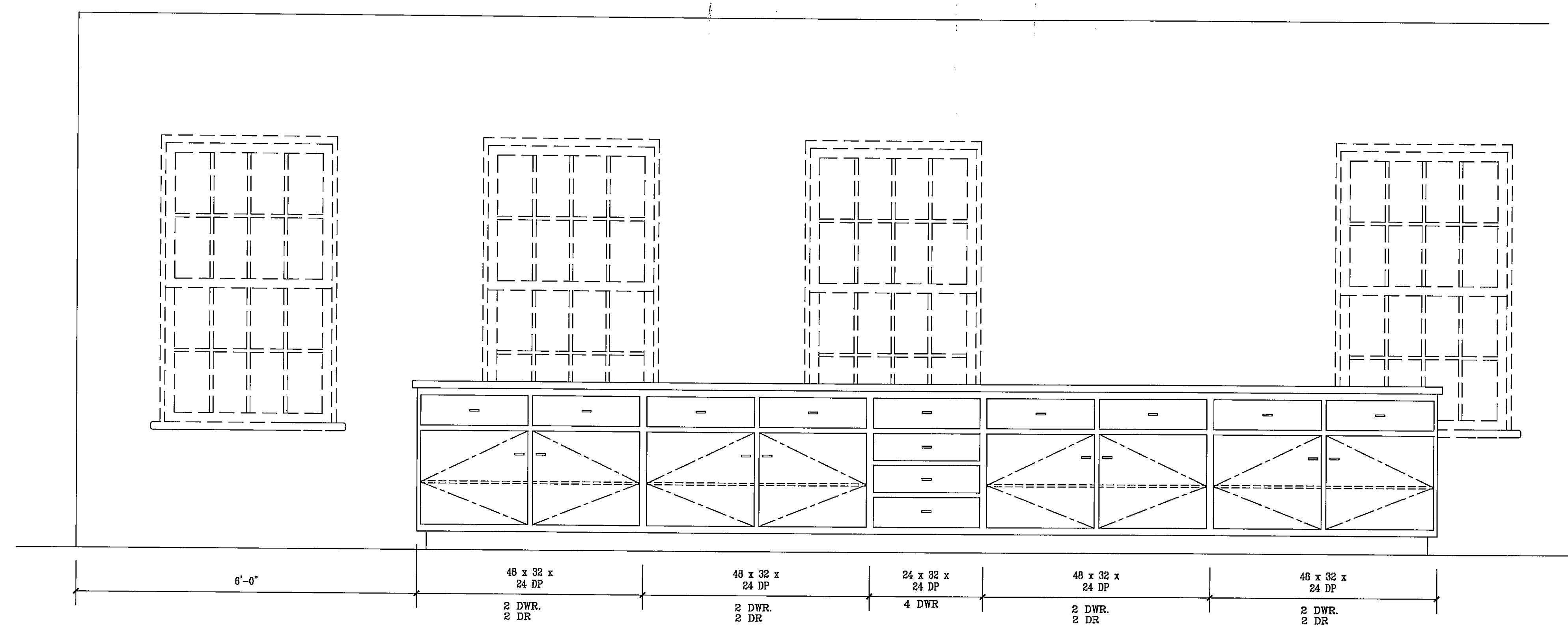
REVISIONS

ADDITION TO RICHARD R. CLARK SENIOR  
CENTER  
LA PLATA, MARYLAND

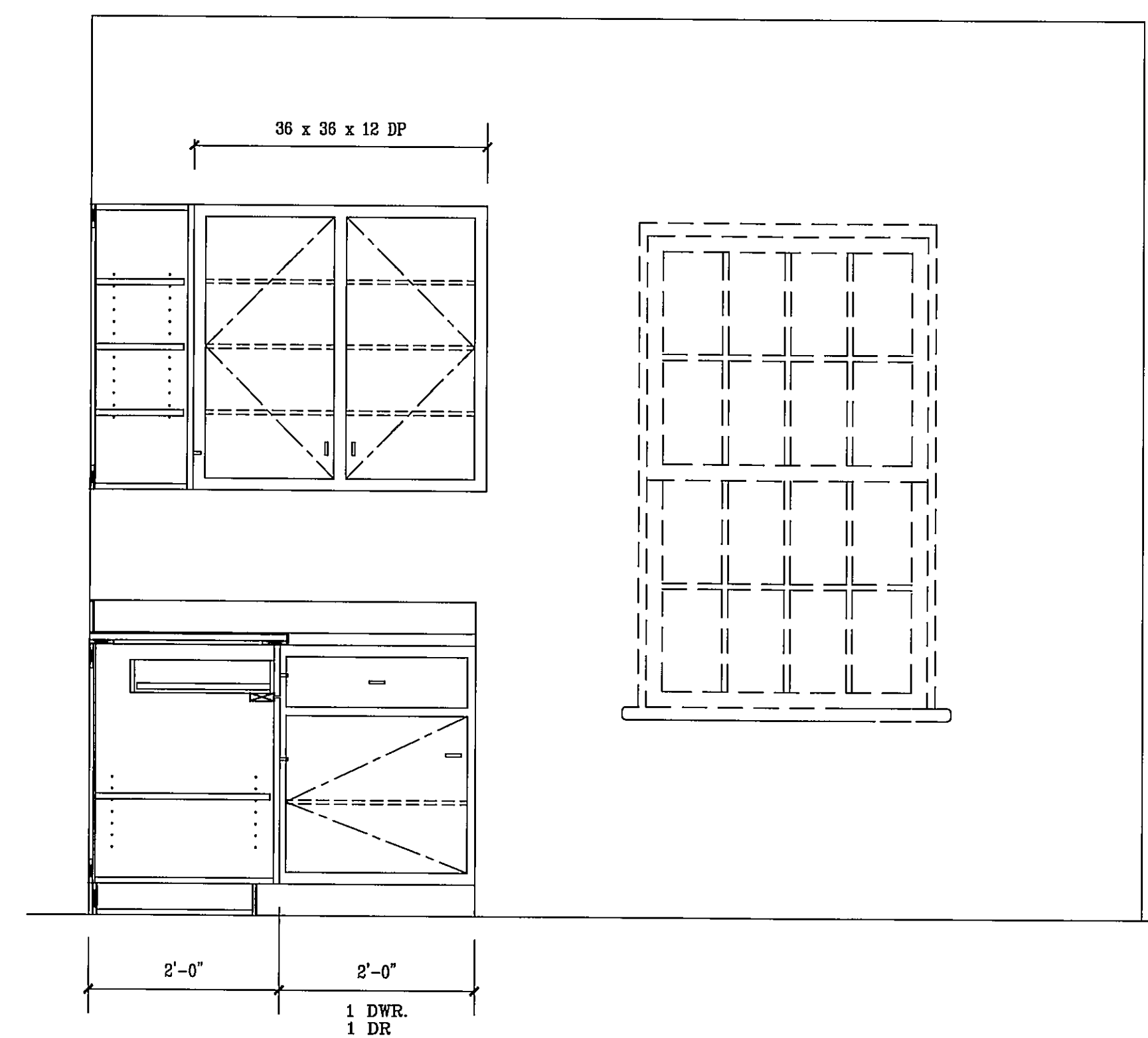
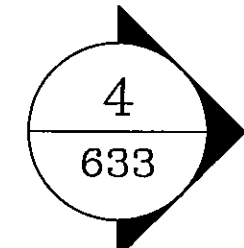
R.L. LITTEN & ASSOCIATES, ARCHITECTS, LLC  
300 CHARLES STREET, SUITE 4  
P.O. BOX 1920, LAPLATA, MD 20646 (301) 934-1471

KL
RL
07-14-09
05-79

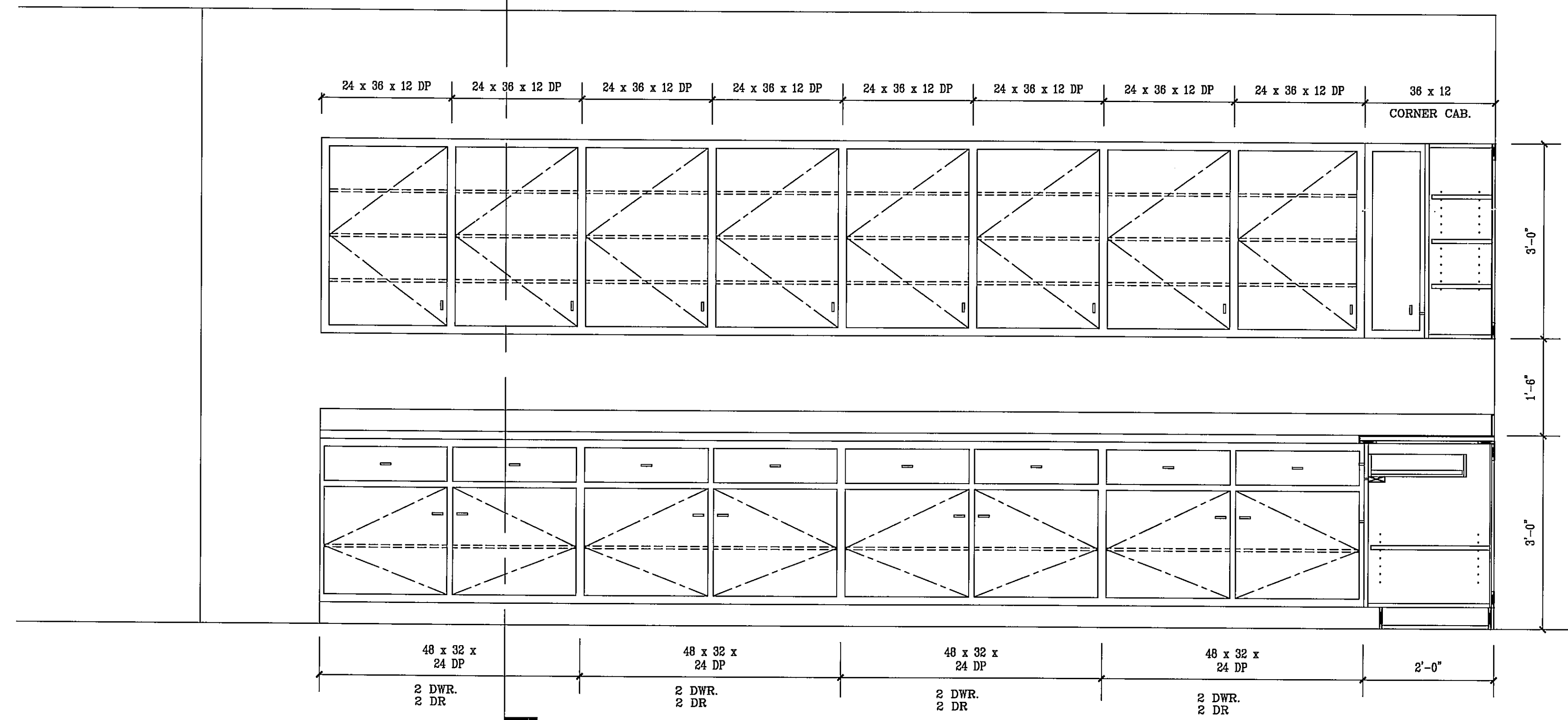
634



3 INTERIOR ELEVATION (ROOM 109) - REAR  
3/4"=1'-0"



2 INTERIOR ELEVATION (ROOM 109) - RIGHT SIDE  
3/4"=1'-0"



1 INTERIOR ELEVATION (ROOM 109) - FRONT  
3/4"=1'-0"