

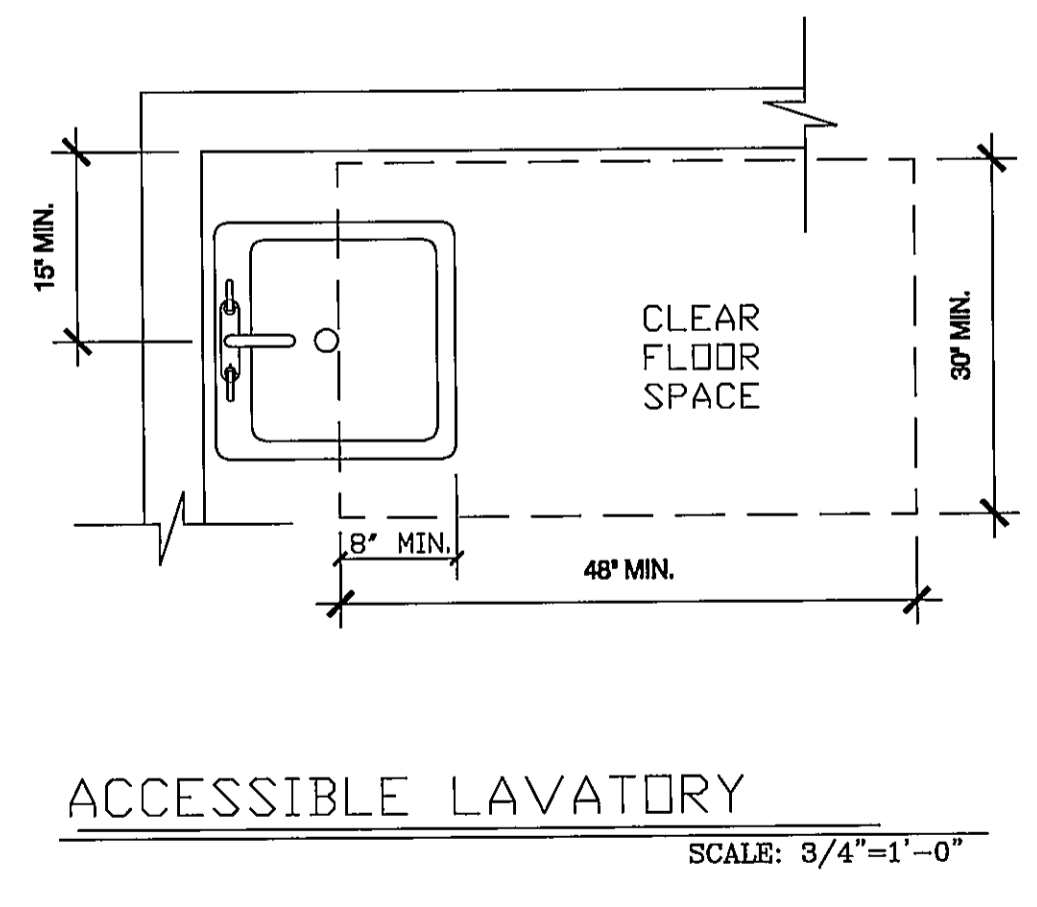
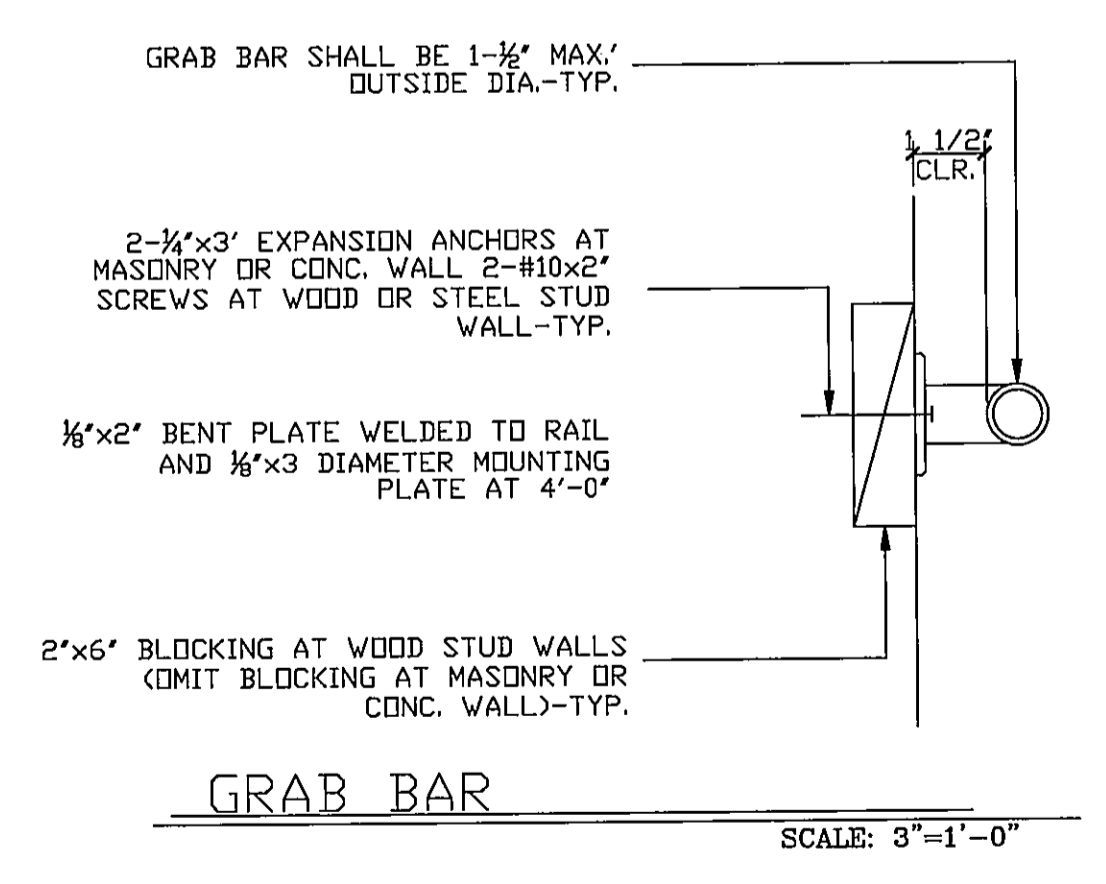
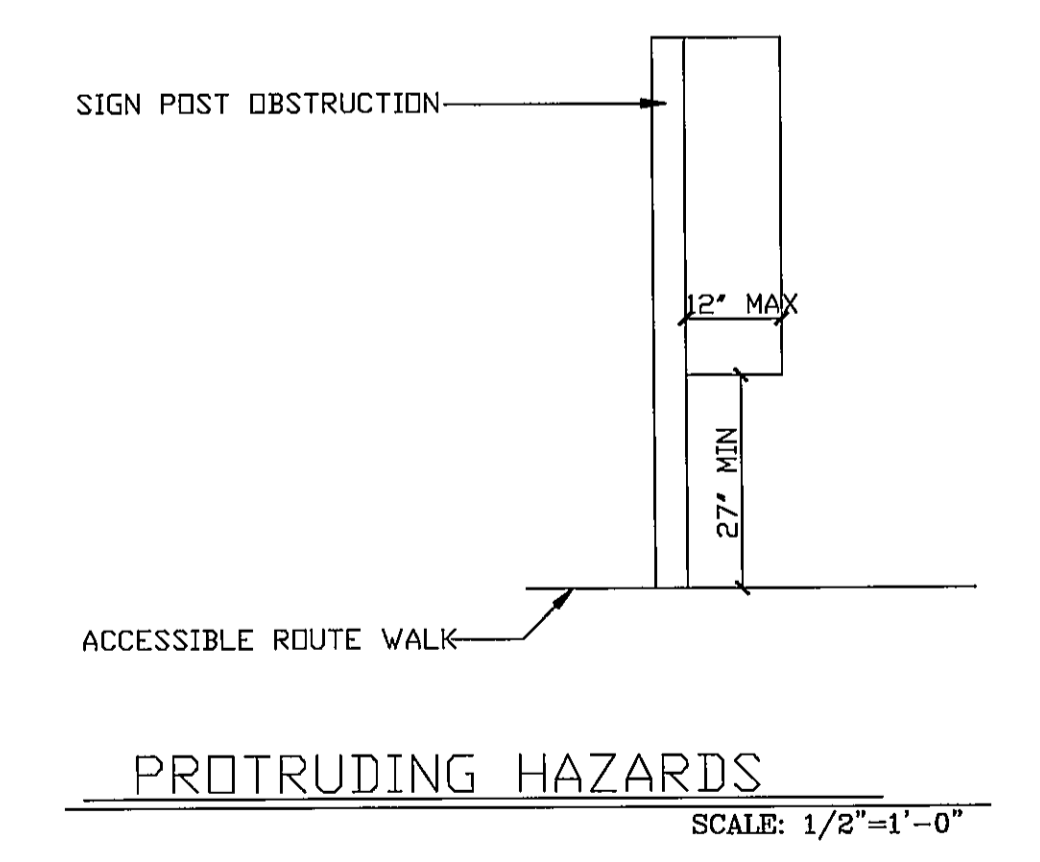
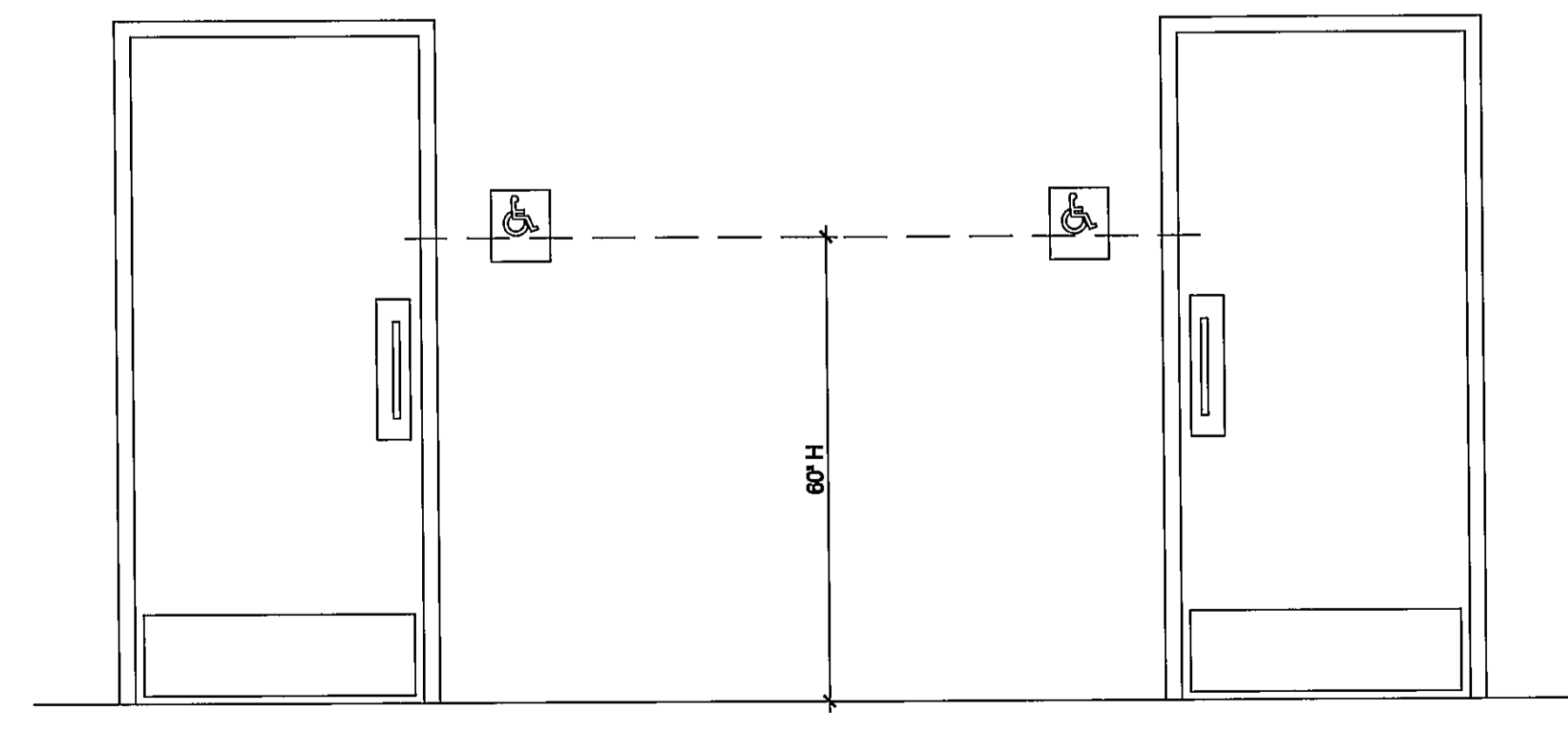
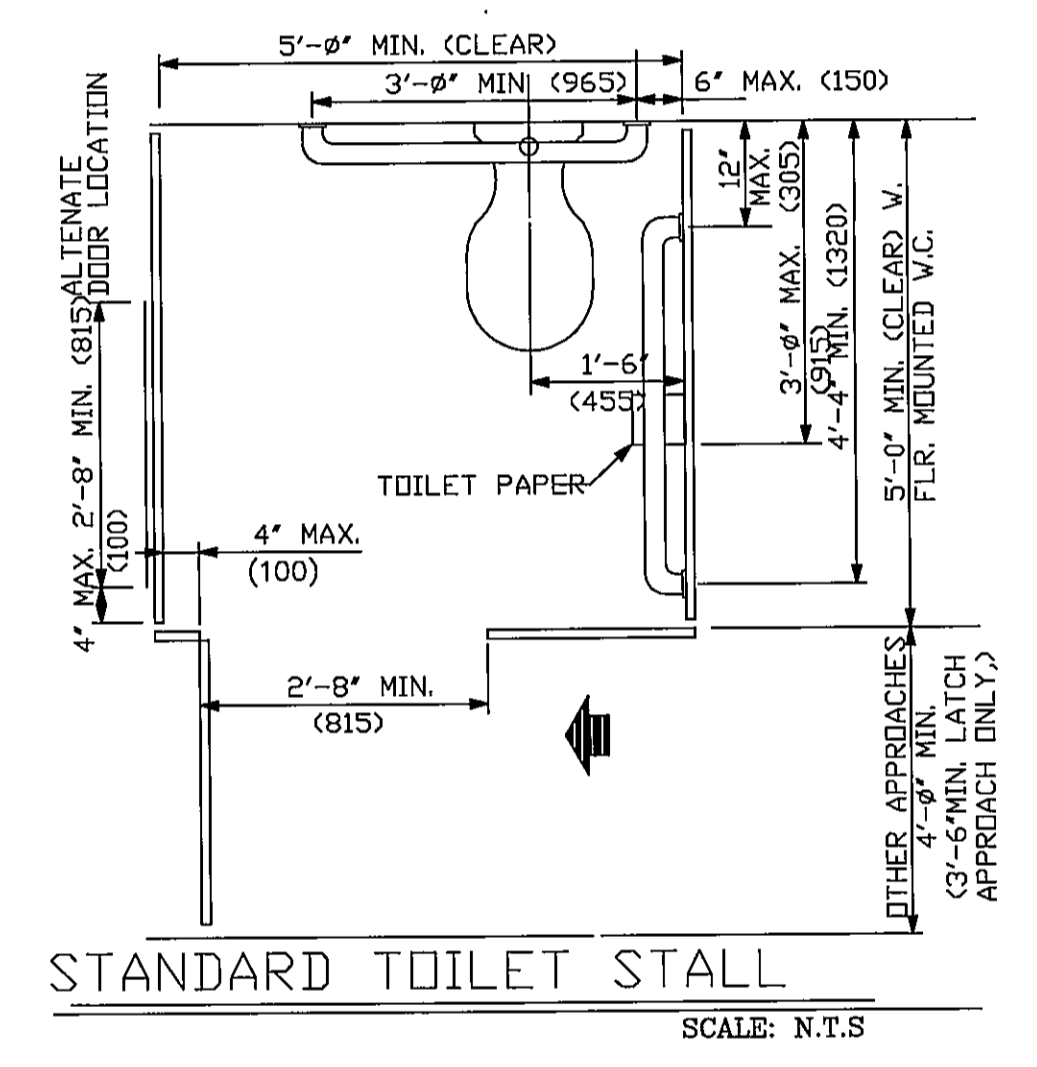
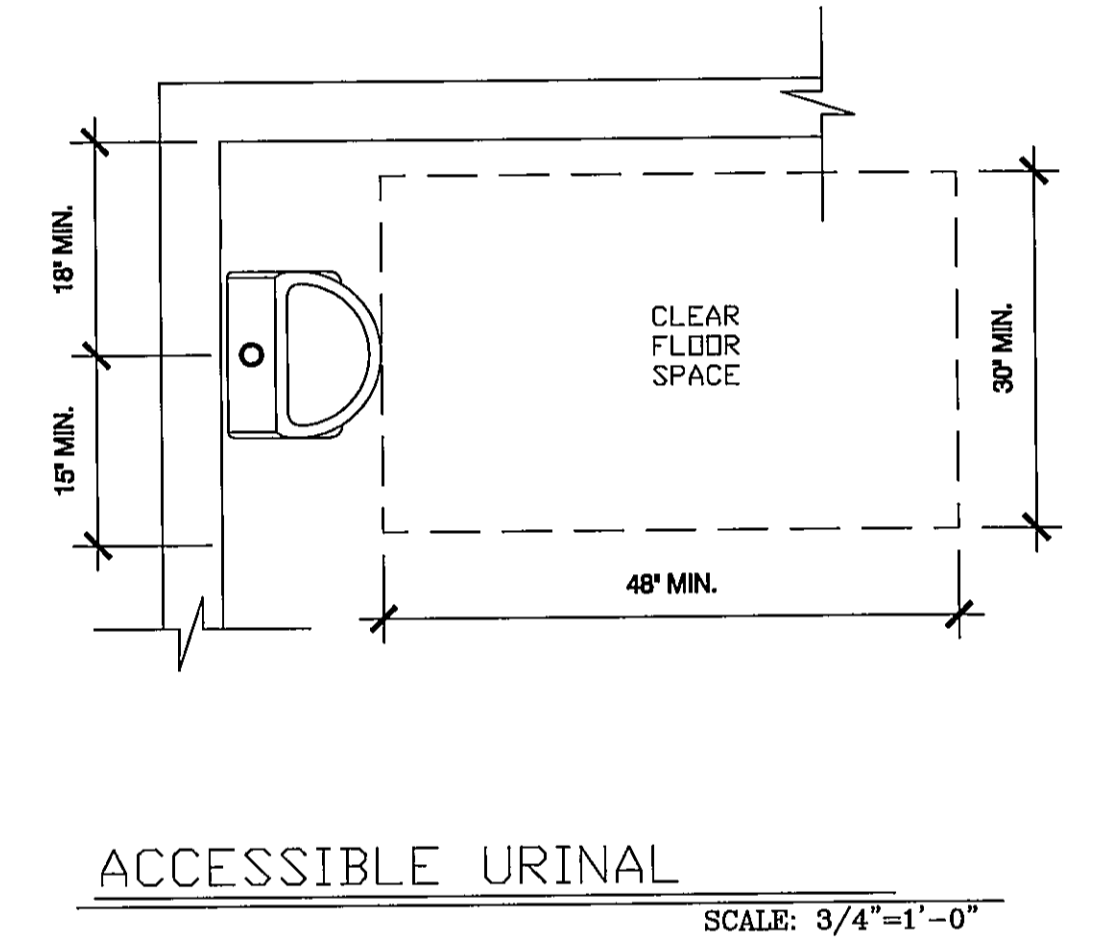
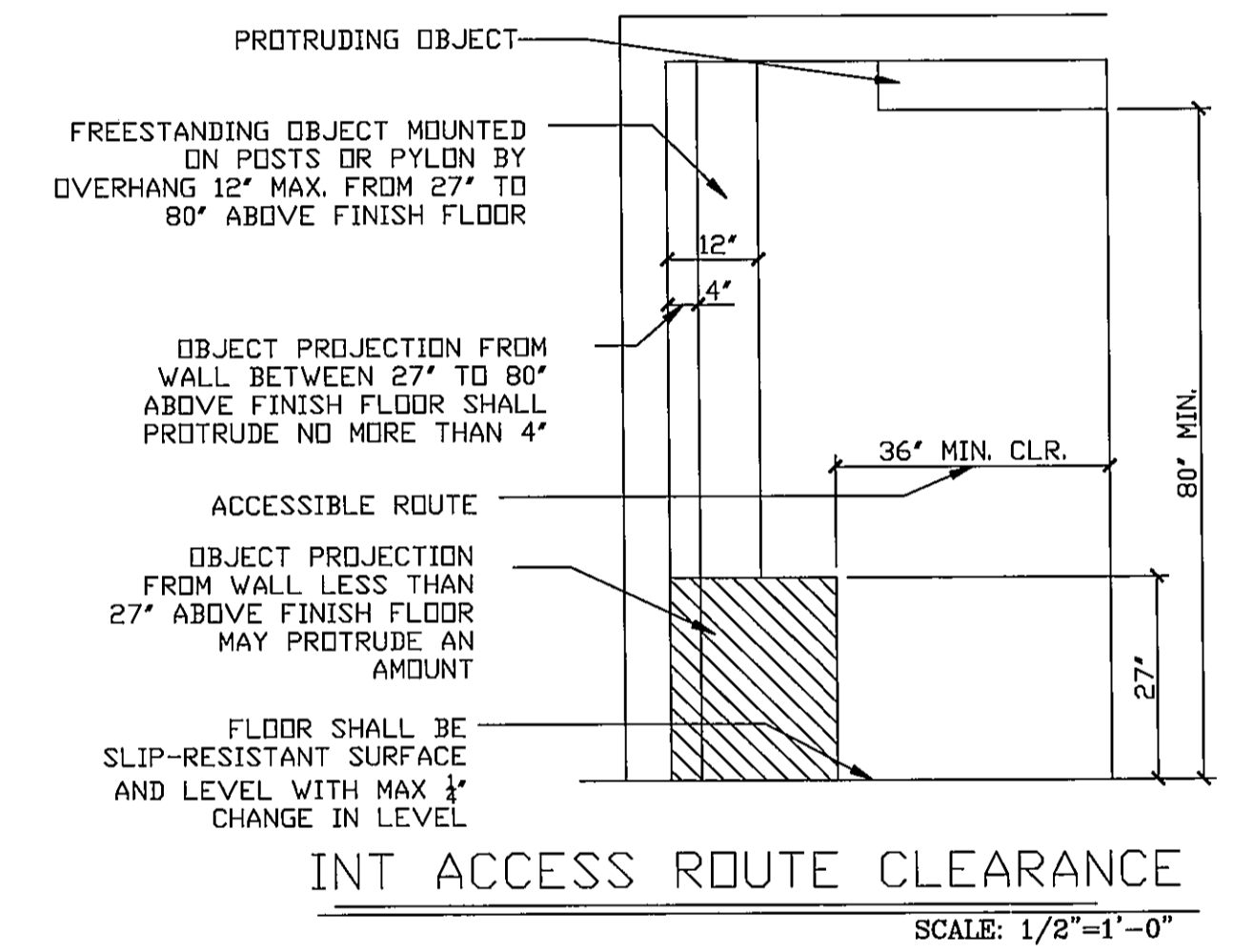
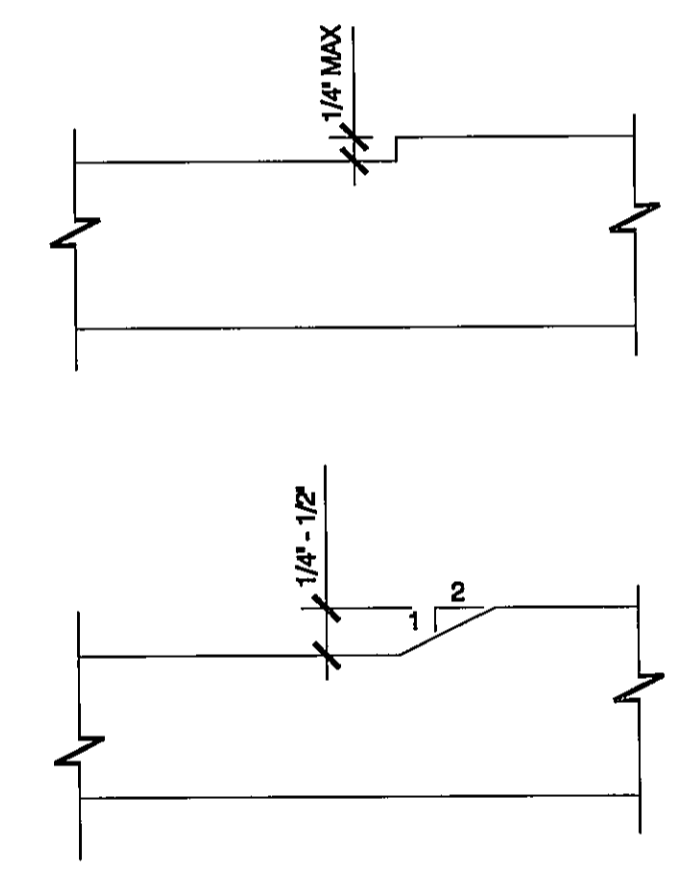
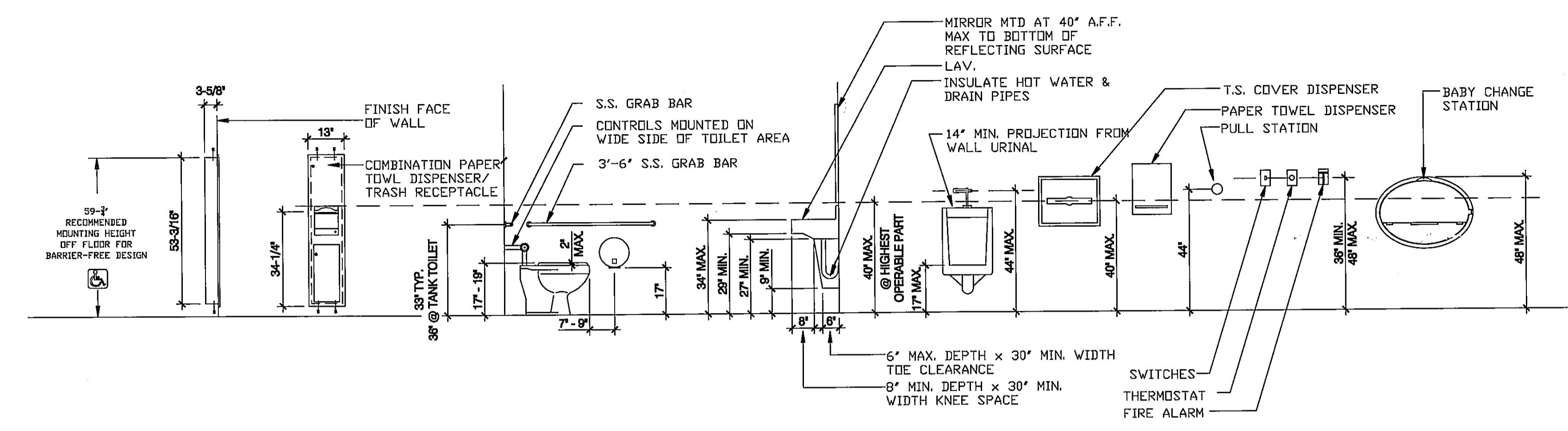
REVISIONS

ADDITION TO RICHARD R. CLARK SENIOR CENTER
LA PLATA, MARYLAND

R.L. LITTEN & ASSOCIATES, ARCHITECTS, LLC
300 CHARLES STREET, SUITE 4
P.O. BOX 1920, LAPLATA, MD 20646 (301) 934-1471

KL
RL
07-14-09
05-79

612



1. INDICATED DIMENSIONS, HEIGHTS, DEPTHS, AREAS AND OTHER GRAPHIC INFORMATION ARE PROVIDED AS MINIMUMS THAT MUST BE MAINTAINED. THESE MINIMUMS ARE BASED UPON ADA REQUIREMENTS.