

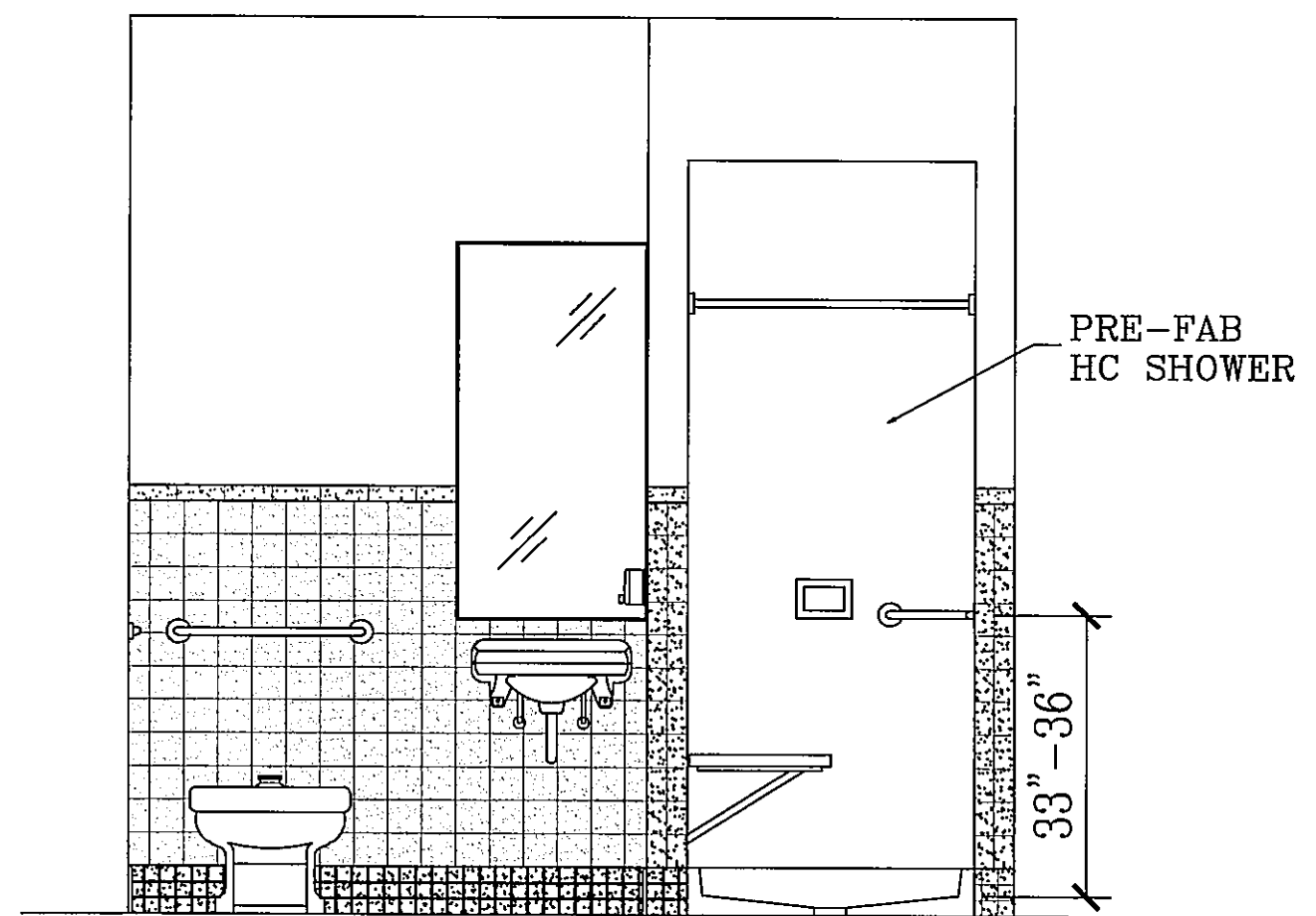
REVISIONS

ADDITION TO RICHARD R. CLARK SENIOR
CENTER
LA PLATA, MARYLAND

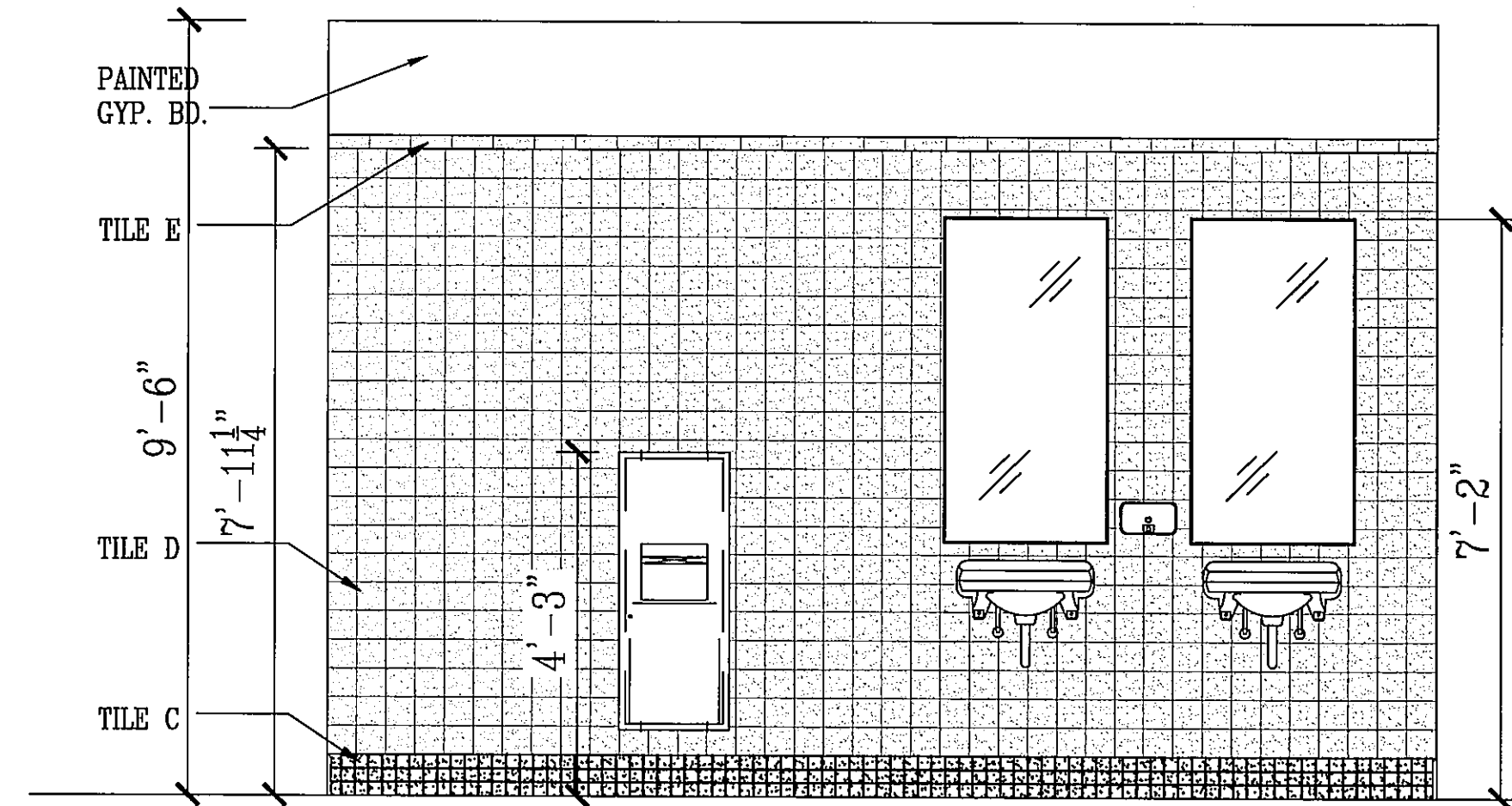
R.L. LITTEN & ASSOCIATES, ARCHITECTS, LLC
300 CHARLES STREET, SUITE 4
P.O. BOX 1920, LAPLATA, MD 20646 (301) 934-1471

RF
RE
07-14-09
05-79

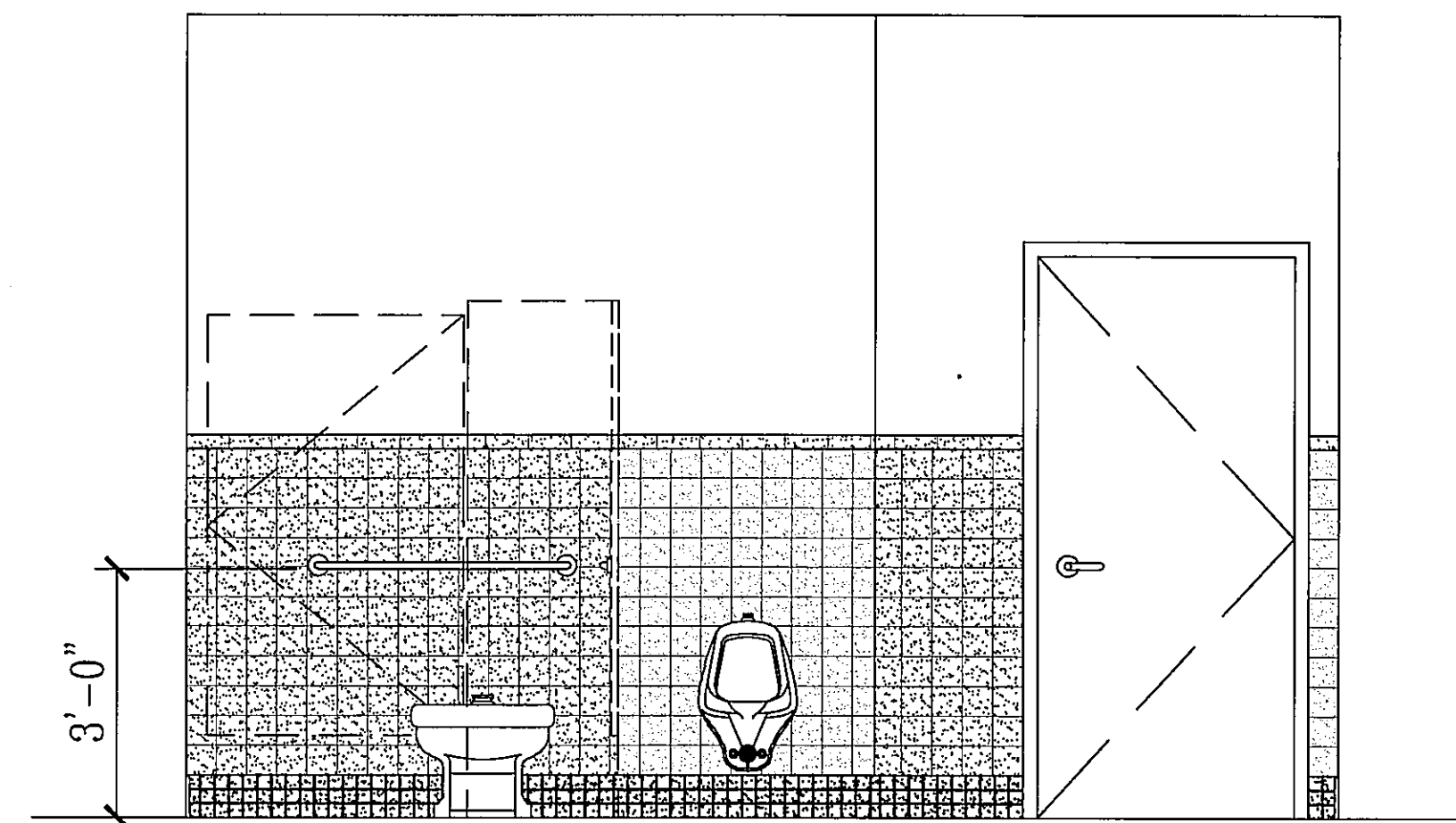
611



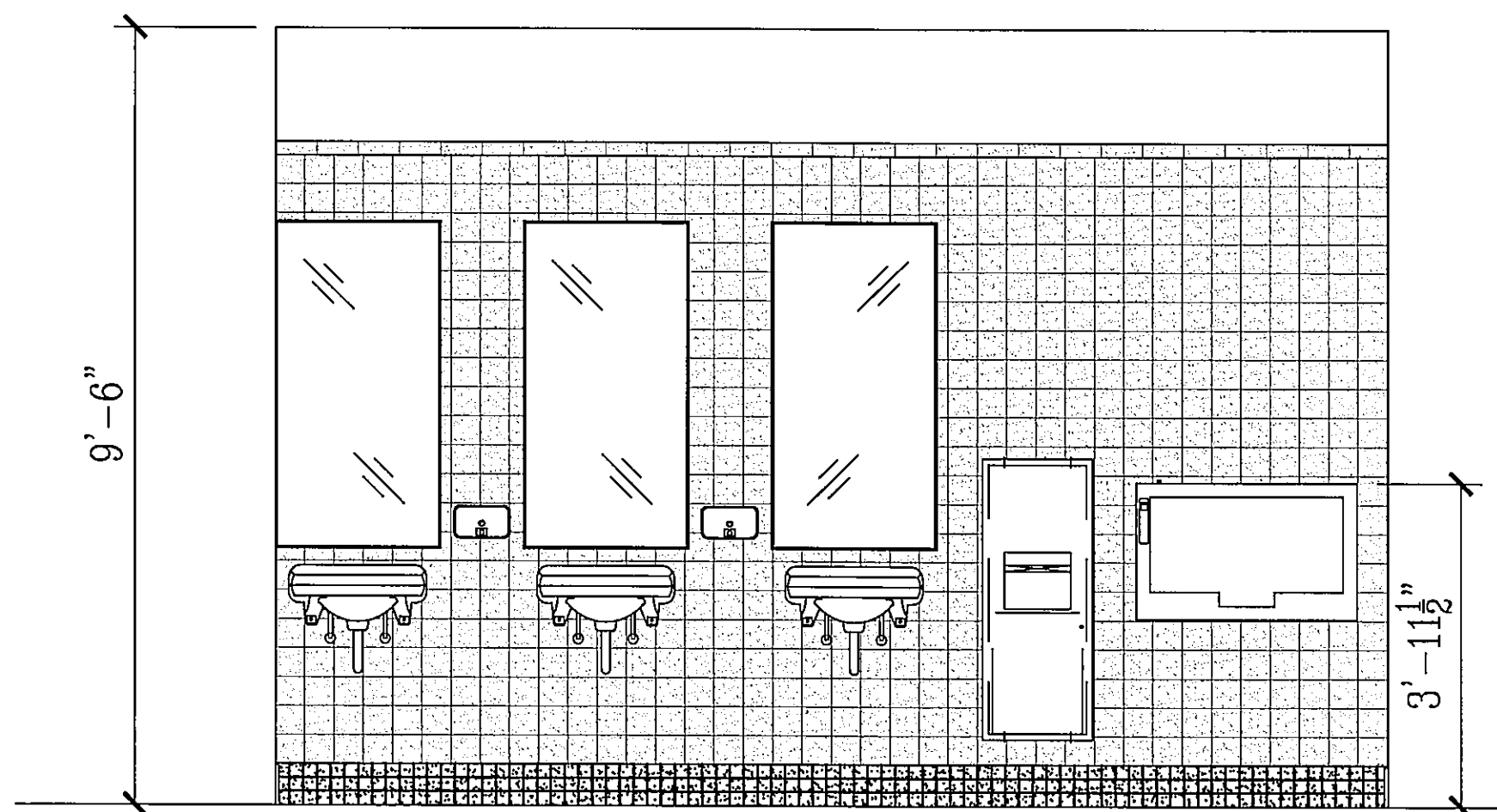
6 INTERIOR SIDE ELEVATION - RM. 220
1/8"=1'-0"



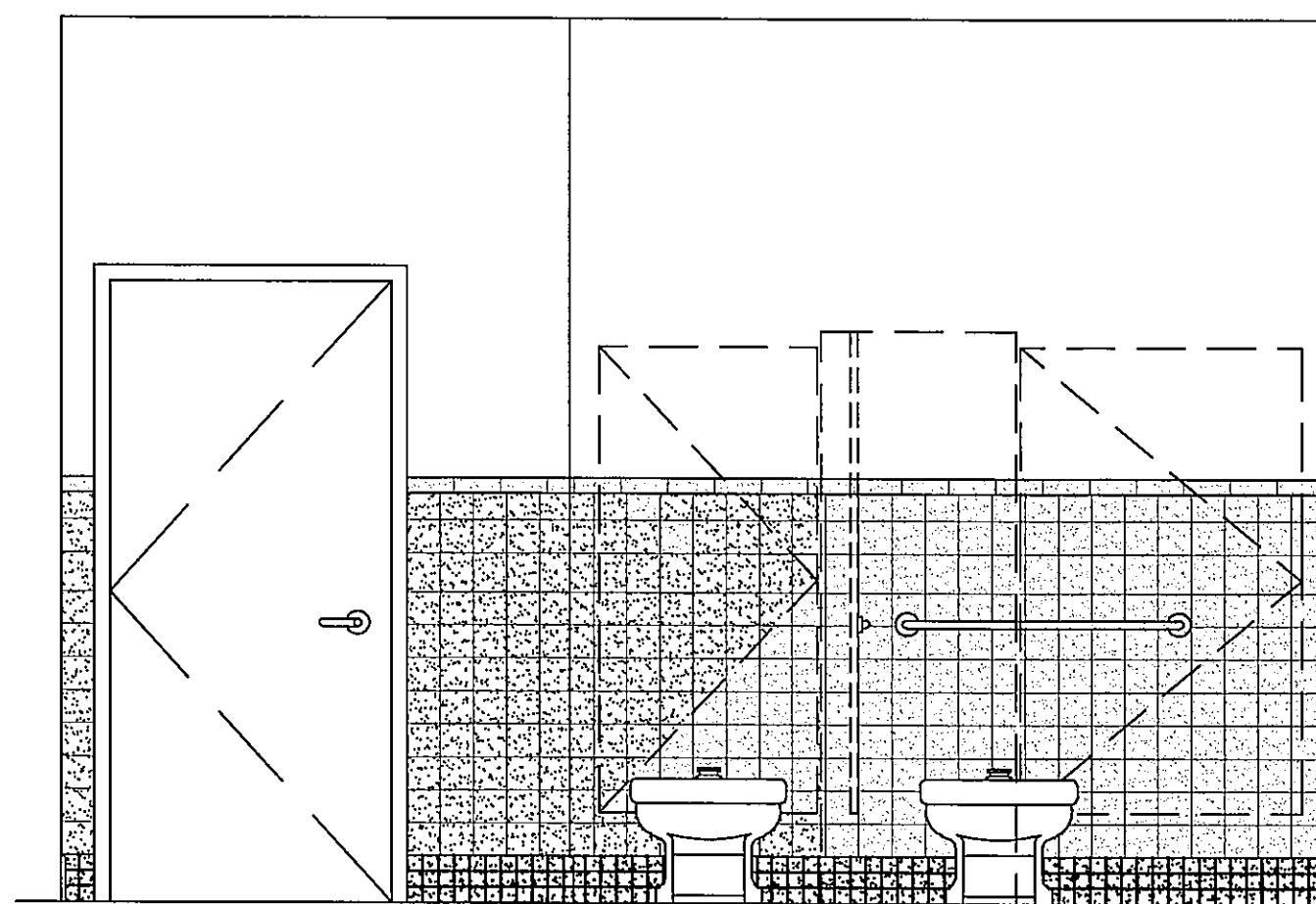
5 INTERIOR RIGHT SIDE ELEVATION - RM. 211
1/8"=1'-0"



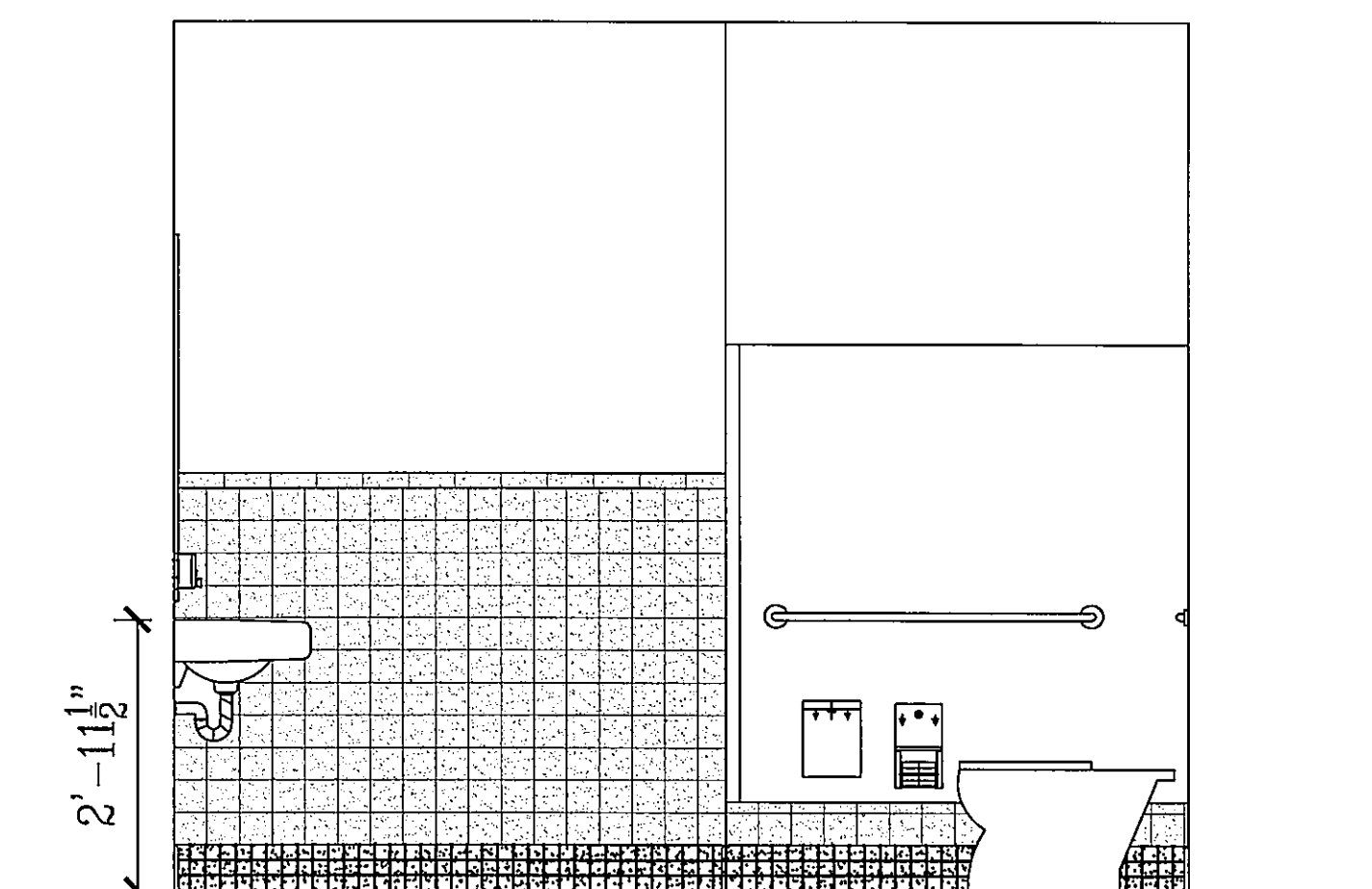
4 INTERIOR LEFT SIDE ELEVATION - RM. 211
1/8"=1'-0"



3 INTERIOR LEFT SIDE ELEVATION - RM. 212
1/8"=1'-0"



2 INTERIOR RIGHT SIDE ELEVATION - RM. 212
1/8"=1'-0"



1 INTERIOR FRONT ELEVATION - RM. 212
1/8"=1'-0"