

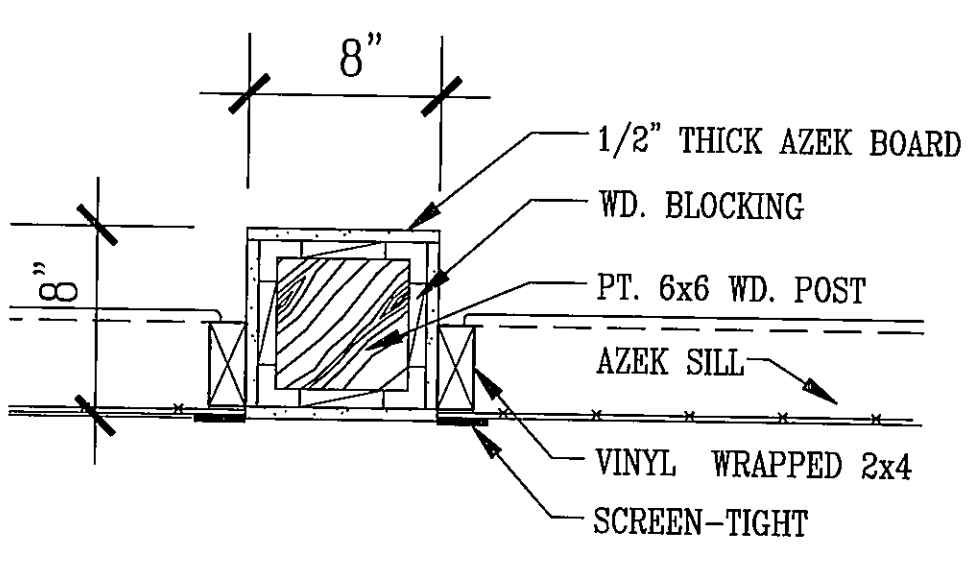
REVISIONS

ADDITION TO RICHARD R. CLARK SENIOR CENTER
LA PLATA, MARYLAND

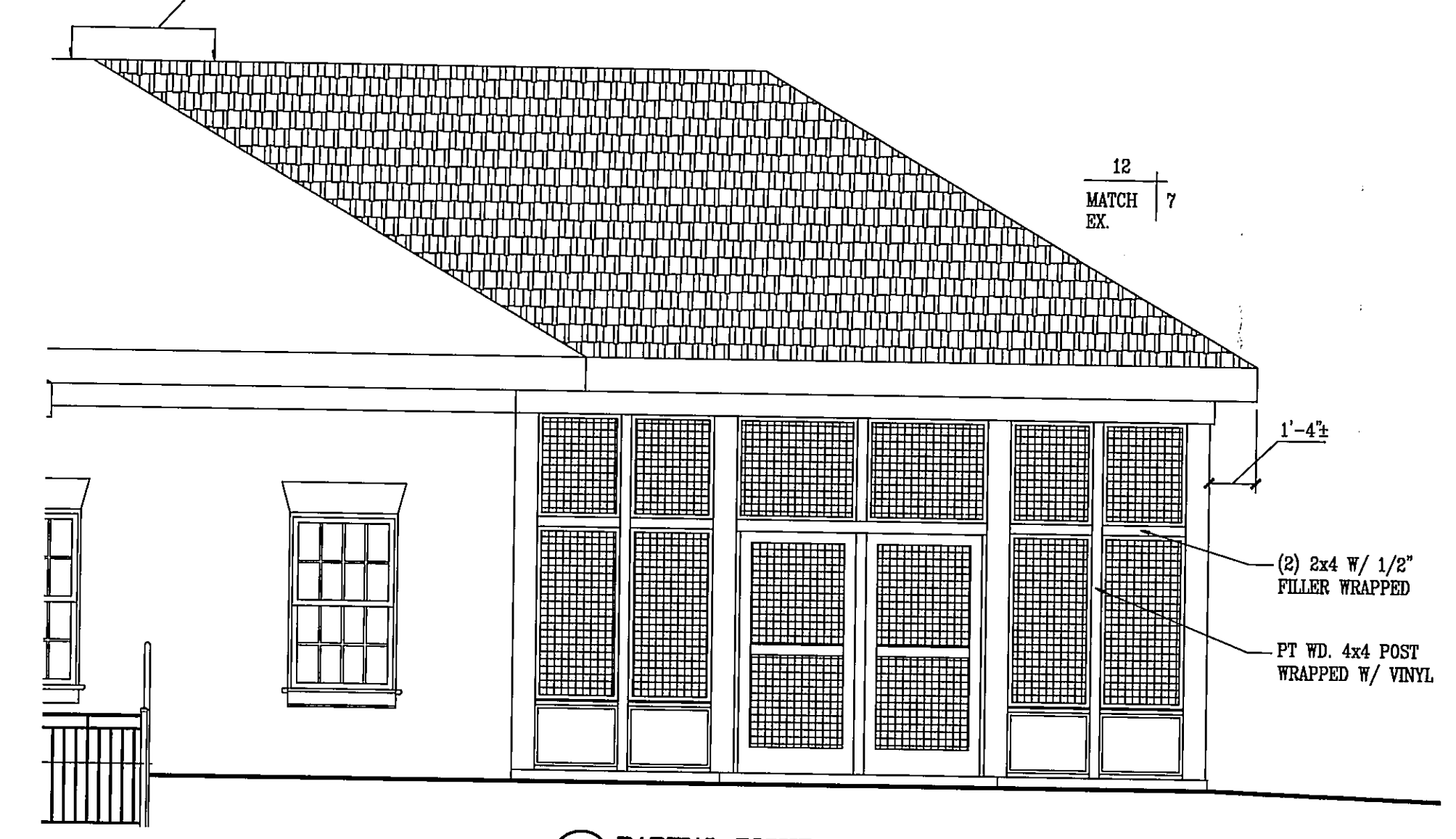
R.L. LITTEEN & ASSOCIATES, ARCHITECTS, LLC
300 CHARLES STREET, SUITE 4
P.O. BOX 1920, LAPLATA, MD 20646 (301) 934-1471

KL
RL
07-14-09
05-79

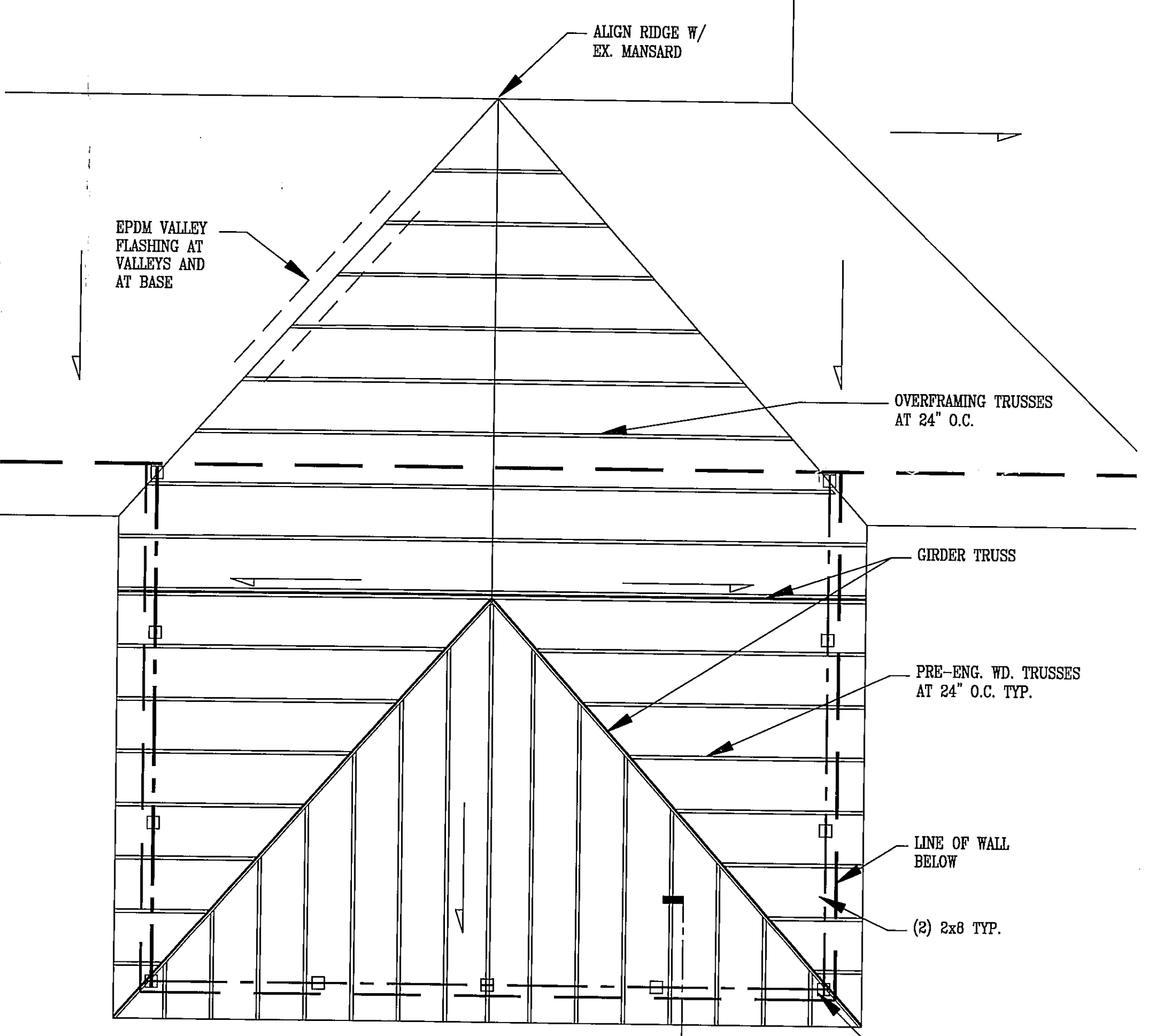
423



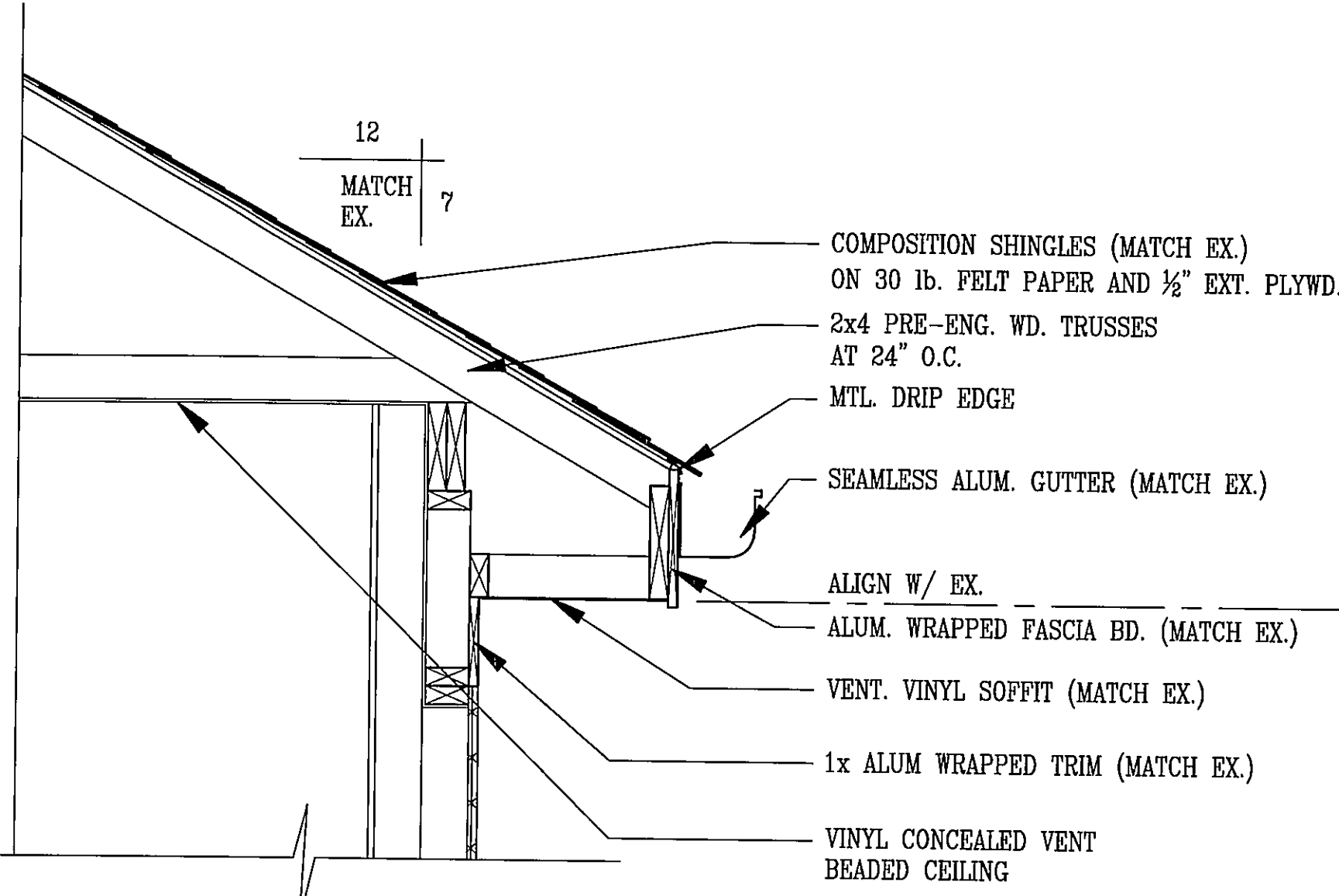
7 COLUMN DETAIL
1 1/2"-1'-0"



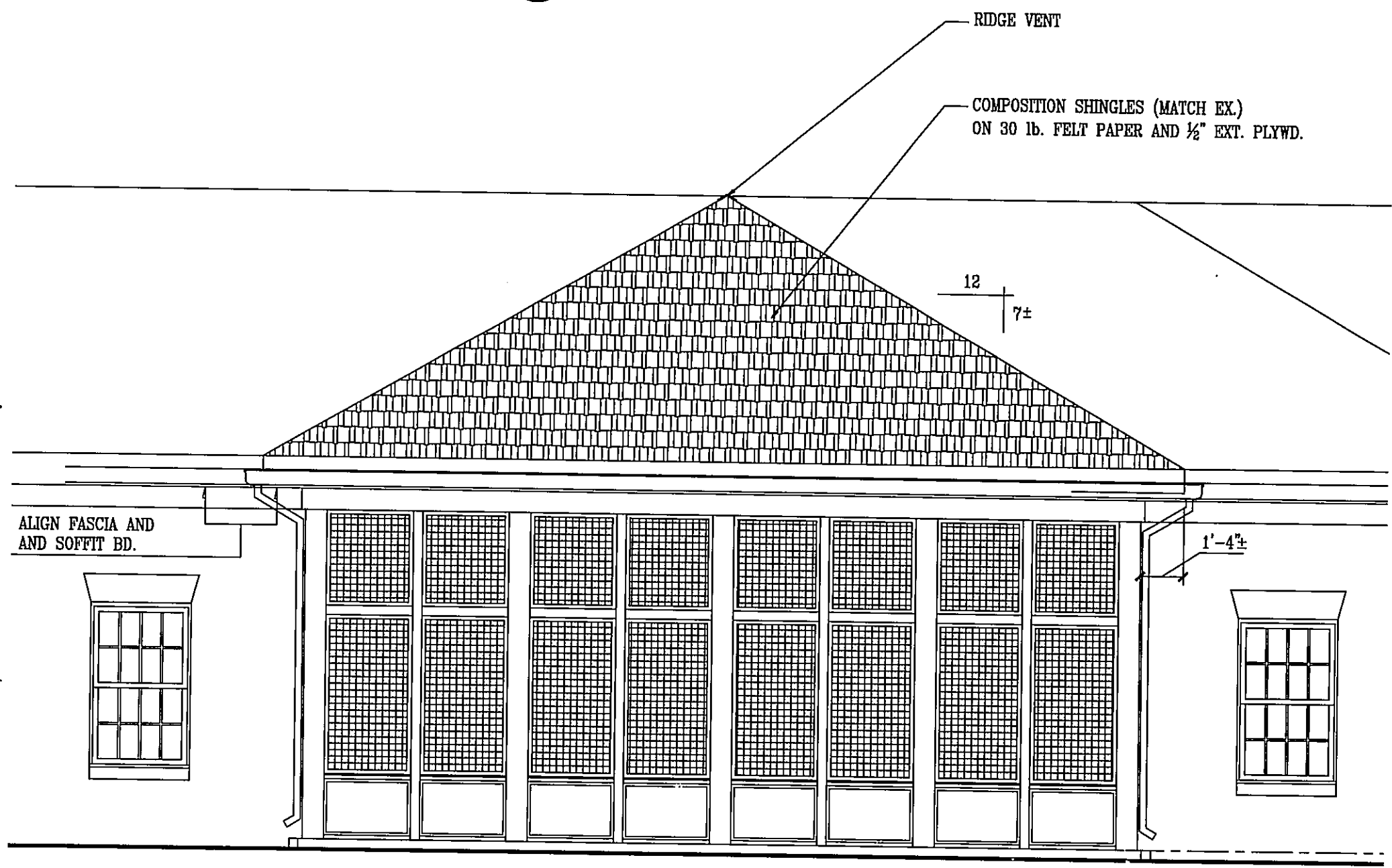
6 PARTIAL RIGHT SIDE ELEVATION
1/4"-1'-0"



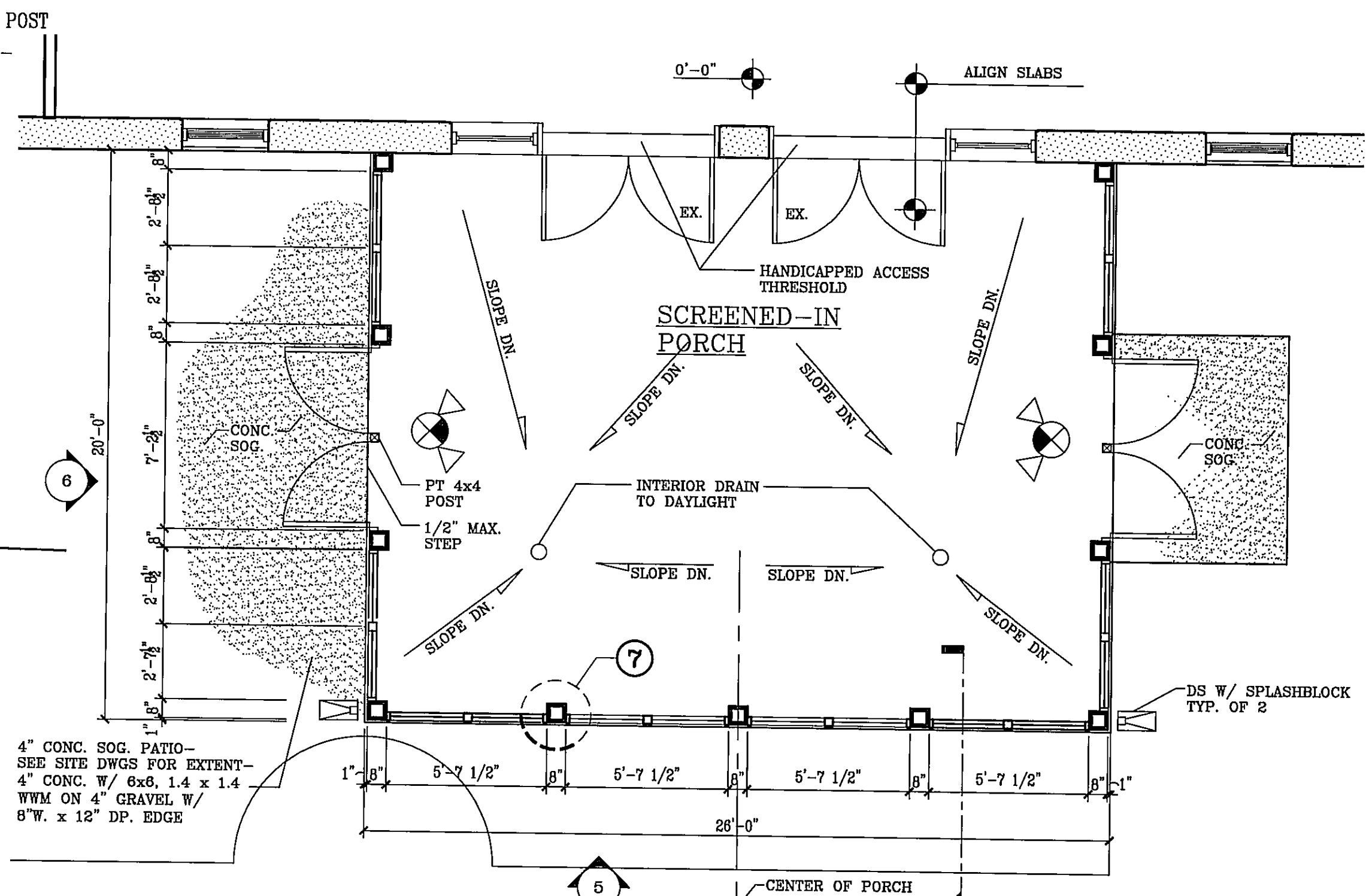
4 ROOF FRAMING PLAN
1/4"-1'-0"



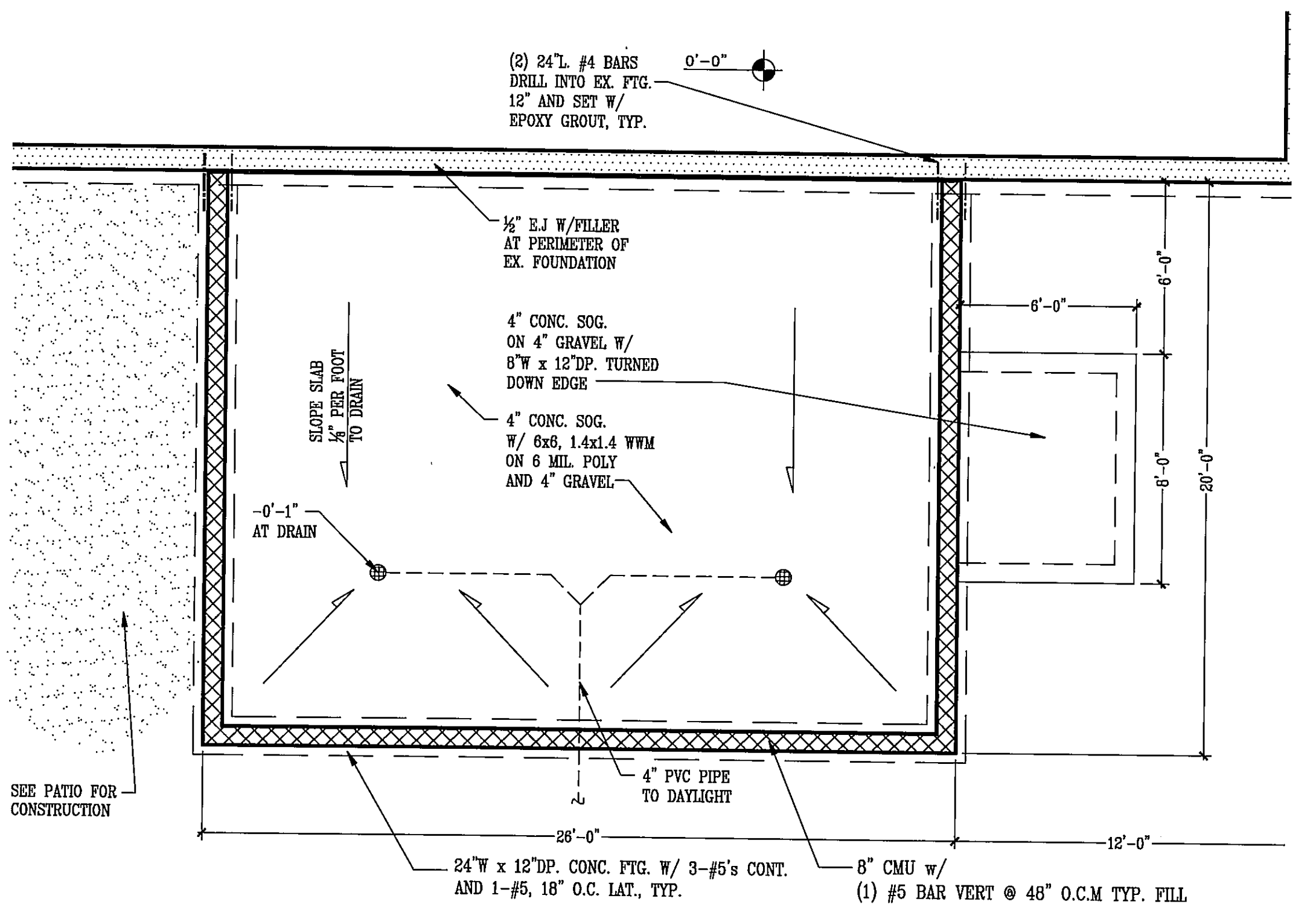
3 WALL SECTION
1"-1'-0"



5 PARTIAL REAR ELEVATION
1/4"-1'-0"



2 PARTIAL FLOOR PLAN
1/4"-1'-0"



1 FOUNDATION PLAN
1/4"-1'-0"