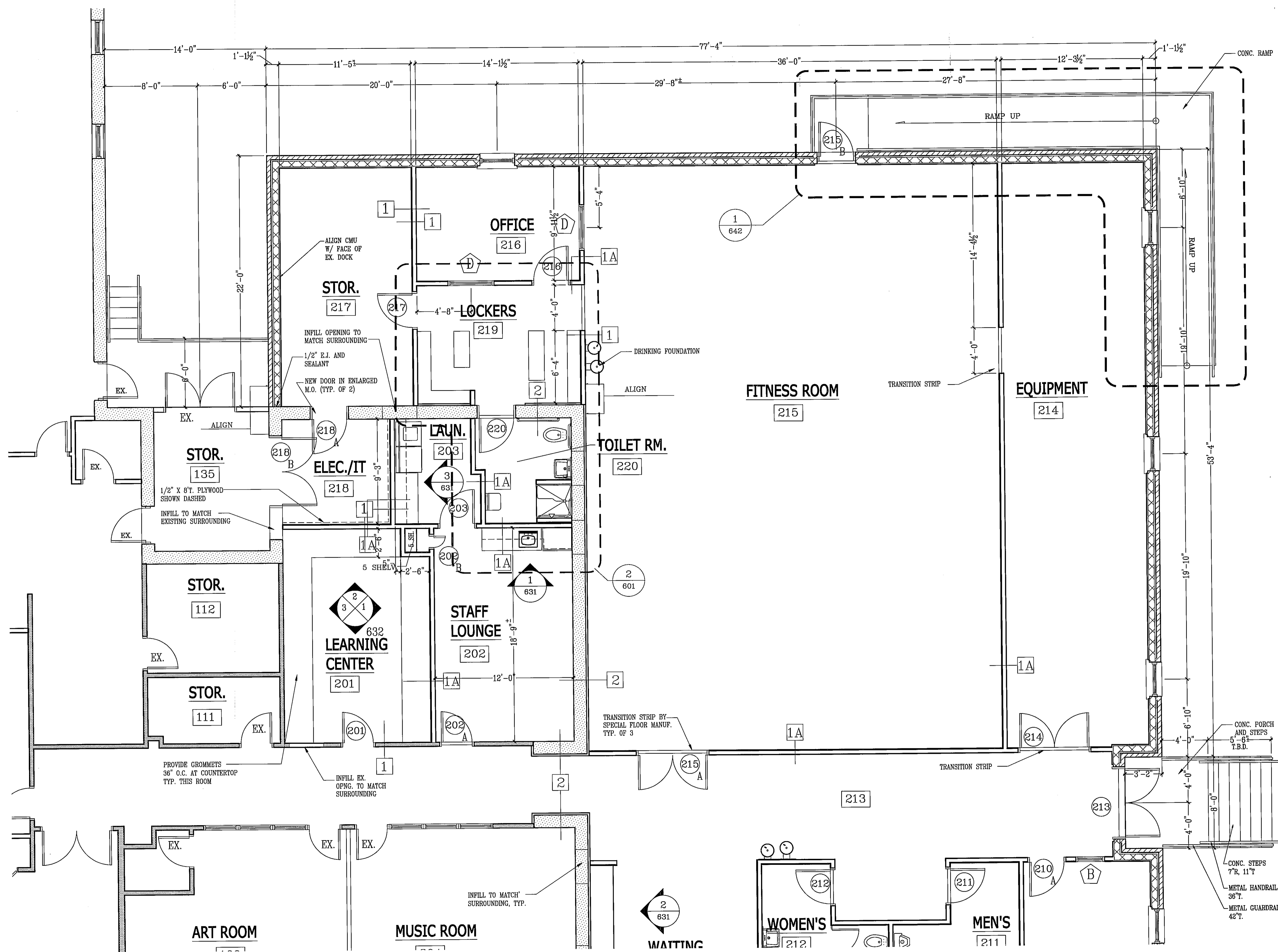


REVISIONS



ADDITION TO RICHARD R. CLARK SENIOR
 CENTER
 LA PLATA, MARYLAND

R.L. LITTEN & ASSOCIATES, ARCHITECTS, LLC
 300 CHARLES STREET, SUITE 4
 P.O. BOX 1920, LAPLATA, MD 20646 (301) 934-1471

1 PARTIAL FLOOR PLAN
 1/4"=1'-0"

SEE DWG. 421
 FOR PARTITION SCHEDULE

KL
RL
07-14-09
05-79
422