

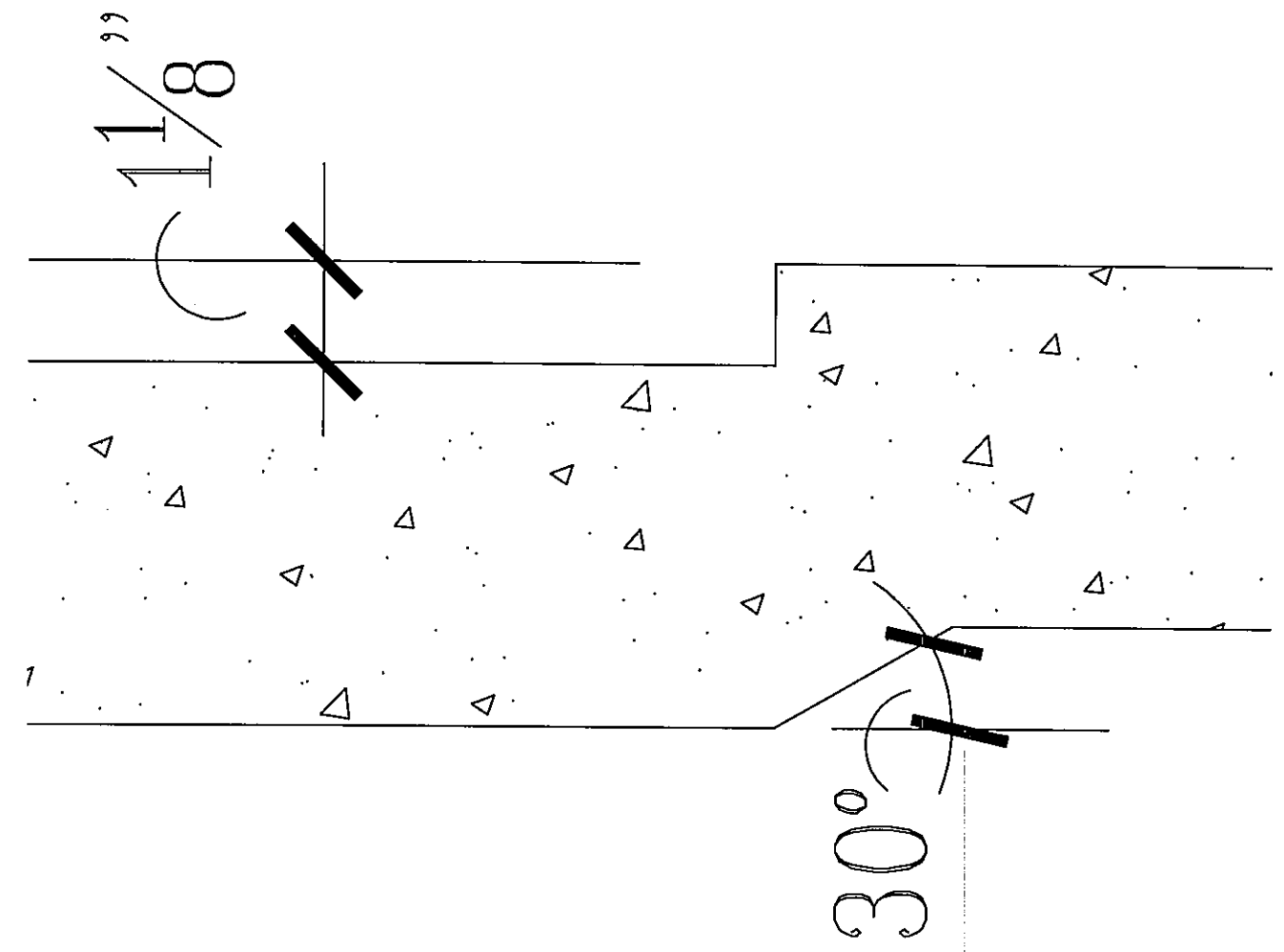
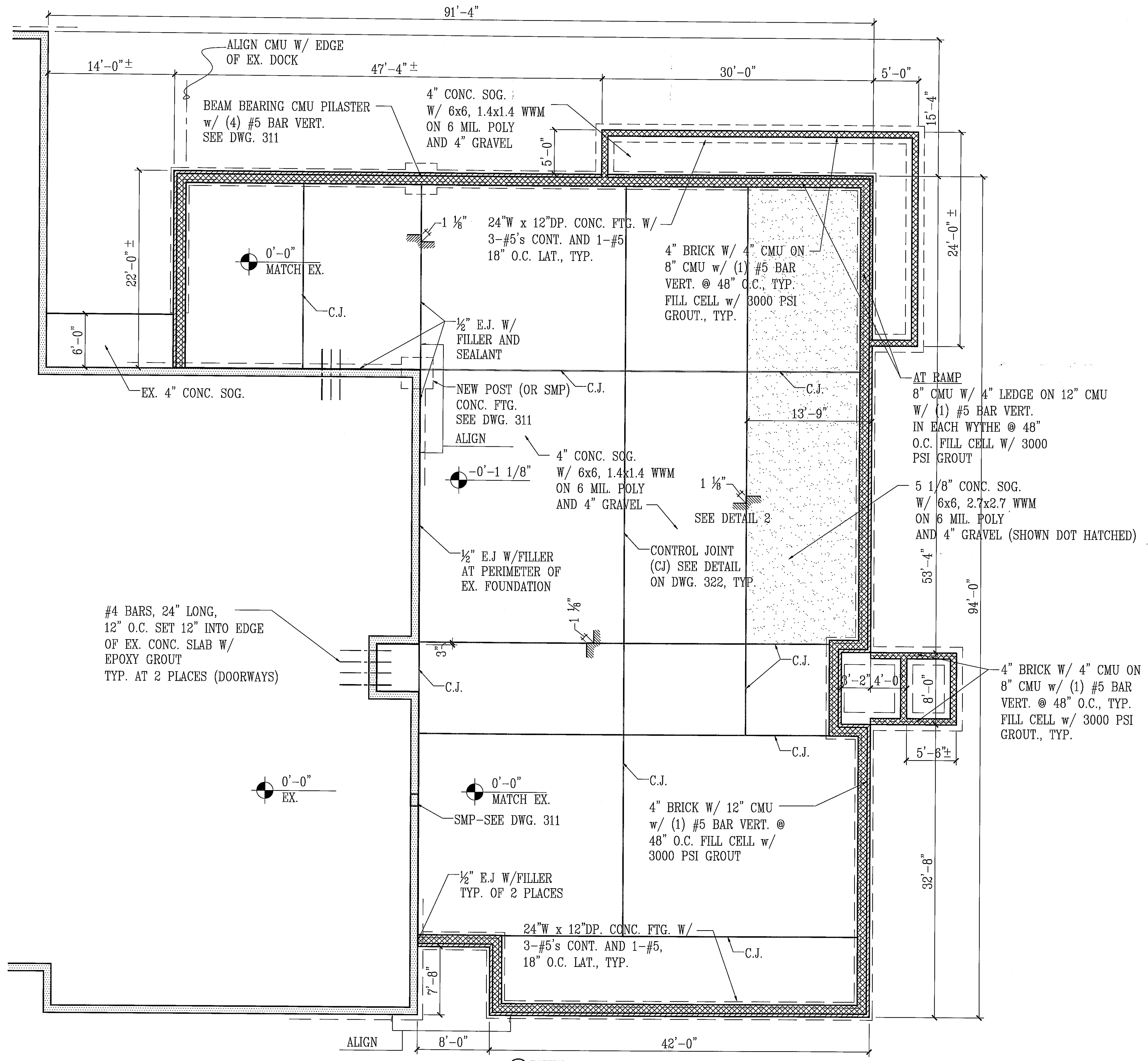
REVISIONS

ADDITION TO RICHARD R. CLARK SENIOR CENTER  
LA PLATA, MARYLAND

R.L. LITTEN & ASSOCIATES, ARCHITECTS, LLC  
300 CHARLES STREET, SUITE 4  
P.O. BOX 1920, LAPLATA, MD 20646 (301) 934-1471

KL
RL
07-14-09
05-79

301



2 SOG. DETAIL  
6'-1'-0"

1 PARTIAL FOUNDATION PLAN  
5/16'-1'-0"