

SEAL:

Professional Certification

I hereby certify that I am a duly Licensed Professional Engineer in the State of Maryland and that I am the author of the design and construction documents herein.

CONSULTANTS:

STRUCTURAL ENGINEER:
 THE WATKINS PARTNERSHIP, INC.
 SUITE 202, 3033 MITCHELLVILLE ROAD
 BOWIE, MD 20716
 (410) 741-1719
 FAX NO. (301) 248-9974

MECHANICAL/ELECTRICAL ENGINEER:
 SCHREIBER P/E & ASSOCIATES, INC.
 3101 WYOMING AVENUE
 THUNDERBOLT, MD 20783
 (410) 581-1327
 FAX NO. (410) 581-1444

PROJECT:

GREENVIEW KNOLLS
 ELEMENTARY SCHOOL
 VESTIBULE & OFFICE
 RENOVATIONS;
 ADMINISTRATIVE SUITE

4571 MILITARY LANE
 GREAT MILLS, MD 20634

REVISIONS:

BID
 DOCUMENTS

TITLE:

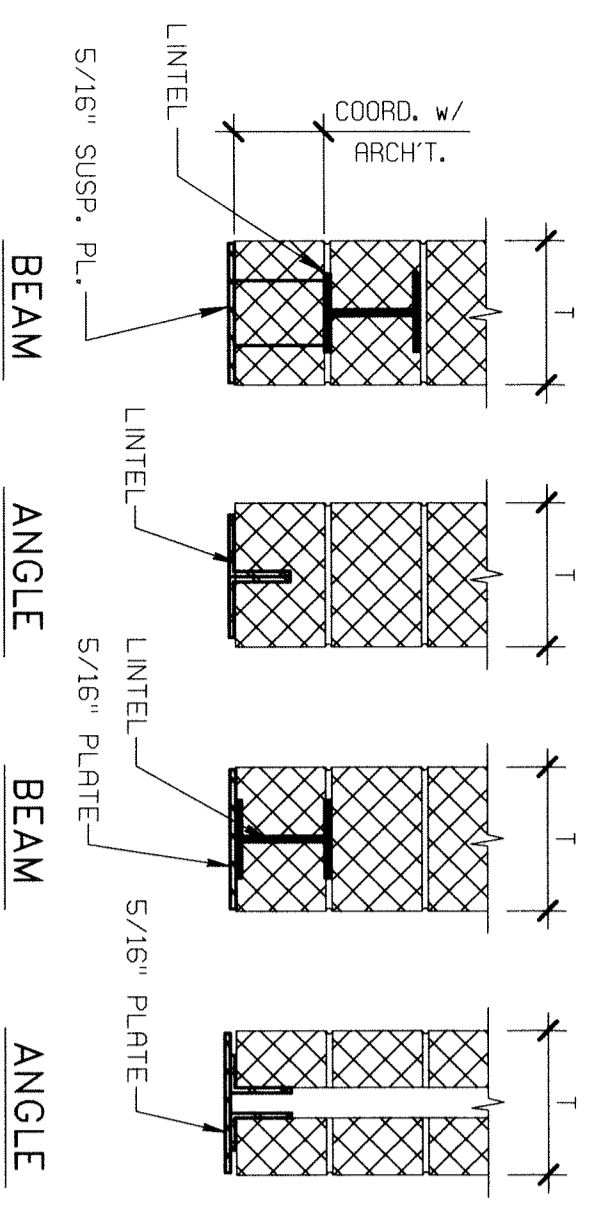
TYPICAL DETAILS

DATE: 01.05.09

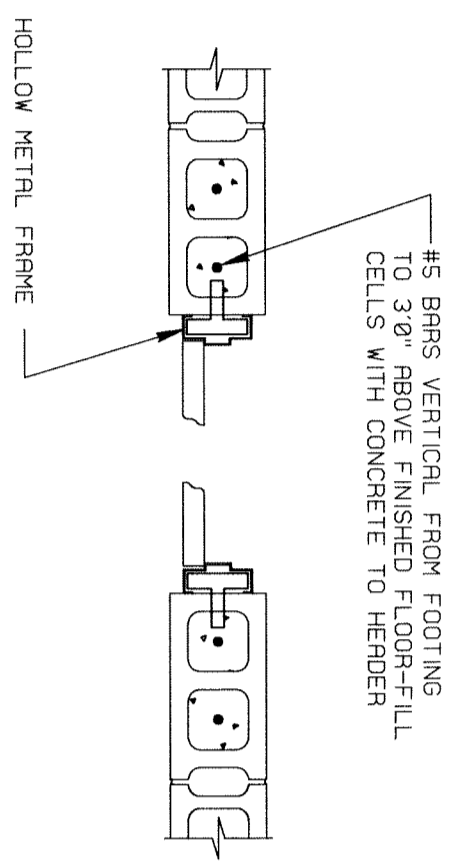
JOB NO.: 28101.08

SHEET NO.

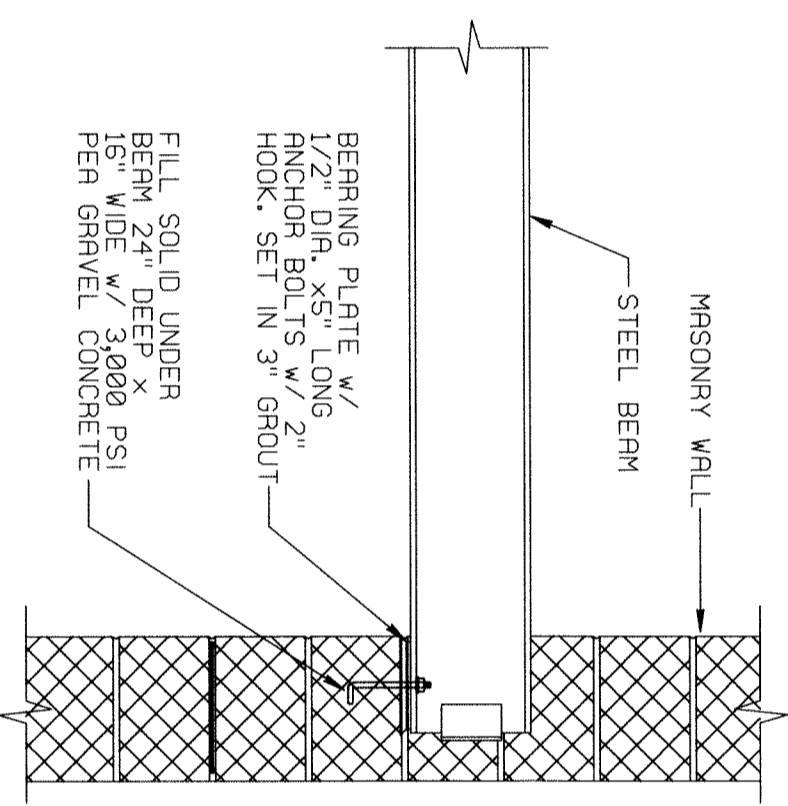
S302



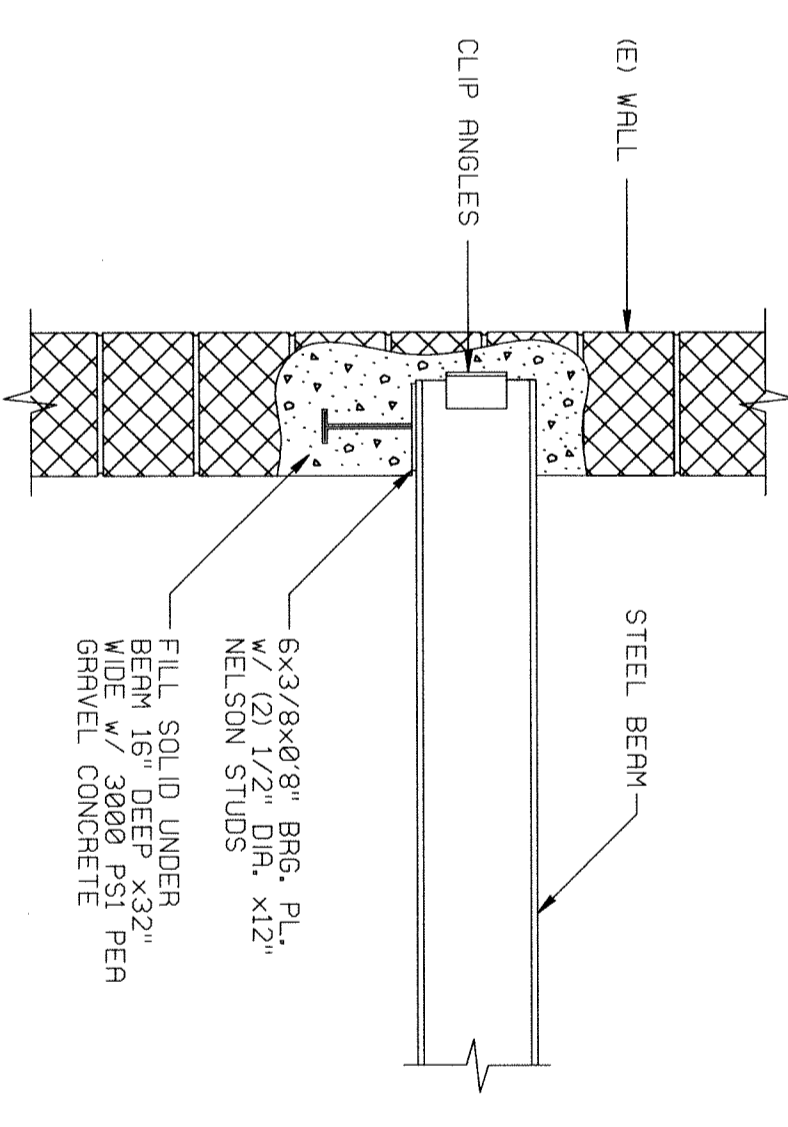
D31a LINTEL DETAILS
 DET



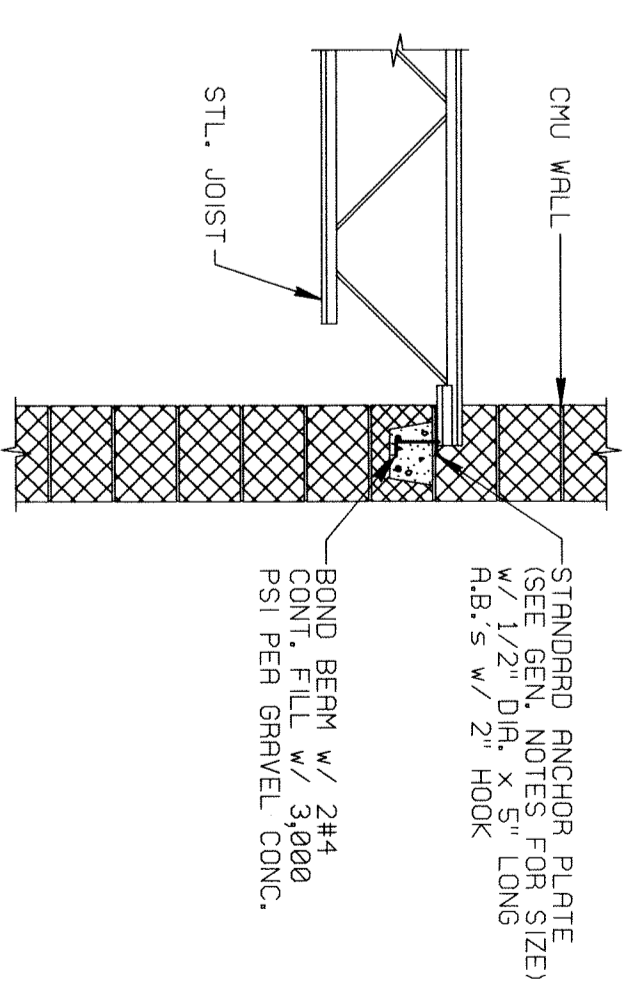
D31f TYPICAL OPENING REINFORCING
 DET



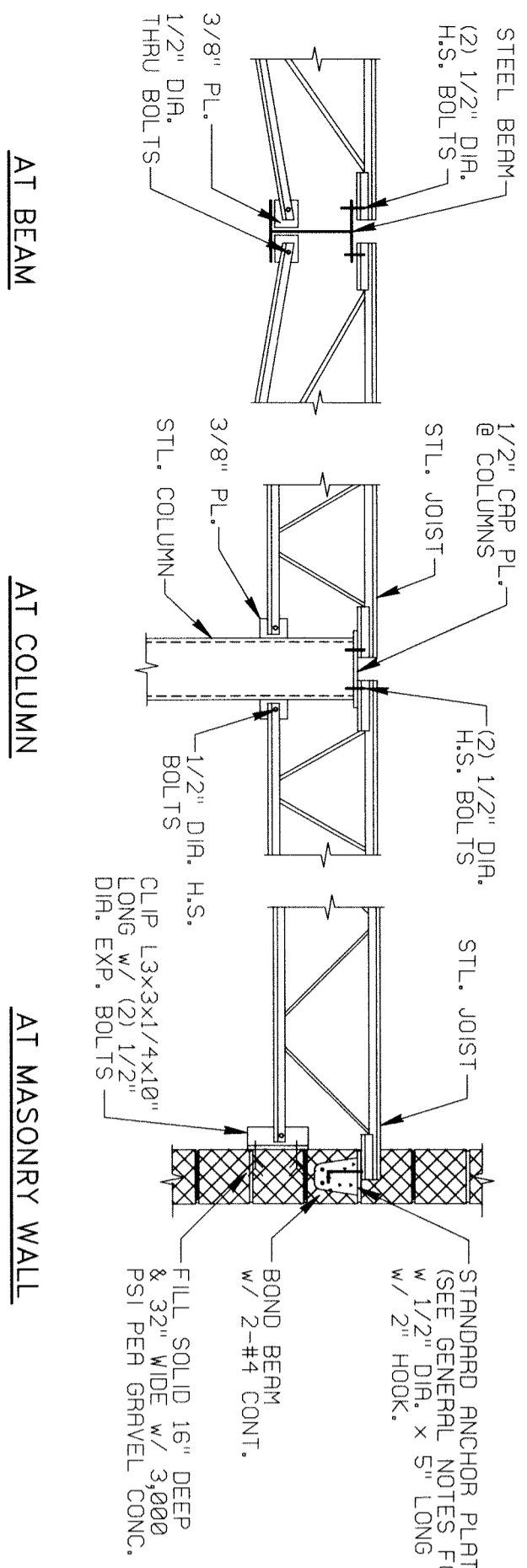
D40a BEAM BEARING @ MASONRY WALL
 DET



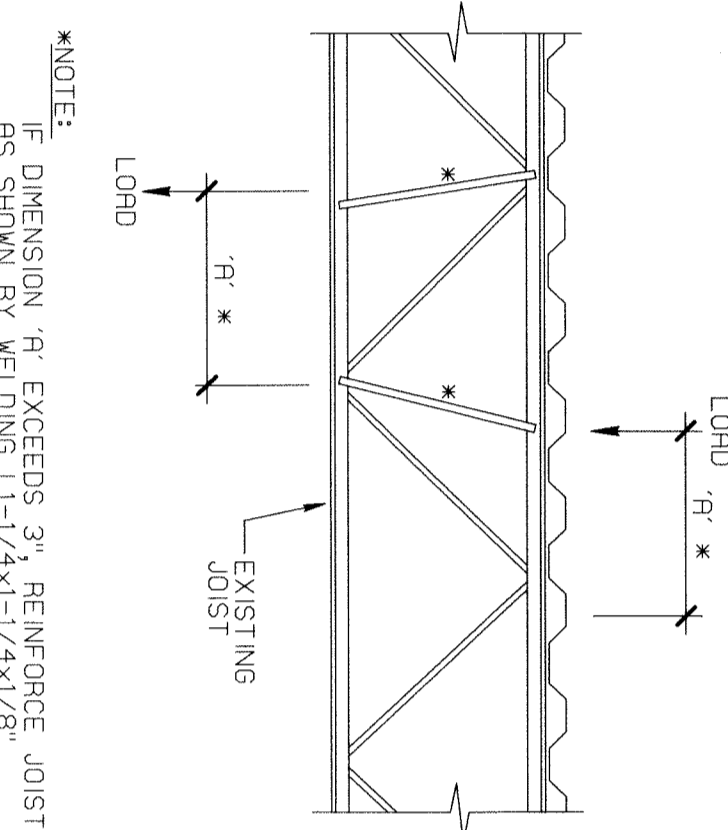
D41 BEAM BEARING EXISTING CMU WALL
 DET



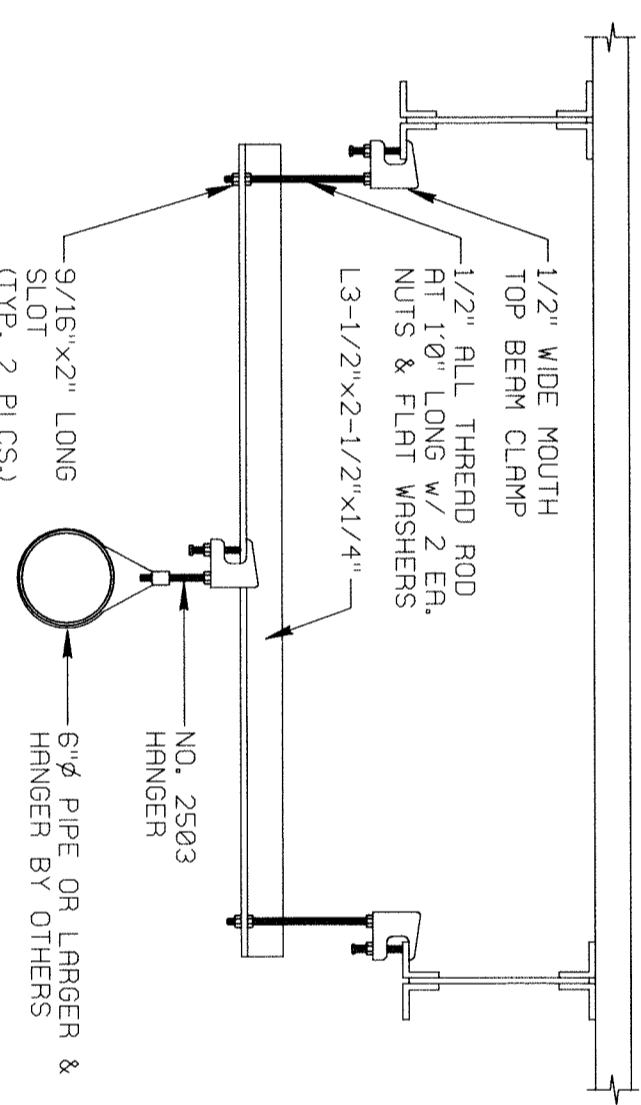
D45 JOIST BEARING @ BOND BEAM
 DET



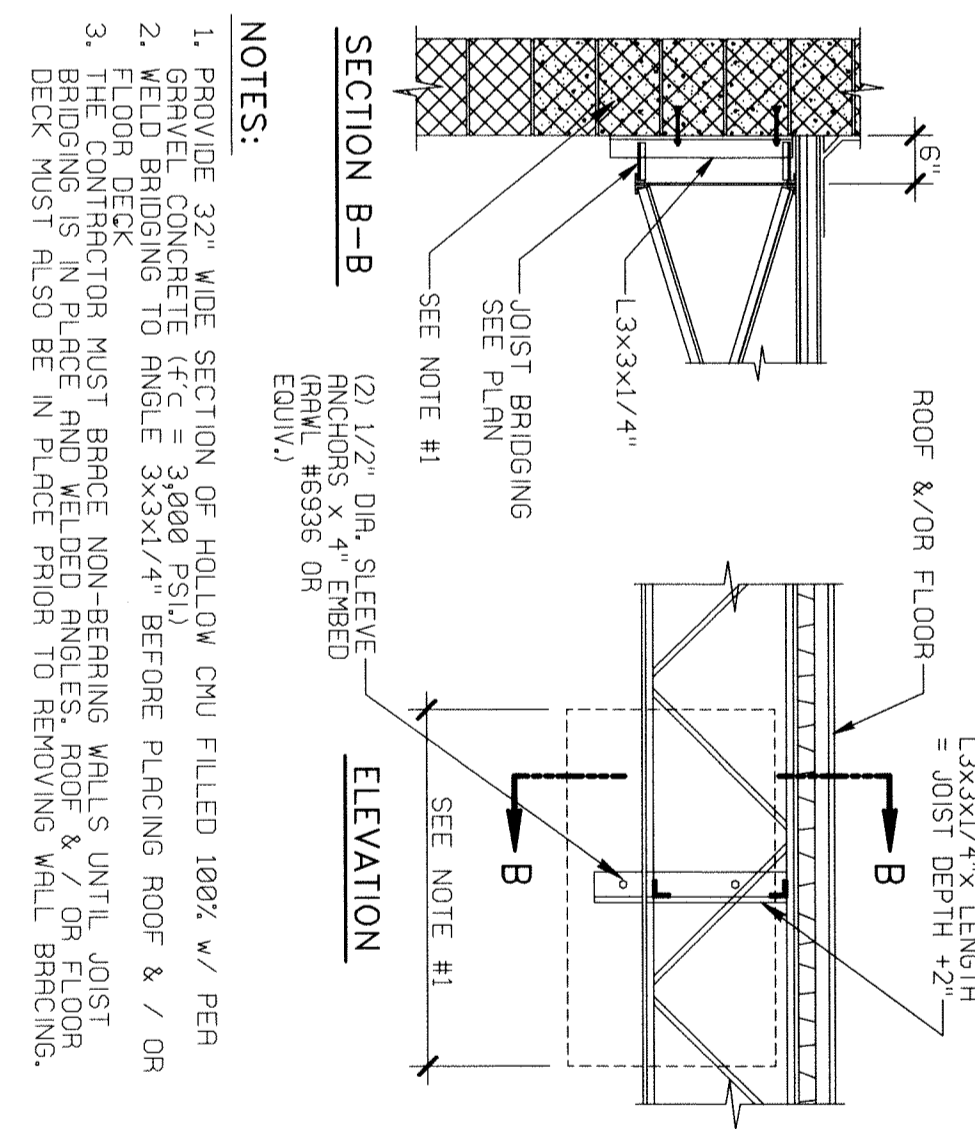
D48 SPECIAL JOIST DETAILS
 DET



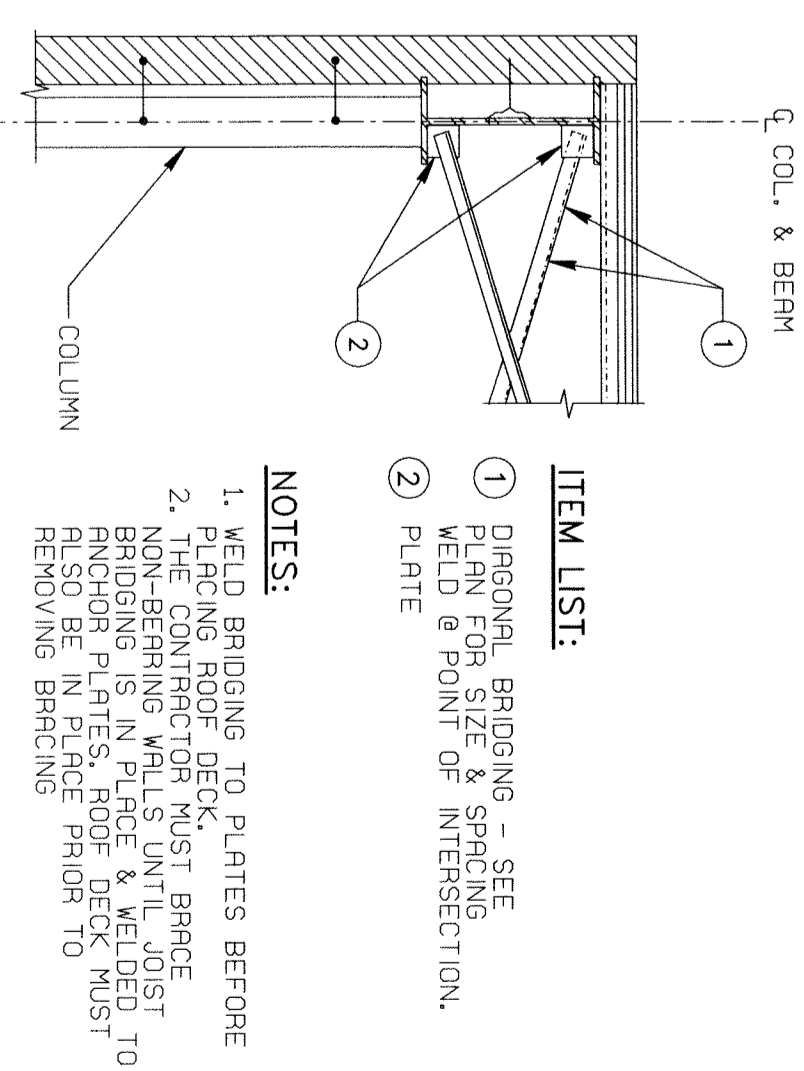
D54a TYPICAL JOIST REINFORCING DETAIL
 DET



D58 TYPICAL PIPE HANGER DETAIL
 DET



D60a BRIDGING ANCHORAGE DETAIL
 DET



D60b BRIDGING ANCHORAGE DETAIL
 DET

WATKINS
 2027 Mitchellville Road
 Suite 202
 Bowie, Maryland 20716
 Phone: (410) 741-1719
 Fax: (301) 248-9974
 www.watkins-partnership.com
 PROJECT # 20083002