

ST. MARYS COUNTY PUBLIC SCHOOLS

**SECURITY VESTIBULE
GREENVIEW KNOLLS ELEMENTARY SCHOOL**

ADDENDUM NO. ONE

MAY 6, 2009

To Bidders:

This Addendum No. One is hereby made apart of the contract documents on which the contract will be based, and is issued to modify, explain and/or correct the original contract documents. Please attach this addendum to your contract documents and submit bids and be otherwise governed accordingly. Receipt of this Addendum must be acknowledged on the Bid Form.

CHANGES TO PROJECT DRAWINGS:

1. These revised Drawings address dimensional discrepancies, provide additional detail for some of the proposed structural framing at the entrance canopy, and are included for clarification in reference to specific questions. Please replace the following Drawings with the attached revised Drawing sheets. The new drawings are clouded with Revision #1, and are dated May 6, 2009:
 - a. **A601 – Schedules**
 - b. **S101 – Partial New Foundation & Roof Framing Plan, Section & Schedules**
 - c. **S201 – Sections**
 - d. **S401 – General Notes and Details**

2. The following sketches clarify specific questions or discrepancies, and replace the details noted. The details are clouded with Revision #1, and are dated May 6, 2009:
 - a. **A7/A121 – New Roof Plan**
 - b. **C3/A502 – Section Detail over Storefront Entry**

CLARIFICATIONS RELATING TO THE BID DOCUMENTS:

The following is a list of a point by point response to the RFI's submitted for the construction of the above referenced project, as well as additional clarification information:

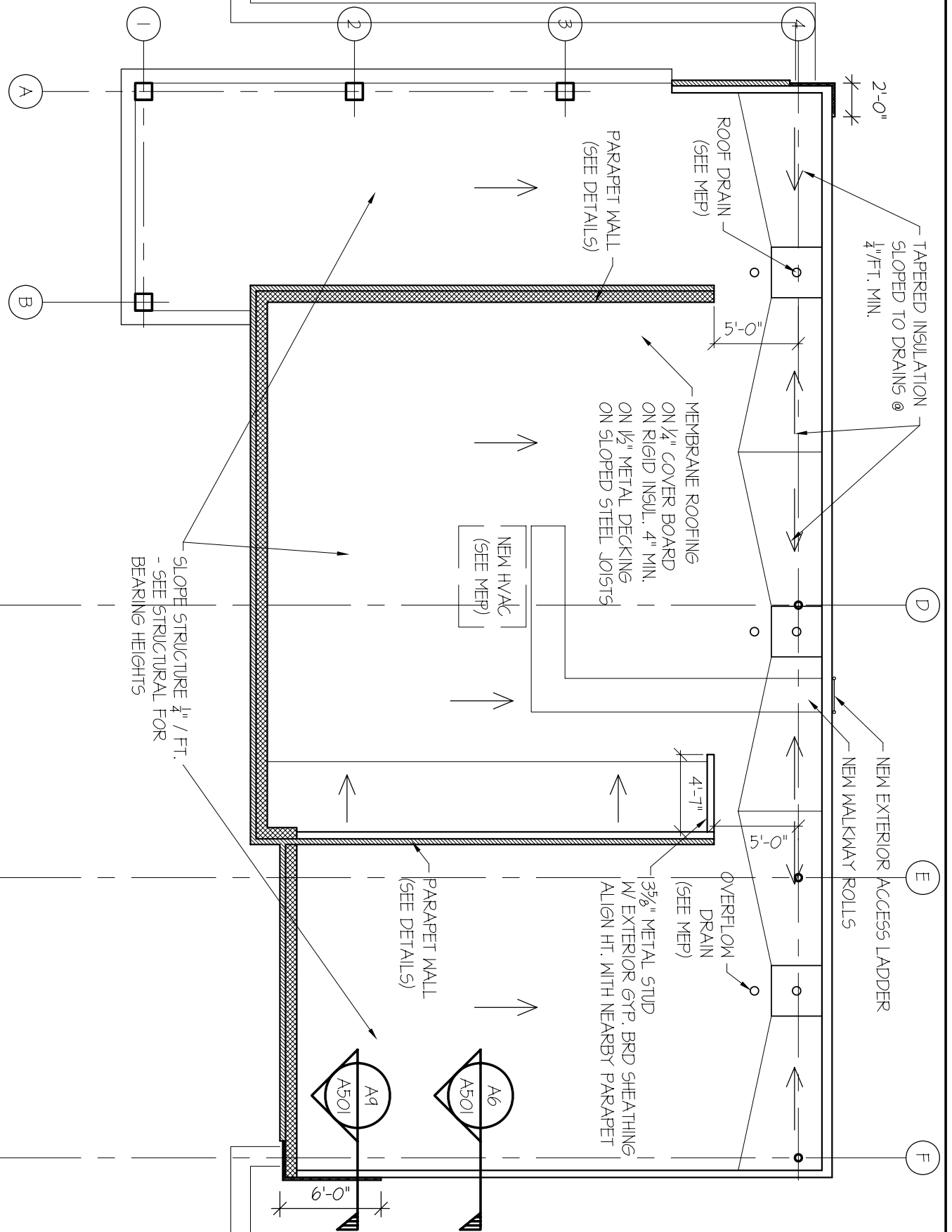
- A. C1/A201 and F1/A201 show note J as new painted EIFS infill, while A1/A201 shows a cut with facebrick; which is correct?
C1/A201 and F1/A201 correctly depict EIFS in the locations shown. The detail referenced in A1/A201 is shown incorrectly – facebrick is not present at this location. Details A8/A501 and A9/A501 correctly display the condition of the parapet wall depicted in this section. The revised roof plan (A7/A121 included with Addendum #1) shows the extent to which the EIFS wraps the corner of the parapet wall.
- B. A1/A201 references a cut A6/A501 that is not in the Drawings. Does this cut exist?
This callout should reference Detail A9/A501.
- C. F8/A201 shows parapet walls stopping at Column Line 3, while A7/A121 roof drawings shows parapet walls stopping between Column Line 3 & 4?
Please see revised roof plan A7/A121 included with Addendum #1 for the correct location of the parapet wall.
- D. Storefront window SF-2 is shown per schedule as being elevated 8" AFF, but no sill detail is supplied. Is the sill masonry or metal?

Please see attached revised storefront elevations on attached Sheet A601. The bottom rail is now 4.5" (part of the storefront system).

- E. Please advise as to what is the strip in the facebrick above window W-4 in cut C1/A201?
Please ignore the strip in the facebrick above window W-4 in cut C1/A201. This wall should consist of only facebrick and EIFS, along with window W-4 (see Sheet A601 included with Addendum #1 for revised dimensions of W-4).
- F. Door frames and Doors are not compatible – the depth of the door plus the silencer does not match the frame?
The door thicknesses are correct as scheduled. Please provide frames with a 2" depth on either side of the stop, and stop dimension as necessary to fit the partition type in which the frame is installed. Please see revised frame details on Sheet A601, included with Addendum #1.
- G. Note 2 on the Finish schedule needs clarification – it states that all wood, plywood, OSB, particle board, and wood blocking is to be fire treated. We assume this does not actually include the finish wood products such as casework, cabinetry, and doors?
Correct. Finish wood products such as casework, cabinetry, and doors are not required to be fire-treated.
- H. Does the building contain Johnson controls?
Greenville Knolls has equipment with a JCI NCM350, and is still locally controlled mainly with a pneumatic system (JCI 8510 RC).
- I. Where is window W-2 located?
W-2 not used – please see revised A601, included with Addendum #1.
- J. Specs ask for clear anodized finish on storefront but ask for painted on aluminum windows. Please confirm?
Finish on storefront and aluminum windows is to be clear anodized.
- K. Storefront Elevations on Sheet A601 say aluminum storefront but the schedule asks for HM frames, steel, and wood doors. Which is intended to be aluminum? Steel? Wood? Please clarify schedule?
Please see revised A601, included with Addendum #1.
- L. Do we include the relocation of the sound and clock systems in the Base Bid or in the Add Alternate?
The relocation of the sound and clock systems is to be included in the Base Bid.
- M. There are discrepancies between the dimensions for the column grid shown on Sheet S101 and Sheet A101. Which Sheet is correct?
For the correct dimensions of the column grid, please refer to revised Sheet S101, included with Addendum #1.
- N. What material is intended above the storefront entrance framing? Detail C3/A502 shows exterior gypsum board. Is there an additional material at this location?
Brick veneer is to be included above SF-1, SF-2, and SF-4 (See Section F8/A201). Please see revised Detail C3/A502, included with this addendum.

End of Addendum No. One

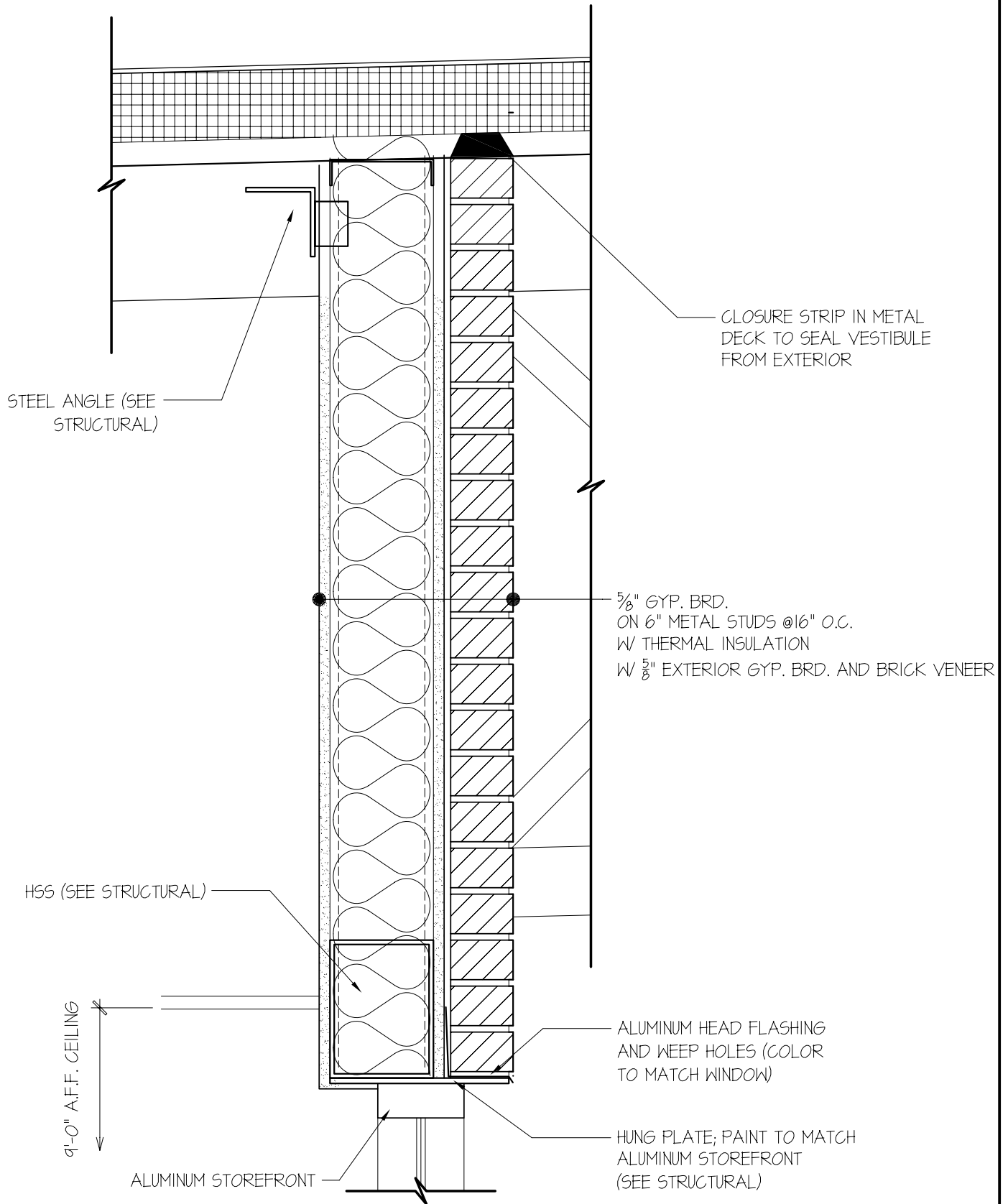
This addendum consists of 4 pages and 4 full size replacement Drawing Sheets



A7
A121

SUBJECT: ROOF PLAN (A7/A121) - ADDENDUM #1
 PROJECT: GREENVIEW KNOLLS ES
 DATE: 05.06.09
 JOB NO: 28101.08
 SCALE: 1/8" = 1'-0"

WGM
 ARCHITECTURE + INTERIORS
 WHEELER GOODMAN MASEK
 ONE ANNAPOLIS STREET #100
 ANNAPOLIS MARYLAND 21401
 V. 410.841.6787
 F. 410.841.5523
 www.wgm-arch.com



C3
A502

SUBJECT: SECTION DETAIL AT ENTRANCE
STOREFRONT (C3/A502) - ADDENDUM #1
PROJECT: GREENVIEW KNOLLS ES
DATE: 05.06.09
JOB NO: 28101.08

SCALE: 1 1/2" = 1'-0"

WGM WHEELER GOODMAN MASEK
ONE ANNAPOLIS STREET #100
ANNAPOLIS MARYLAND 21401
V. 410.841.6787
F. 410.841.5523
www.wgm-arch.com
ARCHITECTURE + INTERIORS