

PLUMBING NOTES

- HOLD TOP OF FLOOR DRAINS FLUSH WITH FINISHED FLOOR.
- WATER PIPING ABOVE SLAB SHALL BE TYPE L HARD TEMPER COPPER. WATER PIPING UNDER SLAB SHALL BE TYPE K SOFT TEMPER COPPER.
- WASTE AND VENT PIPING MAY BE SCHEDULE 40, TYPE 1 GRADE 1 PVC.
- ENSURE VENT PIPING PASSING THROUGH ROOF IS COMPATIBLE WITH STRUCTURE AND CORRECTLY FLASHED TO PREVENT ROOF LEAKAGE.
- PROVIDE 1" INSULATION FOR COLD AND HOT WATER ABOVE GRADE OR SLAB AND RUNNING IN WALLS.
- PROVIDE CONDENSATE PIPING AS REQUIRED. INSULATE CONDENSATE PIPING WHERE SWEATING CAN CAUSE STAINS ON THE CEILING BELOW. ROUTE COND. LINE TO NEAREST DRAIN.
- PROVIDE TRAP PRIMERS FOR FLOOR DRAINS OR OTHER FIXTURES WHERE INDICATED OR REQUIRED.
- VERIFY SERVICE CONNECTIONS AND METERING LOCATIONS WITH LOCAL UTILITIES. VERIFY SEWER INVERT AT CONNECTION POINT TO DETERMINE DEPTH OF HIGHEST PLUMBING FIXTURE.
- EQUIPMENT ROUGH-IN LOCATIONS ARE ACCURATE TO THE BEST OF KNOWLEDGE AVAILABLE AT THE TIME OF DESIGN. IN THE EVENT OF SUBSTITUTION OF EQUIPMENT OR DEVIATION FROM THESE PLANS, THE CONTRACTOR SHALL ENSURE THE PROPOSED CHANGE PROVIDES A COMPLETE, WORKING SYSTEM.
- ALL PLUMBING WORK SHALL MEET APPLICABLE STATE AND LOCAL CODES.
- GAS PIPING SHALL BE INSTALLED IN COMPLIANCE WITH THE GAS COMPANY'S REQUIREMENTS. PIPE SHALL BE SCHEDULE 40 BLACK STEEL, ASTM SPEC. A-120. JOINTS IN PIPE 2" AND UNDER SHALL BE THREADED. USE 150 PSI MALLEABLE IRON FITTINGS.

PLUMBING FIXTURE SCHEDULE

ITEM NO.	DESCRIPTION	PIPE SIZES				MANUFACTURER & MODEL NUMBER*
		COLD	HOT	WASTE	VENT	
P-1	Water closet, 1.4 GPF, pressure assist	1/2"	-	4"	2"	Kohler #K-3505 w/ K-4650 Seat
P-2	Water closet, handicap, pressure assist	1/2"	-	4"	2"	Kohler #K-3493 w/K-4650 Seat
P-3	Urinal, 1.0 GPF, water saver	3/4"	-	2"	1 1/2"	Kohler #K-4960-ET w/Sloan #186-1 Valve
P-4	Lavatory, self-rim, 20"x17"	1/2"	1/2"	1 1/4"	1 1/2"	Kohler #K-2196-4 w/K-8202-K & K-16070-4A Faucet (15582-F Center Set Single Lever)
P-5	Hand sink, wall hung, 22"x19"	1/2"	1/2"	1 1/4"	1 1/2"	Kohler #K-2703 w/K-8040-2A Shelf-back Faucet
P-6	Mop sink, neo-angle, 24"x24"	1/2"	1/2"	2"	1 1/2"	Florestone # 85 w/Chicago Faucet #897-RCF Mop Faucet
P-7	2 Compartment Kitchen Sink	1/2"	1/2"	1-1/2"	1 1/2"	Existing
P-8	3 Compartment Kitchen Sink	1/2"	1/2"	1-1/2"	1 1/2"	Existing
P-9	Kitchen sink, single bowl, 20"x20"	1/2"	1/2"	1-1/2"	1 1/2"	Kohler #K-3382
WH	Water Heater	1-1/4"	1-1/4"	---	---	A. O. Smith BTN-100, 90 MBH Gas, 1/2" Gas inlet, 3" Flue, 66" high, 30" dia.
FD	Floor Drain	---	---	4"	**	Jay R. Smith 2005-B-D w/PPS Trap Primer
CO	Clean Out	---	---	Line	---	Jay R. Smith 4040 Series w/Square Top
FS	Floor Sink w/half-grate	---	---	4"	1-1/2"	Josam #49503-4
OSD	Open Site Drain	---	---	3"	---	Josam #30003-50

LP GAS PIPING NOTES

- ALL PIPING, VALVES, AND CONNECTIONS INDICATED SHALL BE IN ACCORDANCE WITH ALL APPLICABLE LOCAL CODES, ORDINANCES, AND REGULATIONS AND SHALL BE APPROVED BY THE UTILITY SUPPLIER.
- ALL EQUIPMENT SHALL BE PROVIDED AND INSTALLED COMPLETE WITH ALL REG. PRESSURE REGULATING, FLOW, AND CONTROL VALVES.
- ALL PIPE SIZES, BETWEEN REGULATOR AND EQUIPMENT, ARE BASED ON A PRESSURE DROP OF 0.3" WC AND GAS WITH A 1.52 SPECIFIC GRAVITY. ALL PIPE SIZES BETWEEN THE METER AND THE GAS REGULATOR ARE BASED ON 2 PSI SUPPLY PRESSURE WITH A PRESSURE DROP OF 10%.
- CONNECTIONS TO THE FOLLOWING EQUIPMENT SHALL BE MADE WITH FLEXIBLE HOSE CONNECTORS 6'-0" IN LENGTH: ALL GAS-FIRED COOKING EQUIPMENT.
- SEE FIXTURE DRAWINGS FOR EXACT LOCATION OF ALL COOKING EQUIPMENT.
- NOT USED.
- BRANCH PIPING SHALL BE TAKEN FROM THE TOP OF THE MAIN.
- MARK ALL GAS PIPING WITH ANSI A:13.1 - 1981 COLOR IDENTIFICATION FOR METALLIC PIPE.
- INSTALLATION SHALL BE IN COMPLIANCE W/ NFPA 54, NATIONAL FUEL GAS CODE ANSI Z223.1-1992.
- ALL REGULATORS PIPED TO THE OUTSIDE SHALL RUN @ A MIN. OF CONNECTION SIZES FROM REGULATOR UP TO VENT. ALSO PROVIDE BUG SCREEN ON ELBOWS LOOKING DOWN.
- VALVES FOR NATURAL GAS SHALL BE AGA RATED.
- PIPING PRESSURE TESTS SHALL BE WITNESSED BY LOCAL AUTHORITIES.
- ADJUST ALL REGULATORS TO PROVIDE SCHEDULED LOW PRESSURE AT THE SCHEDULED FLOW.
- ALL PIPING SHALL CONFORM TO THE REQUIREMENTS OF NFPA 54, 2.6.2 FOR METALLIC PIPE.
- ALL FITTINGS SHALL CONFORM TO THE REQUIREMENTS OF NFPA 54, 2.6.8 FOR METALLIC PIPING JOINTS & FITTINGS.
- ALL FITTINGS SHALL CONFORM TO THE REQUIREMENTS OF NFPA 54, 2.6.8 FOR METALLIC PIPING JOINTS & FITTINGS.
- AUTOMATIC FUEL SHUT-OFF VALVE ON COOKING EQUIPMENT SHALL BE IN COMPLIANCE WITH BOCA M-507.0.
- TYPE OF PIPE SUPPORT & SUPPORT SPACING FOR GAS PIPING SHALL BE IN COMPLIANCE W/ NFPA 54.

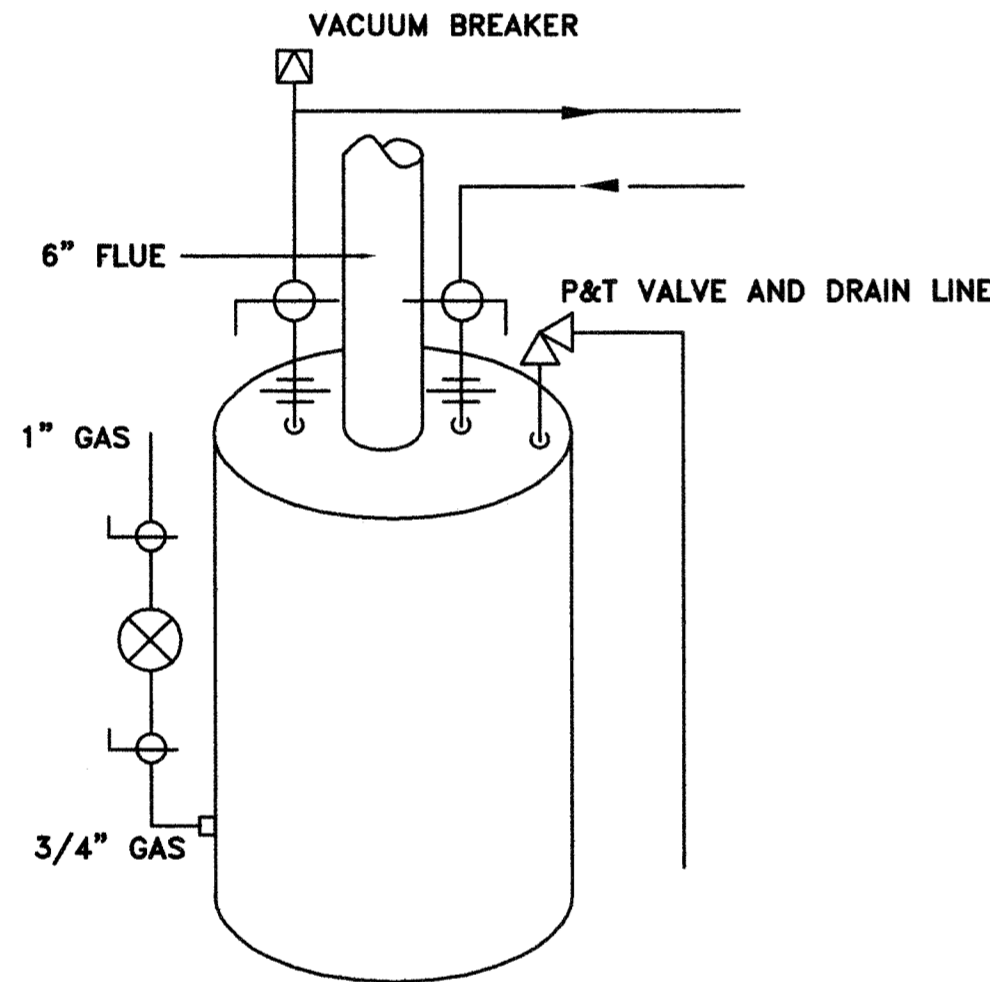
LP GAS EQUIPMENT SCHEDULE

ITEM No.	EQUIPMENT	INPUT (CFH)	INPUT (MBH)	COMMENTS
2	STOVE/OVEN	282.0		COOKING EQUIP.
3	FRYER	45.0		
4B	AHU	75.0		HVAC
5	AHU	114.0		
RTU	RTU	96.0		
WH	WATER HEATER	90.0		WATER HEATING
TOTAL LOAD		702.0		

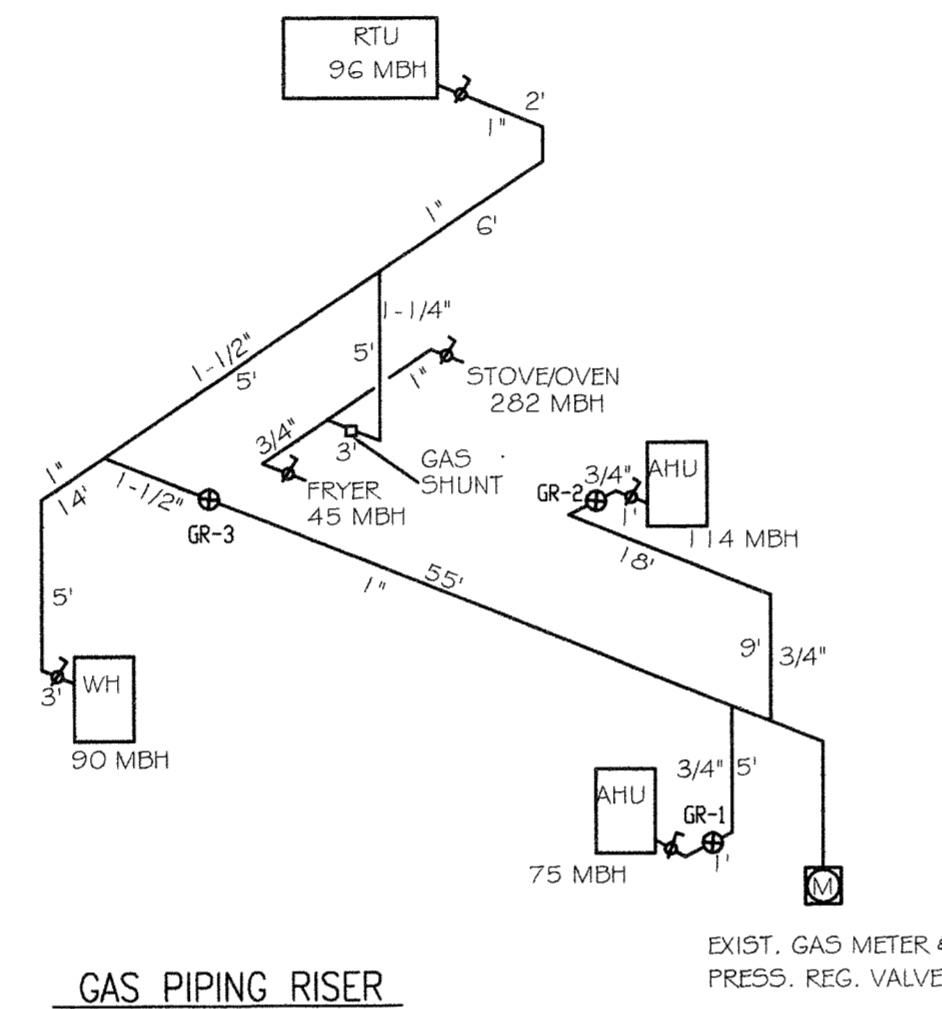
LP GAS PRESSURE REGULATOR SCHEDULE

SYMBOL	CAPACITY (MBH)	PRESSURE IN (PSI)	PRESSURE OUT INCHES IN WATER COL.	EQUIPMENT SERVED	LONGEST (LPG) RUN
GR-1	75.0	2	11 TO 14	AHU	7'
GR-2	114.0	2	11 TO 14	AHU	27'
GR-3	513.0	2	11 TO 14	RTU, WH, STOVE, FRYER	14'

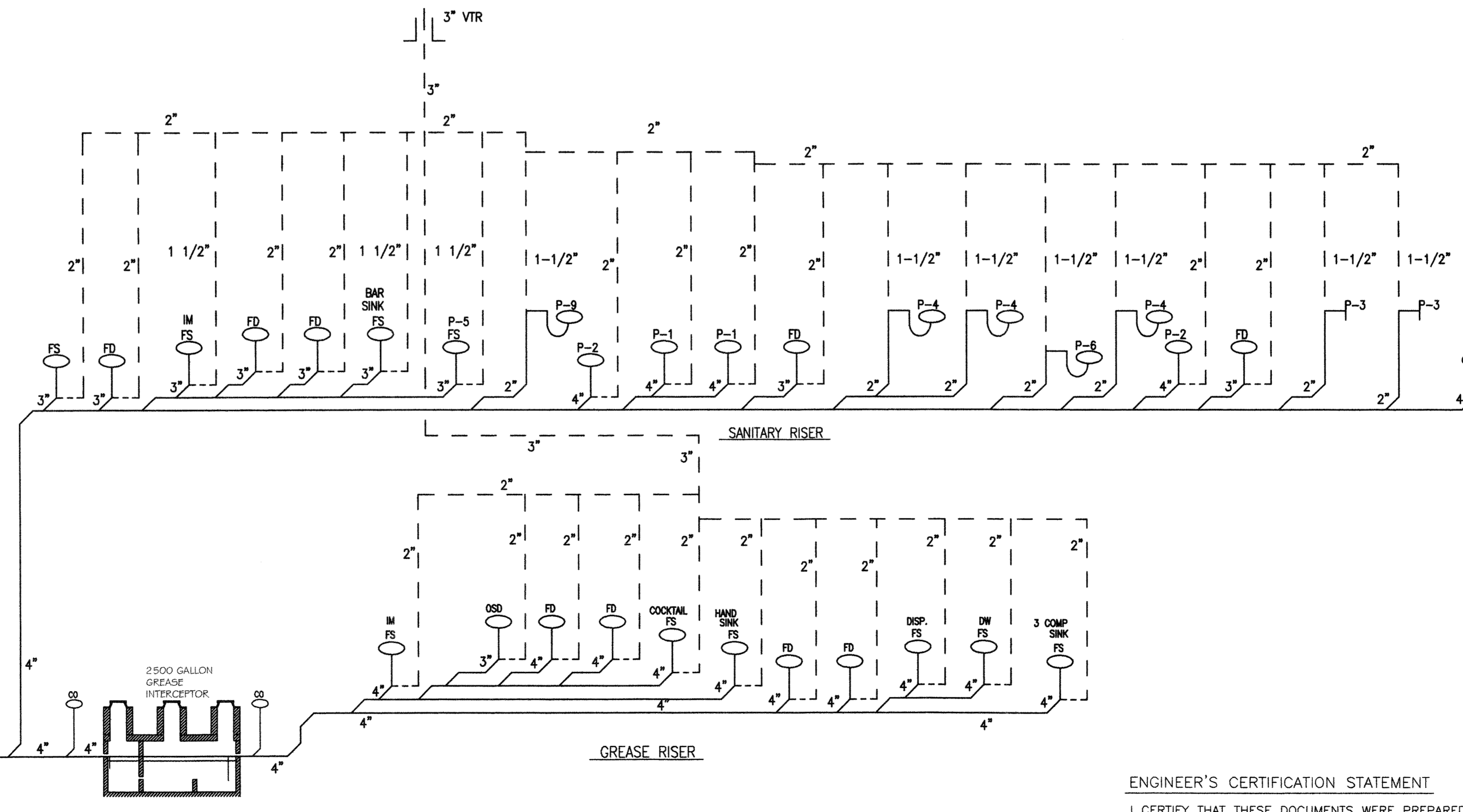
LONGEST MPG RUN 30'-0" TO REG. GR-2
NOTE: 1. ALL REGULATORS TO BE VENTED TO OUTSIDE & TERMINATE DOWNWARD w/ BUG SCREEN. TERMINATION SHALL BE 18" ABOVE ROOF & 10' MIN FROM AIR INTAKES.
2. PROVIDE GAS COCK BEFORE EACH REG. & UNION @ REG. DISCHARGE & VENT CONN.



WATER HEATER CONNECTION DETAIL
NO SCALE



GAS PIPING RISER



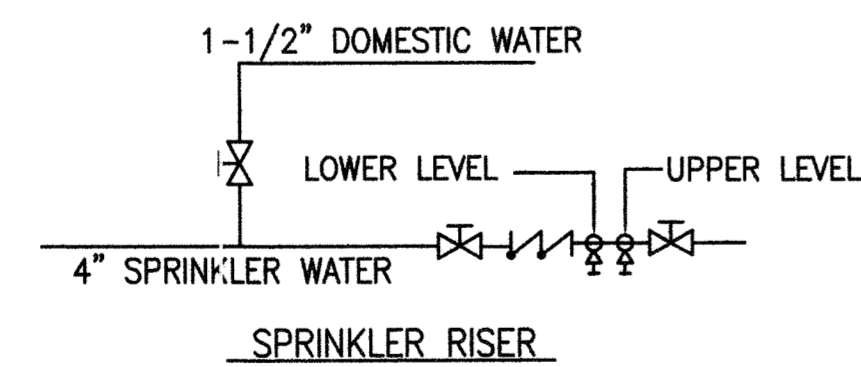
TO NEW GRINDER PUMP REFER TO CIVIL SITE PLAN FOR CONTINUATION

ENGINEER'S CERTIFICATION STATEMENT

I CERTIFY THAT THESE DOCUMENTS WERE PREPARED OR APPROVED BY ME, AND THAT I AM A DULY LICENSED ENGINEER UNDER THE LAWS OF THE STATE OF MARYLAND. LICENSE NO. 16927, EXPIRATION DATE MAY 12, 2010.

LEGEND

	COLD WATER
	HOT WATER
	VENT
	SANITARY
	GAS
	BALL VALVE
	UNION
	GATE VALVE
	VALVE IN RISE



SPRINKLER RISER

MATERIALS KEYNOTES

REVISIONS/SUBMISSIONS _____ Date _____

LEWIS ENGINEERING ASSOCIATES, INC
MECHANICAL and ELECTRICAL ENGINEERS
28841 RIVERWATCH DRIVE, MECHANICSVILLE, MD 20859
PHONE (301) 884-3370 FAX (301) 884-2654 EMAIL lewiseng.net

Patuxent Architects
P.O. Box 421 Prince Frederick, Maryland 20678 TEL 410-257-9298 FAX 410-535-4127

Solomons Yacht Club
Solomons Island, MD

Drawing Title **PLUMBING RISERS AND DETAILS**

Seal	Designed BL	Project No.
Drawn BL	Checked BL	Scale NOTED
Reviewed BL	Reviewed BL	Drawing No. P-3
Date MAR. 24, 2009		3 of 3