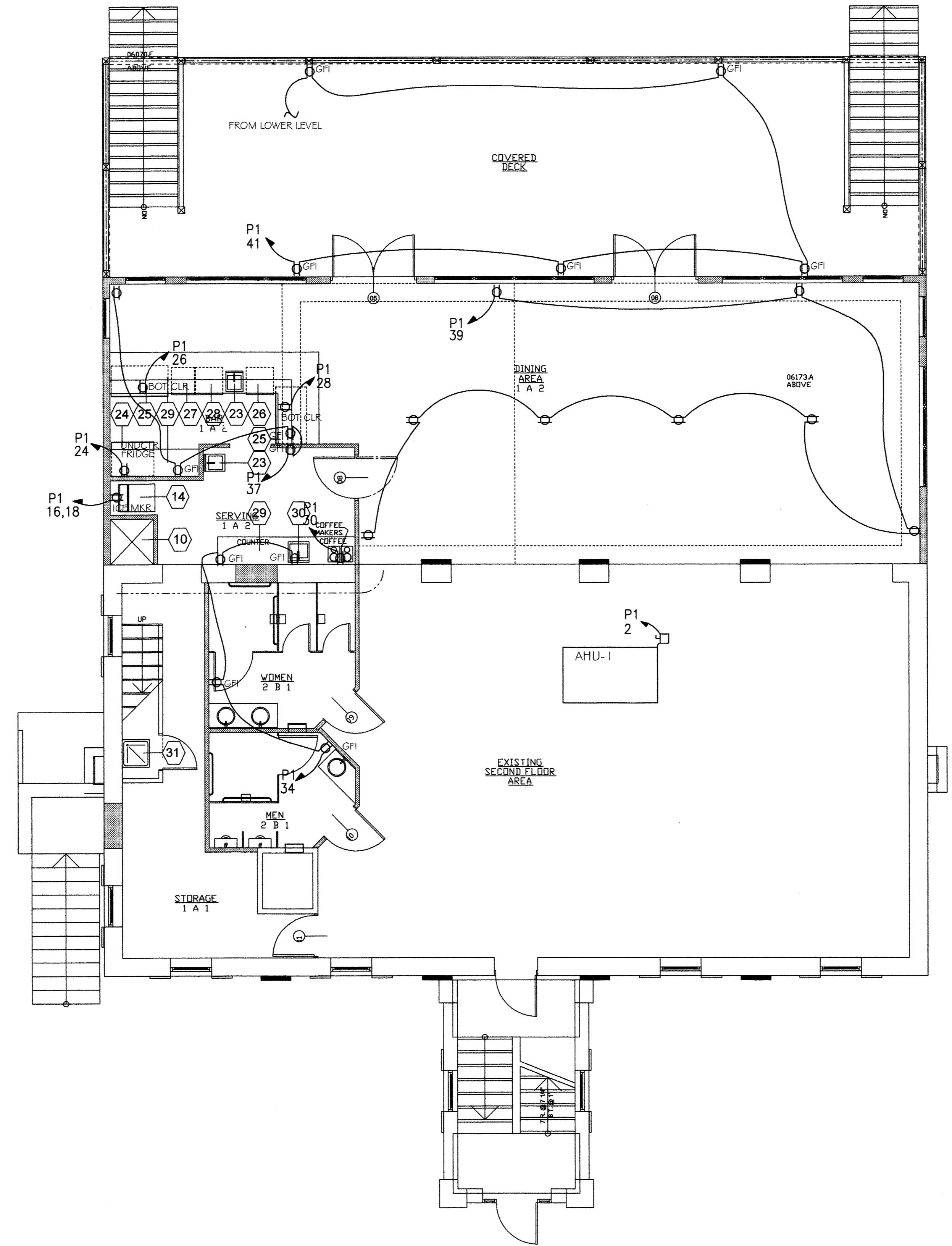


1 2 3 4 5 6 7 8 9 10 11 12 13 14 15 16

P  
O  
Z  
M  
F  
K  
C  
H  
I  
G  
T  
E  
D  
C  
B  
A



**UPPER LEVEL POWER PLAN**  
SCALE: 3/16" = 1'-0"

**ENGINEER'S CERTIFICATION STATEMENT**

I CERTIFY THAT THESE DOCUMENTS WERE PREPARED OR APPROVED BY ME, AND THAT I AM A DULY LICENSED ENGINEER UNDER THE LAWS OF THE STATE OF MARYLAND. LICENSE NO. 16927, EXPIRATION DATE MAY 12, 2010.

MATERIALS KEYNOTES

REVISIONS/SUBMISSIONS Date

**LEWIS ENGINEERING ASSOCIATES, INC**  
**MECHANICAL and ELECTRICAL ENGINEERS**  
28841 RIVERWATCH DRIVE, MECHANICSVILLE, MD 20859  
PHONE (301) 884-3370 FAX (301) 884-2654 EMAIL lewiseng.net

**Patuxent Architects**

P.O. Box 421 Prince Frederick, Maryland 20678 TEL 410-257-9298 FAX 410-535-4127

**Solomons Yacht Club**  
Solomons Island, MD

Drawing Title  
**1ST FLOOR POWER PLAN**

Seal	Designed BL	Project No.
	Drawn NL	Scale 3/16" = 1'-0"
	Checked BL	Drawing No.
	Reviewed BL	<b>E-2</b>
	Date MAR. 24, 2009	2 of 5

1 2 3 4 5 6 7 8 9 10 11 12 13 14 15 16