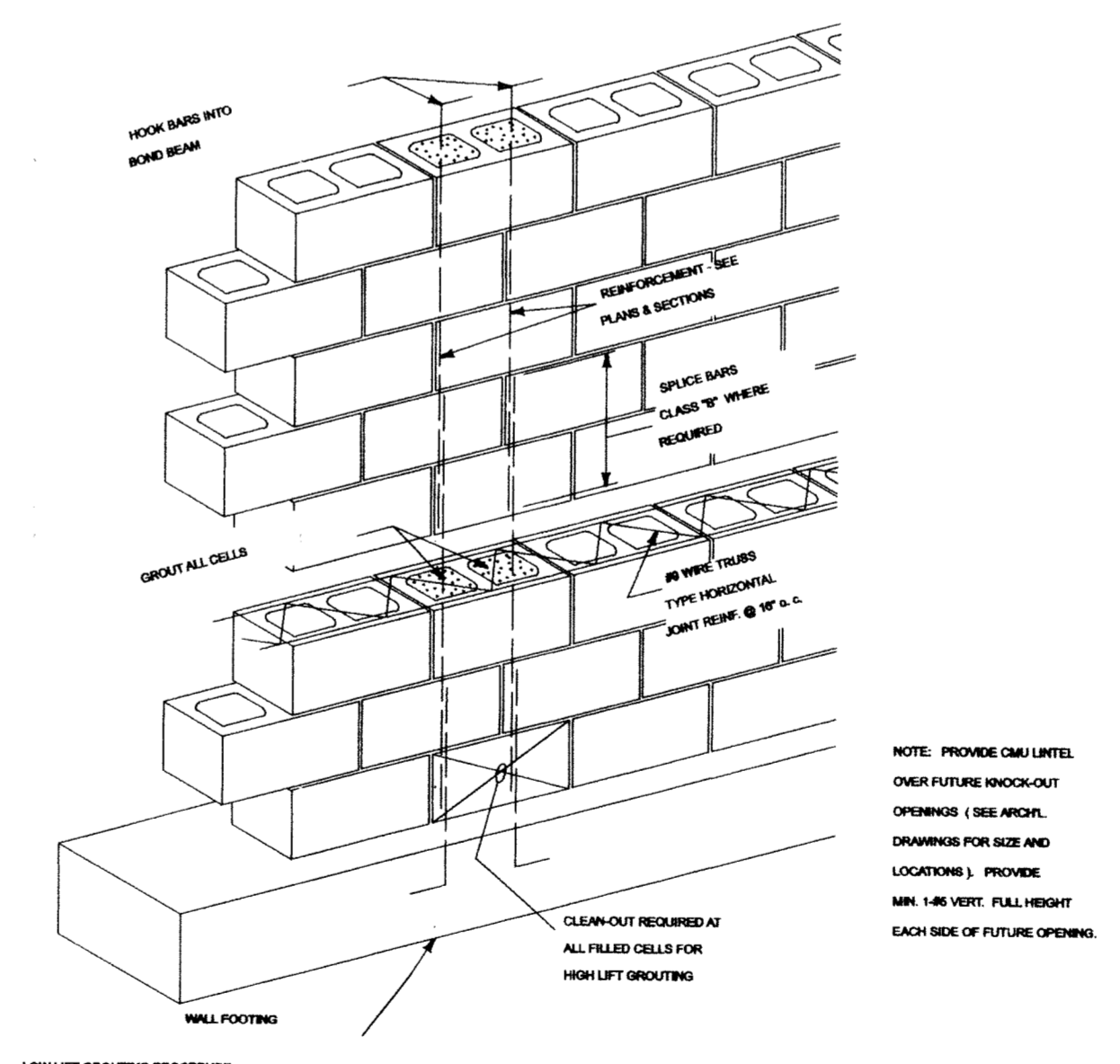


TENSION LAP SPlice LENGTHS

TABLE 1

BAR SIZE	F _y = 3000 psi				F _y = 4000 psi			
	TOP BARS	UTILEM BARS	TOP BARS	UTILEM BARS	TOP BARS	UTILEM BARS	TOP BARS	UTILEM BARS
#3	18	21	13	16	14	16	12	16
#4	22	26	17	22	19	24	15	19
#5	27	32	21	27	23	30	18	23
#6	36	42	28	36	31	40	22	28
#7	44	53	35	44	38	50	28	35
#8	54	64	43	54	46	60	34	43
#9	63	75	51	63	54	70	40	51
#10	72	87	60	72	63	80	48	60
#11	81	99	69	81	72	90	56	69

- NOTES:
- CONCRETE NORMAL WEIGHT F_y = 4000 PSI
 - BARS NOT EPOXY COATED
 - USE THIS TABLE FOR BEAM COLUMN AND BARS ON INNER LAYERS OF WALLS
 - TENSION DEVELOPMENT LENGTH L_d CLASS "C" LAP SPLICE



- LOW LIFT GRouting PROCEDURE:
- CONSTRUCT WALL TO HEIGHT OF 4'-0". ALLOW MASONRY TO SET SUFFICIENTLY TO WITHSTAND GRout PRESSURE.
 - INSPECT UNITS FOR ALIGNMENT. CLEAN OUT CELLS TO BE FILLED.
 - FILL CELLS TO 1" BELOW TOP COURSE.
 - DELAY 3 TO 5 MINUTES FROM TO CONSOLIDATING TO ALLOW WATER TO BE ABSORBED BY MASONRY.
- HIGH LIFT GRouting PROCEDURE:
- CONSTRUCT WALL TO FULL HEIGHT (OR FEET MAXIMUM). ALLOW MASONRY TO CURE AT LEAST 1 DAYS.
 - CLEAN CELLS, WHICH ARE TO BE GRouted, THROUGH CLEAN OUT PORTS.
 - PLACE GRout IN A FOOT LIFTS AND CONSOLIDATE AFTER EXCESS MOISTURE HAS BEEN ABSORBED BY MASONRY.
 - PLACE THE NEXT LIFT AS SOON AS POSSIBLE BUT NO LONGER THAN ONE HOUR LATER.

MATERIALS KEYNOTES

DIVISION 3 CONCRETE
 03300.B 12" x 24" Continuous conc. fig. w/3-#4 st. rebar.
 03300.C 12" x 12" x 24" conc. fig.
 03300.H 4" conc. Slab w/ 6#6 10/10 w/cm on 4 mil Vapor barrier on 4" gravel base
 03300.J Thickness Slab to 8" deep and 16" wide
 03300.L 1/2" Expansion joint.
 03300.M 48" x 48" x 12" Conc Fig.

DIVISION 4 MASONRY
 04050.A Fabric flashing w/ weeps @ 32" o.c.
 04220.C 8" CMU w/ horizontal st. reinf. every other course.
 04220.D 12" CMU w/ horizontal st. reinf. e.o.c.
 04810.A 4" Brick veneer.
 04810.B Brick rowlock cap.
 04810.C Brick soldier course.
 04820.A 4" x 8" Reinf. conc. lintel.

DIVISION 5 METALS
 05120.A W825 W/ Hung Plate
 05120.B W8 X 18
 05120.J 3" Steel column.
 05120.K 3" x 4" x 3/8" Steel angle.
 05520.A 32KS-36-Joists-@-24'-O.C.-
 05520.A Powder Coated Aluminum Railing @ 42" A.F.F.

DIVISION 6 WOOD, PLASTICS AND COMPOSITES
 06070.C 2x6 Pressure Treated
 06070.D 2x12 Pressure Treated
 06070.E 2X12 Pressure Treated Joists @ 16" O.C.
 06070.F (3) 2x12 Pressure Treated Beam
 06070.G 4X4 Pressure Treated
 06070.H 6X6 Pressure Treated
 06070.I 5/4 X 6 Pressure Treated
 06070.J 2x6 Pressure Treated Plate anchored at 48" o.c.
 06070.K P.T. Wood Railings @ 36" A.F.F.
 06070.L P.T. Prefabricated Stairs
 06070.M P.T. 1 x
 06090.A 1/2" Dia. Anchor bolts.
 06090.B Galv. Steel joists hanger.
 06100.A 2 x 4 Wood studs @ 16" o.c.
 06100.B 2 x 6 wood studs @ 16" o.c. w/12" wood sheathing & house wrap.
 06100.C 2 x 4
 06100.D 2 x 6
 06100.E 2 x 8
 06100.F 2 x 10
 06100.G 2 x 12
 06100.H (3) 2 x 10 Header.
 06100.K 4 x 4
 06100.L 6 x 6
 06100.R 2 x 6 Clad rake board.
 06100.S 2 x 6 Clad fascia board.
 06100.T 2 x 6 ceiling joists @ 24" o.c.
 06100.U 2 x 12 Rafter @ 24" o.c.
 06100.X 2 x 12 Floor joists @ 16" o.c. w/ 1/2" plywd
 06150.A 3/4" T&G Plywood subfloor
 06160.A 1/2" wood sheathing
 06160.B 5/8" wood sheathing
 06173.A 24" Wood Trusses @ 24" O.C. w/ 5/8" wd sheathing
 06173.B Pre-engineered Roof trusses @ 24" o.c. w/ 5/8" wd sheathing
 06173.C Pre-engineered mono trusses @ 24" o.c. w/ 5/8" wd sheathing
 06173.D Pre-Engineered Hip Truss
 06173.E Rim Joist
 06176.B 11 3/4" LPI wood joists @ 16" o.c. w/ 1/2" plywd
 06180.B (3) 1 3/4" 14" LVL.
 06430.A Prefabricated pine stairs.
 06430.B Wood railings @ 42" AFF.

DIVISION 7 THERMAL AND MOISTURE PROTECTION
 07110.A 4 Mil. vapor barrier w/ gravel ballast.
 07120.A Bituminous isolant w/ 5 mil VB below grade
 07160.A Cementitious parging
 07185.A 60 mil DuraDeck or Deking
 07212.B R-19 (6") fiberglass batt insulation.
 07212.E R-38 (12") fiberglass batt insulation.
 07311.A 25 Year Fiberglass shingles on 15# Asphalt Impregnated roofing paper
 07464.A Vinyl siding.
 07464.B Vinyl trim.
 07464.D Vented vinyl soffit.
 07464.E Beaded vinyl soffit.
 07464.F Stucco 3/8" Thick
 07631.A Pre-finished aluminum gutter.
 07631.B Pre-finished aluminum downspouts
 07724.A Continuous ridge vent.

DIVISION 9 FINISHES
 09260.A 1/2" Gypsum Board.
 09260.B 1/2" Gypsum waterproof "green board."
 09511.A Suspended ceiling system.

A-1 STRUCTURAL DETAILS

1/4"=1'-0"